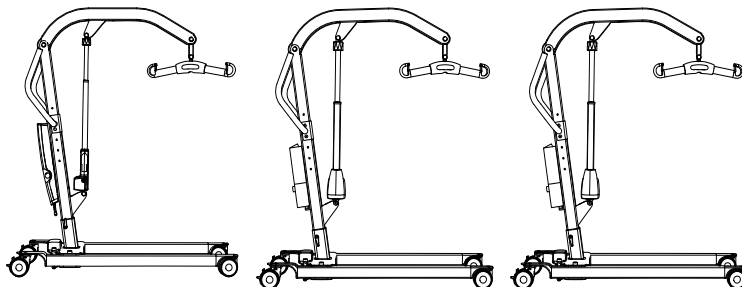


# Eva400/Eva450/Eva600

SystemRoMedic™

SWL: 180 kg/400 lbs  
205 kg/450 lbs  
270 kg/600 lbs



Eva400EE/EM

Eva450EE

Eva600EE

REF

Eva400EE: 60100001

Eva400EM: 60400011

Eva450EE: 60100002

Eva450EE, low legs: 60100006

Eva600EE: 60100003

Eva600EE, low legs: 60100010



## Safety information

### Visual inspection

Inspect lift functions regularly. Check to ensure that material is free from damage.

### Before use

Make certain the lift is properly assembled.

Check sling bar connection and safety latch function.

Check lifting function and base-width adjustment.

Check to ensure that the quick-connecting locking pin for the actuator is correctly installed.



## Always read the user manual

Always read the user manuals for all assistive devices used during a transfer.

Keep the user manual where it is accessible to users of the product.

Always make sure that you have the right version of the user manual.

The most recent editions of user manuals are available for downloading from our website, [www.directhealthcaregroup.com](http://www.directhealthcaregroup.com)

Under no circumstances may the lift be used by persons who have not received instruction in the operation of the lift.

It is strongly prohibited to modify the original product.

**Direct Healthcare  
Group**

Advancing Movement & Health

# Table of contents

## Assembly

Final inspection .....	3
------------------------	---

## Using the product

Important information .....	4
-----------------------------	---

Trouble-shooting .....	4
------------------------	---

Spare parts .....	5-10
-------------------	------

Changing Spare parts .....	9-10
----------------------------	------

Exploded view .....	11-17
---------------------	-------

Periodic inspection - protocol .....	18-22
--------------------------------------	-------

Description of periodic inspektion .....	20
--	----

Periodic inspection - instruction .....	21-22
---	-------

Maintenance .....	23
-------------------	----

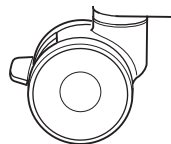
Symbols .....	24
---------------	----

Technical information .....	25
-----------------------------	----

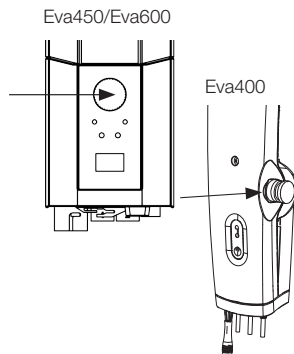
Dimensions .....	26-28
------------------	-------

## Final inspection

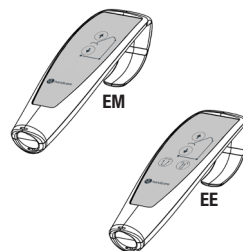
Check to ensure that no parts have been left in the packaging.  
Inspect the lift for signs of wear and damage.  
Check all four castor wheels and castor wheel locks.  
Check all connections and fixtures including screws and bolts.



Check the emergency stop function by activating the emergency stop button, and then pressing either the up or down button. If nothing happens when the up or down buttons are pressed, the emergency stop is functioning properly.



Grasp the hand control, press the up button and run the lift arm all the way up. Then, press the down button and run the lift arm all the way down.  
Test base-width adjustment function. Press the button for base-width adjustment to widen the base fully, and then press the other button to narrow the base again.



Test lift function by lifting a person (not a user) using an approved sling. At the same time, check the emergency lowering function with someone on the lift. See section on Emergency lowering.

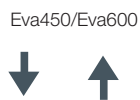
If the lift is functioning correctly, connect the charger and check to ensure that the charging lamp on the control box lights up.

### NOTE!

Before the lift is used for the first time:

- it must be charged for at least 4 hours. See section on charging batteries.
- the control box service counter needs to be reset. To reset the service counters press both lift buttons on the hand control at the same time for 5 seconds. An audio signal will indicate that the timer has been reset.

Keep the user manual where it is accessible to users of the product.





# Using the product



## Important Information

---

- The lift must be assembled according to the instructions provided by Direct Healthcare Group.
- The lift may only be used indoors and on a level floor.
- When lifting from the floor the rear wheels must always be locked to prevent the lift from rolling and colliding with the user. Otherwise, the wheels should not be locked, so that the lift can align itself with the user's centre of gravity.
- Lifting accessories must be properly fitted and tested in relation to the user's needs and functional ability.
- Do not leave the user unattended during a transfer situation. 
- Under no circumstances may max. load be exceeded. See section on Safe working load.
- Never move the lift by pulling on the actuator! 
- The lift must not be used or immersed in or under water including showering.
- The lift should not be left / stored in a high humidity environment.
- The lift must not be charged in a wet room.
- To ensure optimal function, the lift must be inspected regularly. See section on Maintenance.
- Warranty applies only if repairs or alterations are made to the product by personnel who are authorized by Direct Healthcare Group.
- Using lifting accessories other than those approved can entail a risk.
- Verify that all lifting accessories hang vertically and can move freely.

## Trouble-shooting

### **If the lift or base-width adjustment cannot be activated, check the following:**

- That the emergency stop button is not pressed in.
- That all cables are properly and securely connected. Pull out the contact and plug it in again firmly.
- That battery charging is not in progress.
- That the battery is charged.

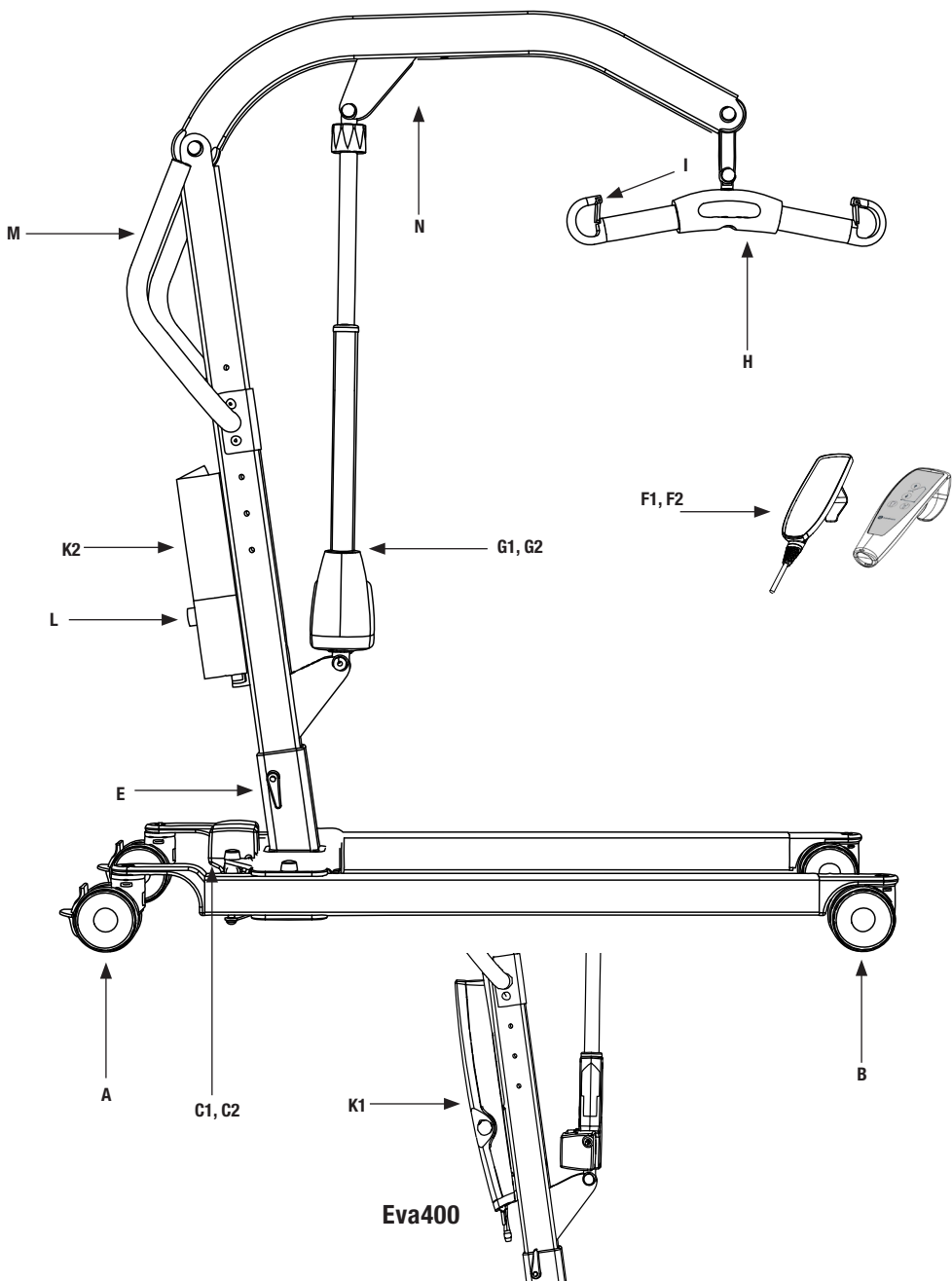
If the lift is not working properly, contact your dealer.

### **If the lift makes unusual noises:**

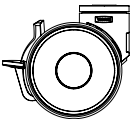


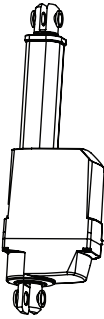
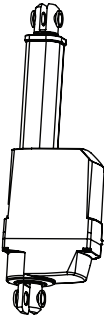

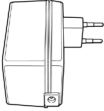
- Try to determine the source of the sound. Take the lift out of operation and contact your dealer.

# Spare parts

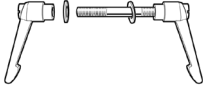
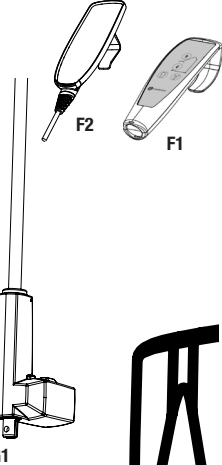
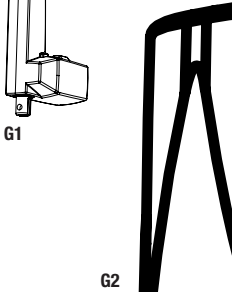
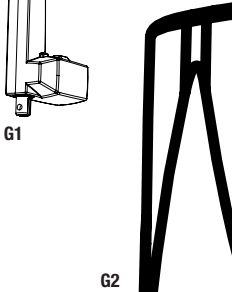

## Description of parts Eva400EE/EM, Eva450EE/EM, Eva600EE



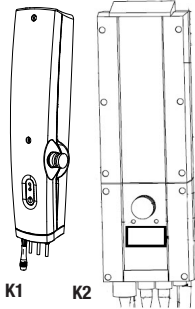
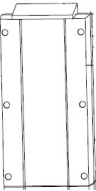
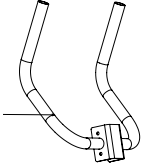
## Spare part list

Pos	Article	Product	Unit	Components	Images
A	80100002	Rear castor 100 mm	1 pce	1 x Rear castor 1 x Locking nut M10	
B	80100001	Front castor 100 mm	1 pce	1 x Front castor 1 x Locking nut M10	
	80100126	Front castor (low legs)	1 pce	1 x Front castor 1 x Locking nut M10	
C1	80100055	Actuator legspreading (400)	1 pce	1 x Actuator 1 x Motor cable for LA23 2 x Locking nut M8 0,25 x Cardboard	
C2	80100056	Actuator legspreading (450/600)	1 set	1 x Actuator 1 x Linak LA23 phone cable 2 x Locking nut M8 0,25 x Cardboard	
D1	80100048	Cable for charger EU (450/600)	1 pce	1 x Charger	
	80100045	Cable for charger US (450/600)	1 pce	1 x Charger	
	80100046	Cable for charger UK (450/600)	1 pce	1 x Charger	
	80100047	Cable for charger AUS (450/600)	1 pce	1 x Charger	
D2	80100052	Charger EU (400)	1 pce	1 x Charger	
	80100060	Charger US(400)	1 pce	1 x Charger	
	80100059	Charger UK (400)	1 pce	1 x Charger	
	80100061	Charger AUS (400)	1 pce	1 x Charger	

## Spare part list

Pos	Article	Product	Unit	Components	Images
E	80100032	Lever	1 set	2 x Lever 1 x Threaded rod M10x95 2 x Washer 10,5x20x2	
F1	80100044	Hand control 4-buttons (450/600)	1 pce	1 x Hand control	
F2	80100062	Hand control 4-buttons Linak CBJH (400EE)	1 pce	1 x Hand control	
F3	80100063	Hand control 2-buttons (400EM)	1 pce	1 x Hand control	
	80100156	Hand control HB32-4	1 pce	1 x Hand control	
	80100130	Hand control tester	1 pce		
G1	80100053	Actuator mast (400)	1 set	1 x Actuator LA31 2 x Locking nut 0,5 x Cardboard	
G2	80100054	Actuator mast (450/600)	1 set	1 x Actuator LA44 2 x Locking nut 0,5 x Cardboard	
I	80100058	Sling bar lock for alu sling bar	1 set	10 x Cargo barrier 20 x Screw M5x12	

## Spare part list

Pos	Article	Product	Unit	Components	Images
K1	80100051	Control box CBJ (400)	1 pce	1 x Control box 0,5 x Cardboard	
K2	80100042	Control box CBJ (450/600)	1 pce	1 x Control box	
	80100153	Control box CBJC (450)	1 pce	1 x Control box	
	80100154	Control box CBJC (600)	1 pce	1 x Control box	
	80100043	Battery Box CBJ (450/600)	1 pce	1 x Battery box	
	80100057	Battery CBJ	1 pair	1 x Battery box 1 x Aircap bag	
M	80100034	Push handlebar	1 pce	1 x Push handlebar handlebar 2 x Locking nut M8 2 x Plug 1 x Cardboard push handles	
	80100103	Reinforced legspread kit (600)	1 set		
	80100118	Cable for actuator (450/600 lowlegs)	1 pce		
	80100119	Mounting plate Linak (450/600 low legs)	1 pce		



## Changing spare parts

### **80100001, -02 Front/rear castor 100 mm**

Using an Allen key, remove the screw that holds the castor in place. Replace the castor, apply Loctite 2701 or similar, and then secure the castor with the screw.

### **80100126 Front castor EML**

Using an Allen key, remove the screw that holds the castor in place. Replace the castor, apply Loctite 2701 or similar, and then secure the castor with the screw.

### **80100055, -56 Actuator leg legspreading**

Connect the motor cable to the actuator.

Run the actuator until the legs are drawn in fully. Activate emergency stop. Disconnect the actuator from the control box. Loosen and remove the screw that holds the actuator to the leg. Remove the screw covers and loosen the screw and nut. Remove the actuator.

Install the new actuator; start by securing the end that is secured to the leg. Use the accompanying lock nut, and then secure the end that is connected to the base of the mobile lift. Use the accompanying lock nut. Replace the screw covers. Connect the actuator to the control box.

### **80100045, -46, -47, -48 Charger**

Connect the charger cable to the control box, and then plug it into a wall socket.

### **80100032 Lever**

Unscrew the old lever and install the new one.

### **80100044, -062, -063, -156 Hand control**

Activate the emergency stop, and then disconnect the hand control. Connect the new hand control.

### **80100130 Hand control tester**

### **80100053, -054 Actuator mast**

Lower the mast to the lowest position. Activate emergency stop. Disconnect the actuator from the control box. Free the upper end of the actuator by first removing the screw covers, and then removing the screws and nuts. Then, free the lower end in the same way. Lift the mast and remove the actuator. Install the new actuator. Start by fitting the lower end, and then lift the mast and fit the upper end. Secure the actuator with the existing screws and the new, accompanying lock nuts. Replace the screw covers and connect the actuator to the control box.

### **80100058 Slingbar lock for slingbar alu**

Remove the screws on either side of the safety latch and remove it. Install the new safety latch and secure it with the two accompanying M5x12 screws. Position the safety latch, so that the bevelled side is facing in towards the lift hook.

## Changing spare parts

### 80100051, -042, -153, -154 Control box

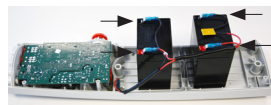
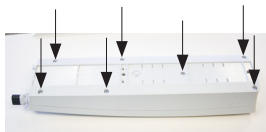
Activate the emergency stop, and then disconnect the actuator and hand control. Remove the battery, loosen the two long screws and remove the control box. Install the new control box and secure it with the two screws. Replace the battery, and then connect the actuator and hand control.

### 80100043, -057 Battery box

Remove the battery by lifting it straight up and out of the holder in the control box. Install the new battery in the holder. Note! The battery must be charged for at least four hours before it is used for the first time.

### 80100057 Battery CBJ (Eva400)

Remove the control box from the mobile lift. Loosen the seven screws on the back of the control box. Open the control box and remove the cords from the two batteries. replace the old batteries with the new ones. Note the battery terminals! Reattach the cords and make sure that all of the cords are inside the casing before the lid is reattached.

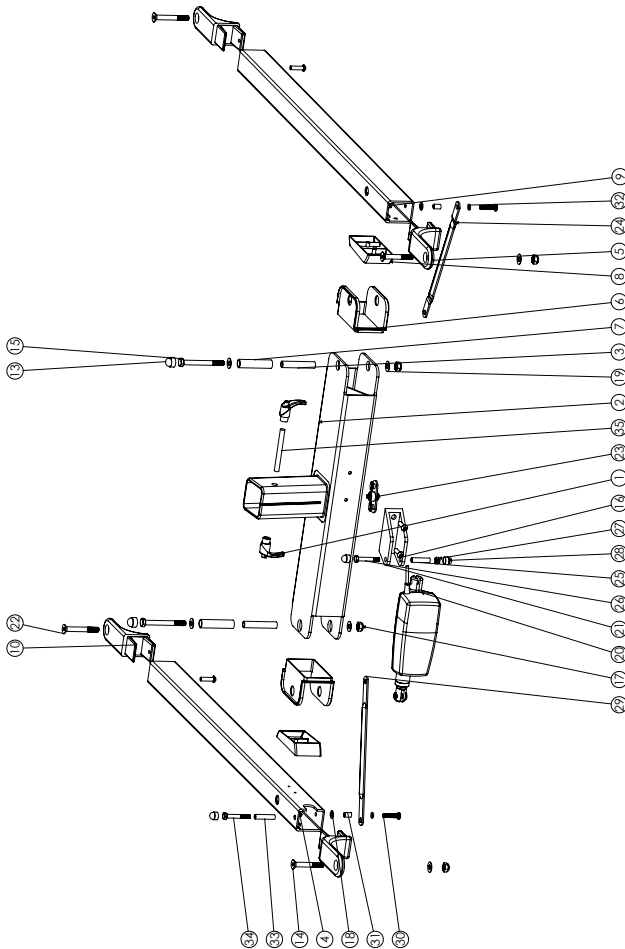


### 80100034 Push handle bar

Loosen the screws on the sides of the push handle bracket. Remove and replace the push handle. Fasten the screws.

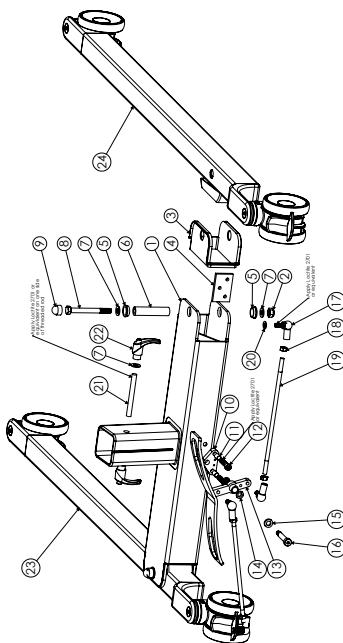
# Exploded view - chassies Eva400EE/Eva450EE

ITEM NO	DOCUMENT NO	DESCRIPTION	QTY.
1	90000329	Locking handle LSS4M10S	2
2	90000633	Center support EE	1
3	90000305	Pivot sleeve outer	2
4	90000632	Leg left LINK	1
5	90000630	Rear fork LINK	2
6	90000285	Leg trim	2
7	90000306	Pivot sleeve inner	2
8	90000287	Leg cap filter	2
9	90000631	Leg right LINK	1
10	90000288	Front fork	2
11	90000259	Front wheel 100mm	2
12	90000260	Rear wheel 100mm	2
13	90000640	Nut cover M5x110	2
14	90000301	Screw M5x DIN997 8.8 M10x70	2
15	90000150	Screw M5x DIN931 8.8 M10x95	2
16	90000152	Screw M5x SD 1580 8.8 M10x95	2
17	90000259	Lock nut DIN968 C16 M10 Z8	4
18	90000345	Washer DIN125-84	4
19	90000361	Washer DIN125-10.5	6
20	90000367	Actuator LA 44	1
21	90000269	Base bracket LINK	1
22	90000794	Screw M5x DIN977 8.8 M10x80	2
23	90000464_5	WashBrk	1
24	90000460	Strut leg sleeve #2	1
25	90000307	Pivot hinge actuator	1
26	90000308	Screw M5x DIN931 8.8 M8x50	1
27	90000206	Lock nut DIN958M8	1
28	90000330	Nut cover M8x8	3
29	90000461	Strut leg sleeve #3	1
30	90000153	Screw M5x SD738018.8 M8x35	2
31	90000672	Sleeve 106x815	2
32	90000740	O Ring 8.3	2
33	90000665	Sleeve 106x845	1
34	90000147	Screw M5x DIN931 8.8 M8x35	1
35	90000400	Threaded steel rod M10x95	1

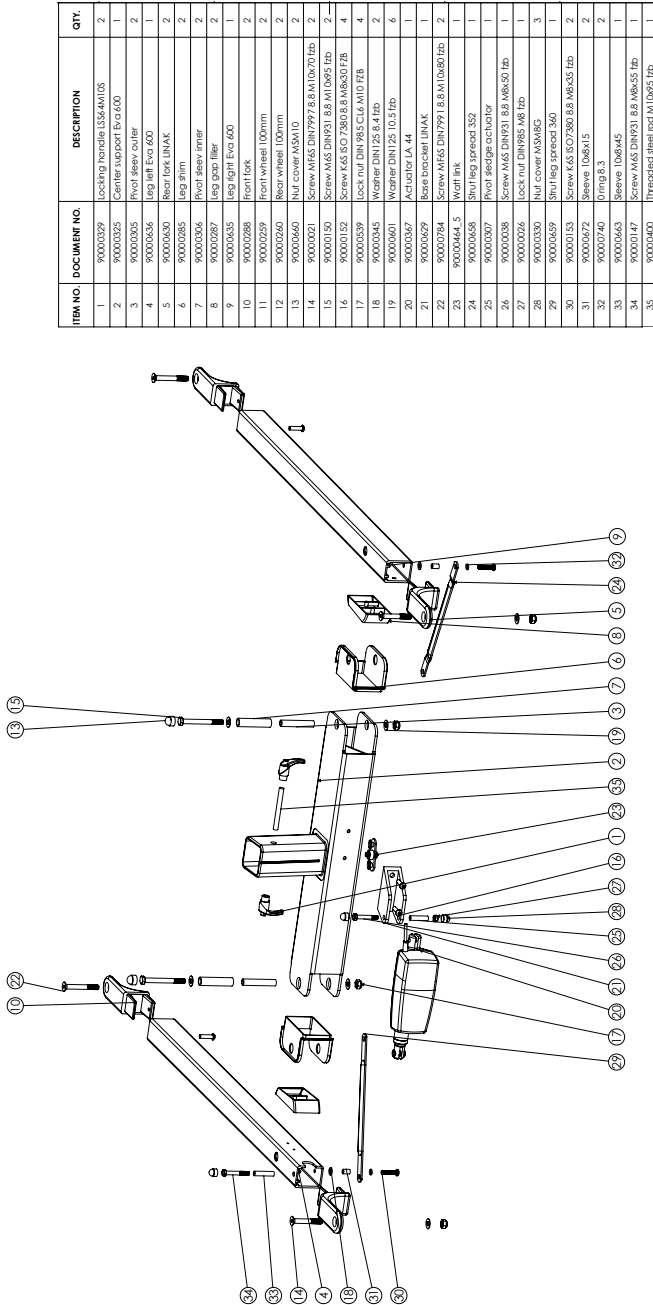


# Exploded view- chassis Eva400EM/Eva450EM

BOM Table			
ITEM NO.	DOC/ITEM NO.	TITLE	QTY.
1	90002000	Center support End	1
2	90003039	Lock nut DIN 985 Cl.6xM10 FB	2
3	90002085	Leg arm	2
4	90002085	Fastening plate	1
5	90002056	Washer flange 18x22x7	4
6	90002057	Pivot sleeve out 75.5x18.1 Lx10	2
7	90002061	Washer DIN 25 10.5x20x2 fzd	6
8	90002150	Screw M6x5 DIN931 8.8 M10x45 fzd	2
9	90002060	Nut cover M5M10	2
10	90001631	Plate pectoral shoulder bolt	1
11	90002072	Sleeve 10x8x15	2
12	90002086	Screw M6x5 DIN912 8.8 M8x40 fzd	2
13	90002098	Pectoral shell	1
14	90002091	Bushing 10x12x6 PA-46	2
15	90002028	Washer PE 10.5x18x4	1
16	90001422	Shoulder bolt ISO2379 12.9 10x8x45	1
17	90002045	Bolt DIN 913 M8	4
18	90002054	Nut M4 DIN934 M8 fzd	4
19	90002099	Threaded sleeve ISO26255 fzd	2
20	90002045	Washer DIN 25.8 Ax10x12 fzd	2
21	90002000	Threaded sleeve M10x95 fzd	1
22	90002029	Locking handle ISO44105	2
23	90002134	Eva400EM leg castm	1
24	90002135	Eva450EM leg castm right	1

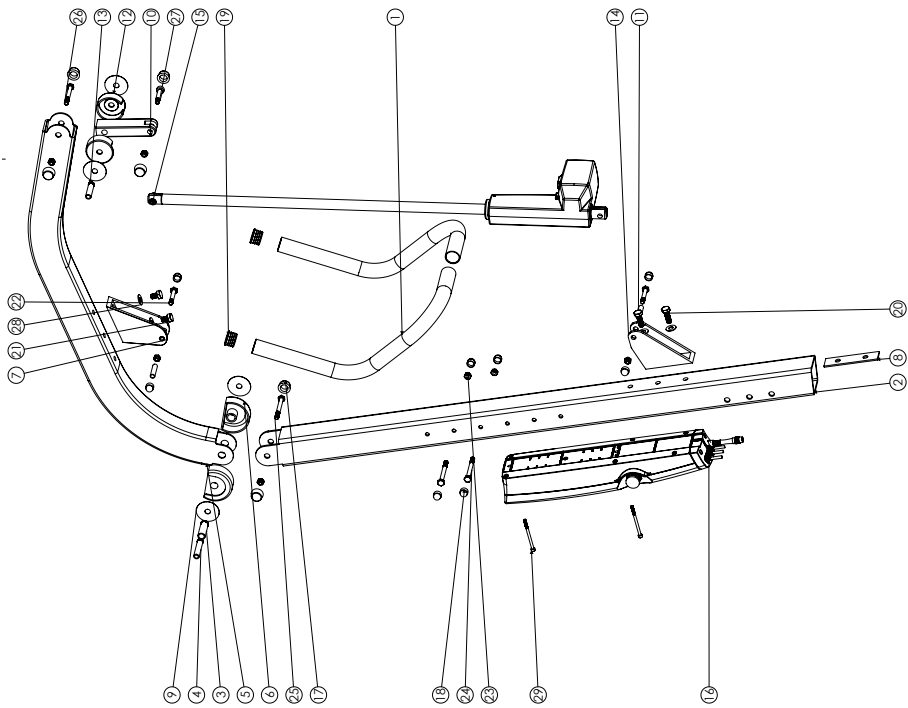


# Exploded view- chassis Eva600EE



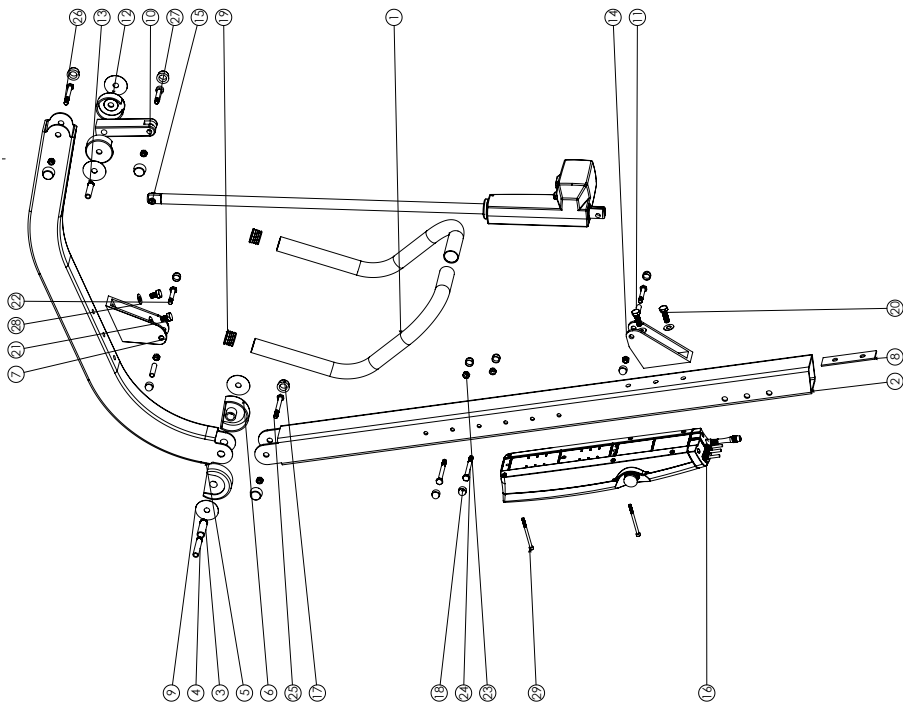
ITEM NO.	DOCUMENT NO.	DESCRIPTION	QTY.
1	90000329	Locking handle LSS4N105	2
2	90000325	Center support Eva600	1
3	90000305	Pivot sleeve outer	2
4	90000436	Leg left Eva 600	1
5	90000430	Rear fork LINAK	2
6	90000285	Leg shim	2
7	90000306	Pivot sleeve inner	2
8	90000287	Leg gap filler	2
9	90000435	Leg right Eva 600	1
10	90000288	Front fork	2
11	90000259	Front wheel 100mm	2
12	90000260	Rear wheel 100mm	2
13	90000270	Ball cover M30x10	2
14	90000271	Screw M4x5 DIN7997 8.8 M10x70 Irb	2
15	90000150	Screw M4x5 DIN931 8.8 M10x65 Irb	2
16	90000152	Screw L6.5 ISO 7380.8 8x M8x30 Irb	4
17	90000539	Lock nut DIN 984 C14 M10 Irb	4
18	90000345	Washer DIN175 8.8 Irb	2
19	90000401	Washer DIN172 10.5 Irb	2
20	90000367	ASUSTOTE M 4	6
21	90000259	Ball cover LINAK	1
22	90000384	Screw M4x5 DIN7997 8.8 M10x67 Irb	2
23	90000264	Ball Irb	1
24	90000445	Ball Irb 150 J16x54 152	1
25	90000307	Pivot pin DIN 984 C14 Irb	1
26	90000338	Screw M4x5 DIN931 8.8 M8x50 Irb	1
27	90000026	Lock nut DIN984 C14 Irb	1
28	90000330	Ball cover M30x65	1
29	90000659	Pin Irb 3mmx3.5x6	1
30	90000153	Screw L6.5 ISO 7380.8 8x M8x55 Irb	2
31	90000572	Bearing I06x15	2
32	90000746	Pin Irb 3	1
33	90000665	Bearing I06x45	2
34	90000147	Screw M4x5 DIN931 8.8 M8x55 Irb	1
35	90000400	Pinched Ball Irb M10x95 Irb	1

# Exploded view - mast and boom Eva400EE



ITEM NO.	DOCUMENT NO.	DESCRIPTION	QTY.
1	9000293	Handle	1
2	9002634	Mast	1
3	9000200	Bearing mast/boom	1
4	9000306	Roller sleeve inner	1
5	9000144	Roller	1
6	9000290	Mast pivot casting	2
7	9002628	Top bracket BLAK	1
8	9000308	Nut for mast and boom	1
9	9000304	Roller sleeve	4
10	9000304	Roller sleeve	4
11	9000307	Roller for track	1
12	9000307	Roller for track	2
13	9000298	Spreader bearing casting	2
14	9000298	Spreader bearing casting	2
15	9000364	Roller bracket	1
16	9000386	Eva actuator LA 31 716	1
17	9000014	Control box CBH EVA	1
18	9000330	M10 nut cap	6
19	9000007	Nut cover MSN965	8
20	9000152	Plug button	2
21	9000721	Screw M5 DIN934 8.8 M10x30 hb	2
22	9000038	Screw M5 DIN934 8.8 M10x12 hb	2
23	9000026	Screw M5 DIN934 8.8 M8x50 hb	2
24	9000013	Lock nut DIN954 M6 hb	7
25	9000040	Screw M5 DIN934 8.8 M8x80 hb	2
26	9000028	Screw M5 DIN934 8.8 M8x75 hb	1
27	9000013	Screw M5 DIN934 8.8 M8x65 hb	1
28	9000060	Shoulder bolt ISO7379 12.7 10mmx35	1
29	9000078	Washer DIN125 10.5 hb	4
30	9000078	Screw M5AS DIN9 12x8.8 M5x7.5 hb	2

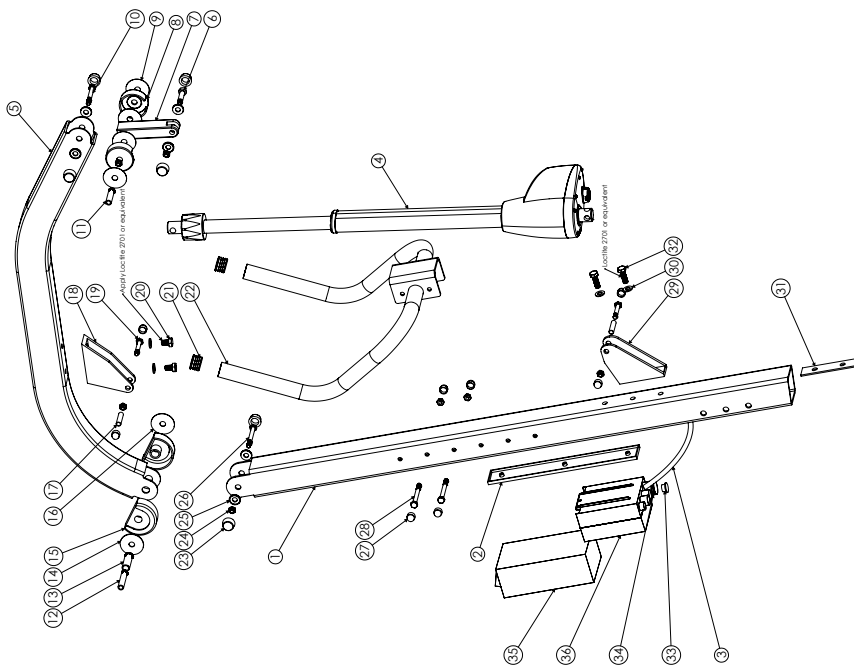
# Exploded view - mast and boom Eva400EM



ITEM NO.	DOCUMENT NO.	DESCRIPTION	QTY.
1	90000293	Handle	1
2	90000434	Mast	1
3	90000300	Burning mast/boom	1
4	90000926	Pivot sleeve inner	1
5	90000144	Boom	1
6	90000290	Mast pivot coating	2
7	90000628	Top bracket L/RAK	1
8	90000928	Nut bar mast and boom	1
9	90000326	Plastic washer	4
10	90000294	Spreader bar pivot	1
11	90000927	Pivot flange roller	2
12	90000291	Spreader bar coating	2
13	90000298	Burning boom SPR	1
14	90000293	Bottom bracket	1
15	90000344	Coil spring A 31 718	1
16	90000364	Coil spring C/BUFEVA	1
17	90000014	M12 nut cap	6
18	90000365	Nut cone/RAK	8
19	90000047	Pin 3/16x1/8	2
20	90000152	Screw M6x DIN931 8.8 M10x20 /lb	2
21	90000271	Screw M6x DIN931 8.8 M10x12 /lb	2
22	90000038	Screw M6x DIN931 8.8 M8x30 /lb	2
23	90000026	Lock nut DIN964 1/8 lb	2
24	90000013	Screw M6x DIN931 8.8 M8x60 /lb	2
25	90000040	Screw M6x DIN931 8.8 M8x75 /lb	1
26	90000028	Screw M6x DIN931 8.8 M8x75 /lb	1
27	90000153	Shoulder bolt ISO 2377 12.9 10x6x35	1
28	90000601	Washer DIN125 10.5 /lb	4
29	90000298	Screw M6x DIN917 8.8 M6x35 /lb	2

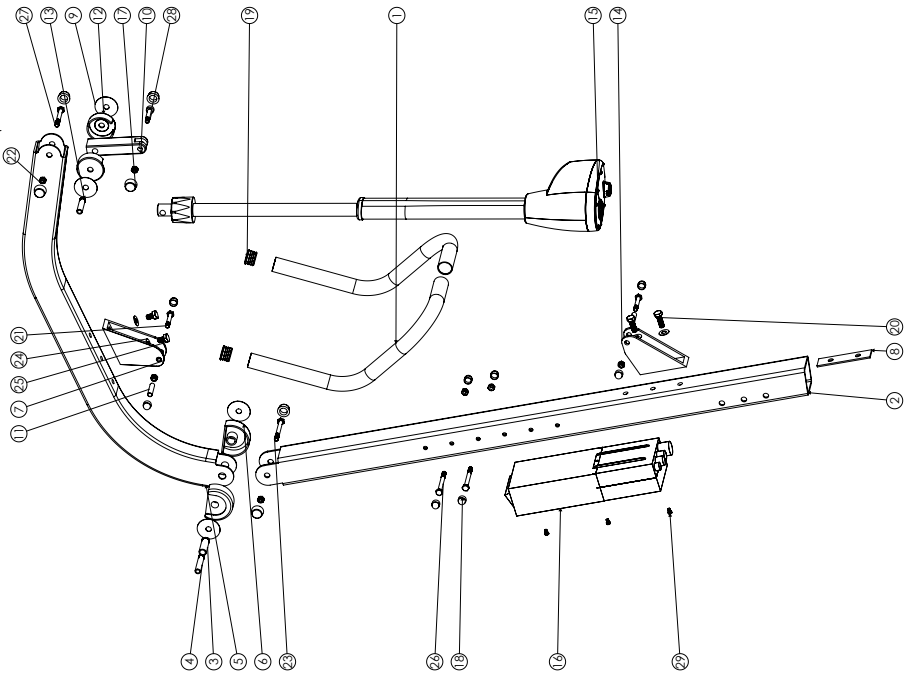
# Exploded view - mast and boom Eva450EM

ITEM NO.	DOCUMENT NO.	TITLE	QTY.
1	9000034	Mast Link	1
2	9000189	Link M8/2 incl. screws	1
3	9000269	Mast cable LA44rok	1
4	9000065	Actuator LA44 718	1
5	9000014	Boom	1
6	9000015	Washer FE 50x126/5	1
7	9000021	Spreader bar pivot	1
8	9000027	Spreader bar coating	2
9	9000028	Screw M6x DIN913 8.8. M6x65 1/2b	4
10	9000028	Screw M6x DIN913 8.8. M6x65 1/2b	1
11	9000028	Bushing boom/1/2b 50x126	1
12	9000030	Bushing mast/boom 62x126	1
13	9000029	Bushing mast/boom 50x16x12	1
14	9000024	Washer FE 50x126/2	1
15	9000029	Mast pivot coating	2
16	9000026	Washer FE 50x126/1	1
17	9000037	Pivot hinged actuator	2
18	9000028	Top bracket Eva Link	1
19	9000038	Screw M6x DIN913 8.8. M6x50 1/2b	2
20	9000067	Screw M6x DIN913 8.8. M10x116 1/2b	2
21	9000047	Plug II 3228-30G	2
22	9000025	Push handle bolt	2
23	9000014	Nut cap M10 grey	6
24	9000026	Lock nut DIN953 M8 1/2b	6
25	9000012	Washer M10 for nut cap	6
26	9000040	Screw M6x DIN913 8.8. M6x75 1/2b	7
27	9000030	Nut cover M3M8G	1
28	9000013	Screw M6x DIN913 8.8. M6x80 1/2b	8
29	9000067	Actuator bottom bracket	2
30	9000060	Washer DIN125 10,5x20x2 1/2b	4
31	9000036	Nut bar mast end/boom	1
32	9000046	Screw M6x DIN913 8.8. M10x30 1/2b	2
33	9000199	Plug for CBJ	1
34	9000194	O-ring for plug CBJ	1
35	9000052	Battery box CB.J	1
36	9000051	Control box CB.2	1



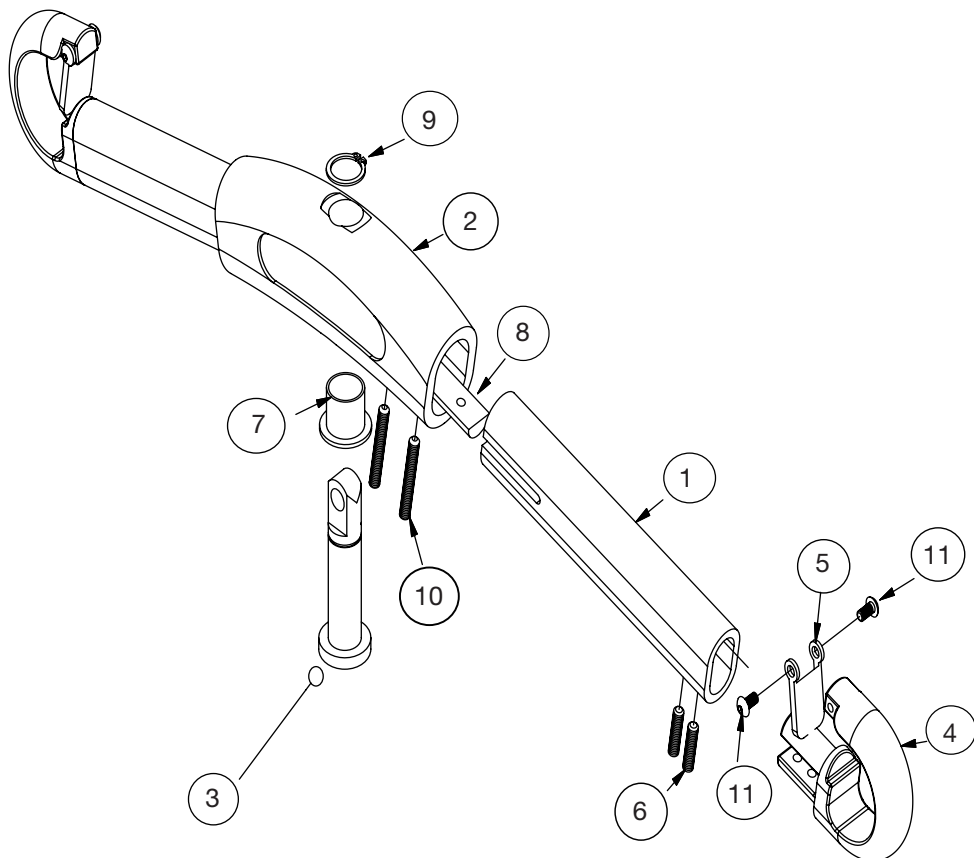


# Exploded view - mast and boom Eva450EE/Eva600EE



ITEM NO.	DOCUMENT NO.	DESCRIPTION	QTY.
1	9000293	Handle	1
2	9000454	Mast	1
3	9000300	Rolling mast/boom	1
4	9000306	Roll sleeve inner	1
5	9000144	Roll sleeve outer	1
6	9000290	Mast pivot casting	2
7	9000428	Top bracket UNAK	1
8	9000308	Nut bar mast and boom	1
9	9000304	Roller	4
10	9000294	Shoulder cast part	1
11	9000307	Roll sleeve casting	2
12	9000291	Screw M5 DIN931 8.8 M8x50 lb	2
13	9000298	Rolling boom SPR	1
14	9000293	Bottom bracket	1
15	9000385	CVA Actuator DA.44	1
16	83590034	Control box CB2	1
17	9000014	MFO nut case	6
18	9000330	Nut cover M8xM6	6
19	9000047	Roller pin	3
20	9000132	Screw M5 DIN931 8.8 M10x20 lb	2
21	9000038	Screw M5 DIN931 8.8 M8x50 lb	2
22	9000026	Lock nut DIN955 M8 lb	2
23	9000040	Screw M5 DIN931 8.8 M8x75 lb	7
24	9000601	Washer DIN175 10.37lb	1
25	9000171	Screw M5 DIN933 8.8 M10x1.6 lb	4
26	9000013	Screw M5 DIN931 8.8 M8x50 lb	2
27	9000028	Screw M5 DIN931 8.8 M8x65 lb	1
28	9000153	Shoulder bolt ISO1217 127 10xM8x35	1
29	9000189	Screw M12x3 DIN7984 6.8 M5x8	3

## Exploded view- SlingBar



### Components-SlingBar

Pos.	Product	Unit
1	Tube	2
2	Centercasting	1
3	Supportpin	1
4	Slinghook	2
5	Hangerstraplock	2
6	Screw for slinghook and tube	4
7	Plasticbushing for supportpin	1
8	Nutbar	2
9	Retainingring	1
10	Screw for tube and center casting	4
11	Screw for hangerstraplock	4

# Periodic inspection - protocol

Lift type:

s/n:

Version:

Prod. year:

Sling bar id.:

Contract no:

Name:

Address:

Situation of use: Home      Institution      Other

**Comments: 1. Attention 2. Correct 3. Do not use!**

**Base:**

		Check for visible damage
--	--	--------------------------

Check:

A		Castor
---	--	--------

B		Brakes
---	--	--------

C		Legspreading
---	--	--------------

**Mast:**

		Inspect the mast
--	--	------------------

Check:

D		Locking handles
---	--	-----------------

E		Lift arm hardware etc
---	--	-----------------------

F		Link
---	--	------

G		Slingbar and the function of the safety latches
---	--	---

H		Mast actuator
---	--	---------------

I		Battery and cable installations
---	--	---------------------------------

J		Hand control
---	--	--------------

K		Emergency stop
---	--	----------------

L		Emergency lowering
---	--	--------------------

M		Charging
---	--	----------

N		Product label
---	--	---------------

O		Lift arm joint
---	--	----------------

**Test of safe working load:**

		Safe working load test mast
--	--	-----------------------------

		Safe working load test base
--	--	-----------------------------

		Mechanical emergency lowering
--	--	-------------------------------

**Accessories:**

**Documentation:**

		Instructions / manuals
--	--	------------------------

**Controll box:**

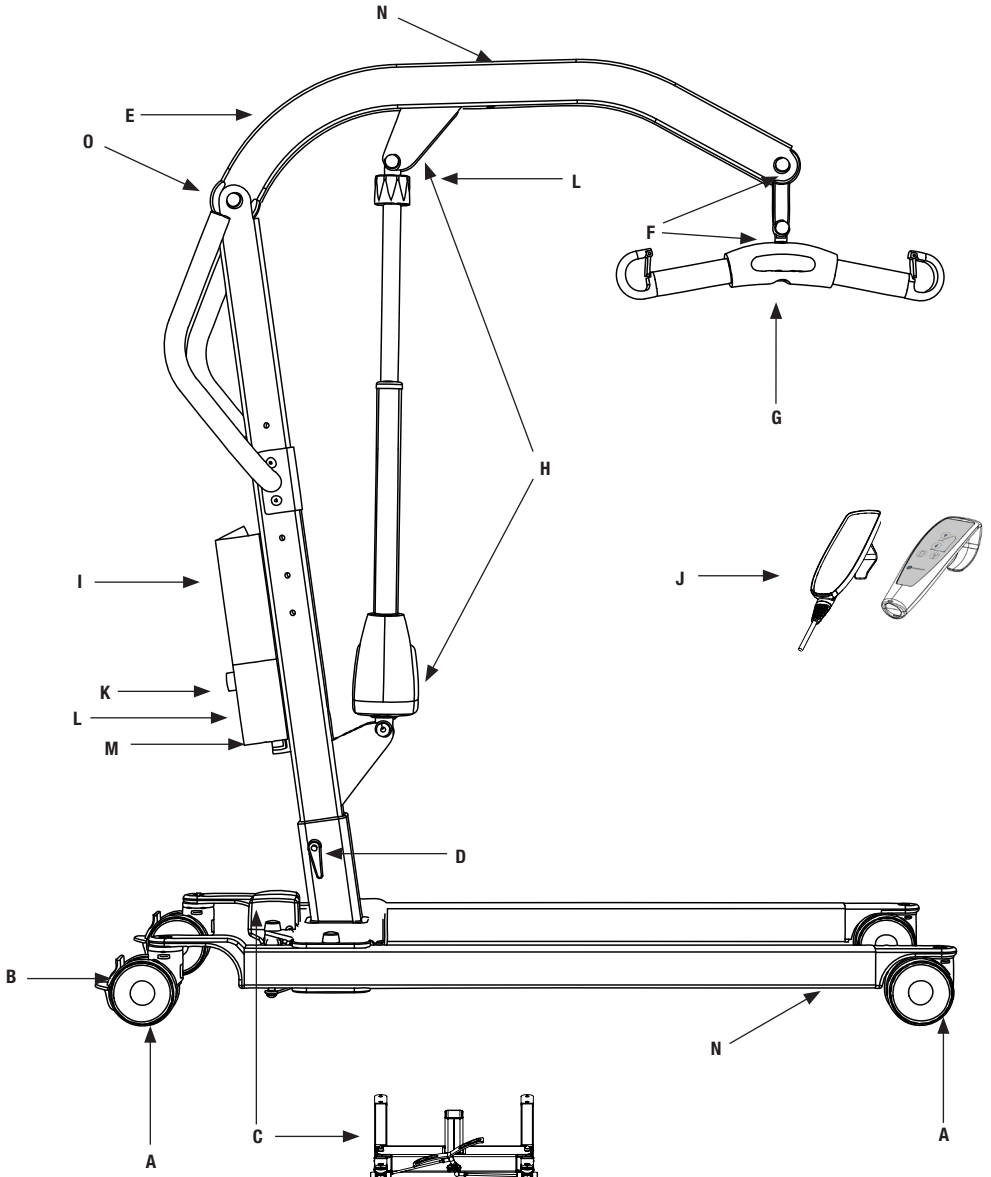
		Reset the control box service counter
--	--	---------------------------------------

Date:

Load test weight:

Serviced by:

## Description for periodic inspection



**Eva400EM/Eva450EM**

## Periodic inspection - instruction

### Check the base

-Check the base for visible damage to the surfaces, finish, etc.

### Castors

-Roll the lift unloaded on the floor, check that the castors roll and turn freely.  
-Check that the castor fasteners are tight.

### Brakes

-Lock the brakes. Check that the castors do not turn when the lift is pushed.

### Check the legspreading actuator

-Check the legspreading actuator for visible damage to the surfaces, finish, etc.  
-Check screws, bolts and links etc.

### Check the mast

-Check the mast for visible damage or deformities on the joints, surfaces, finish etc.  
-Check screws, nuts, bolts etc.

### Locking handles

-Check the locking handles. Verify that threads are not damaged or binding.

### Liftarm, hardware

-Check the liftarm for visible damage to the surfaces, finish etc.  
-Check screws, nuts, bolts etc.

### Link

-Check the link, slingbar to mast, hardware and covers.  
-Check screws, bolts and links etc.

### Slingbar and safety latch function

-Check to ensure that there is no visible wear or damage.

### Check the mast actuator

-Verify that the upper and lower actuator fasteners to the mast are tight.  
-Visual inspection.  
-Check of abnormal noise level.

# Periodic inspection - instruction

## Check battery and electrical cable.

-Verify that all cables are properly inserted.

## Controlbox

-Verify that all functions on the control panel are working

## Handcontrol

-Verify that all functions on the handcontrol are working.

## Emergency stop

-Verify that the lift does not operate when emergency stop is pressed in.

## Emergency lowering

-Verify the function of emergency lowering.

## Charging

-Verify that charging is operating. Yellow lamp on the controllbox should light up when charging.

## Product lable

- Check the serial number so that the label is there and readable. Note the serial number on the protocol.

## Lift arm joint

- Check the joint for cracks or ware.

## Max. load test

Mast max. load

-Run the lift with maximum load, all the way up and down, listen for peculiar noises and vibrations.

Base max. load

-Widen the base with maximum load, listen for peculiar noises and vibrations.

## Accessories

-Check the accessories to the lift.

## Documentation

-Instruction / Manual

**To reset the service counters press both lift buttons on the hand control at the same time for 5 seconds.**

**An audio signal will indicate that the timer has been reset.**



# Maintenance

The lift must undergo thorough inspection at least once per year. Inspection must be performed by authorized personnel and in accordance with Direct Healthcare Group's service manual.

Repairs and maintenance may only be done by authorized personnel using original spare parts.



Used batteries are to be left at the nearest recycling station. Used batteries can also be returned to Direct Healthcare Group or a Direct Healthcare Group dealer for recycling.

## Cleaning/disinfection

If necessary, clean the lift with warm water or a soap solution and check that the castors are free from dirt and hair. Do not use cleaning agents containing phenol or chlorine, as this could damage the aluminium and the plastic materials. If disinfection is needed, 70 % ethanol, 45 % isopropanol or similar should be used.

## Storage and transportation









If the lift is not to be used for some time or e.g., during transport, we recommend that the emergency stop button be pressed in. The lift should be transported and stored in  $-10^{\circ}\text{C}$  to  $+50^{\circ}\text{C}$  and in normal humidity, 30% -75 %. The air pressure should be between 700 and 1060 hPa. Let the lift reach room temperature before the batteries are charged or the lift is used.



## Service agreements

Direct Healthcare Group offers the possibility of service agreements for maintenance and regular testing of your mobile lift. Contact your local Direct Healthcare Group representative.

# Symbols

	Eva400	Eva450/Eva600
	Read user manual	
	May not be discarded in domestic waste	
	The product complies with the requirements of the Medical Devices Directive 93/42/EEC.	
	Type B, according to the degree of protection against electric shock.	
	The device is intended for indoor use.	
	Class II equipment	
	This product is tested and approved in regards to safety in the workplace according to the requirements of the US Occupational Safety & Health Administration. "US" stands for compliance with the requirements of US authorities, "C" for compliance with Canadian requirements.	
	Always read the user manual	



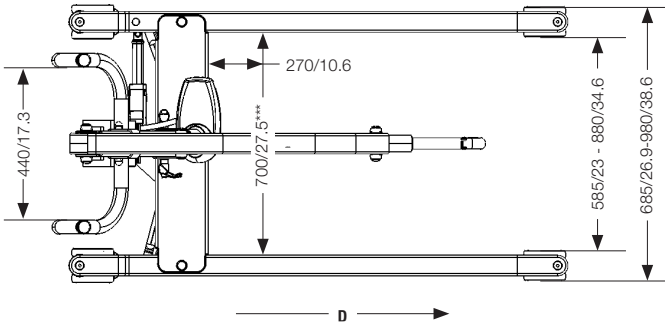
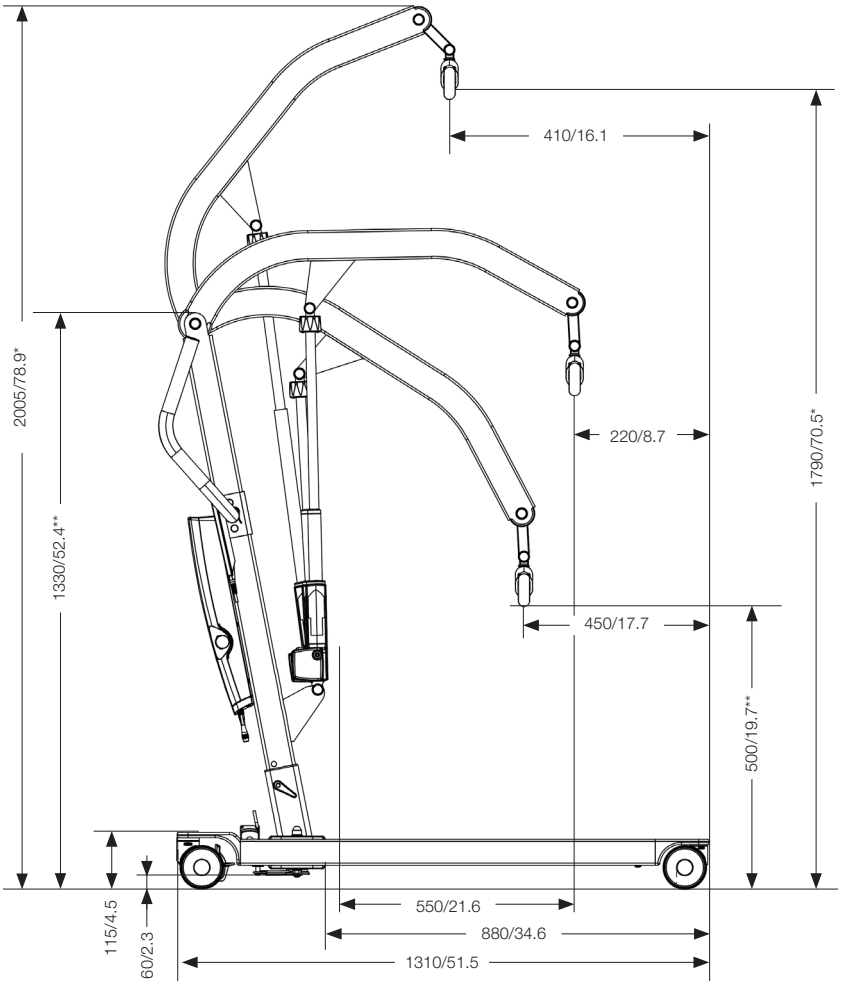
## Technical Information

	Eva400	Eva450	Eva600
<b>Lifting speed</b>	34 mm/s without load.		
<b>Batteries</b>	Two 12V, 2.9 Ah valve-regulated, sealed, lead accumulator (gel-type batteries)		
<b>Internal charger</b>	Included cable. Max. 400mA		
<b>External charger</b>	Linak CH01 (9000368) Mains voltage 100-240VAC (50/60 Hz). Max. 400mA		
<b>Motor (mast):</b>	DC 24V, 5 A. IP X4. Operationtime: 10% at maximum continous running of 2 minutes, maximum 5 switching cycles per minute. Push: 6000N.	DC 24 V, 10 A. IP X4. Operationtime: 10% at maximum continous operation of 2 minutes, maximum 5.5 cycles per minute. Push: 10 000N.	
<b>Motor (base)</b>	24V, 5 A, IP X4. Operationtime: 10% at maximum continous operation of 2 minutes, maximum 5 cycles per minute. Push: 3000N.	24 V, 3 A, IP X4. Operationtime: 10% at maximum continous operation of 2 minutes, maximum 5.5 cycles per minute. Push: 3000N.	
<b>Sound leve</b>	With load: upwards: 43 dB(A) downwards: 44 dB(A).	With load: upwards: 74.7 dB(A) downwards: 52.6 dB(A).	
<b>Material</b>	Aluminum		
<b>Emergency lowering</b>	Mechanical and electrical		
<b>Castors</b>	Front 4", 100 mm, back 4", 100mm		
<b>Weight</b>	75 lbs, 34 kg		86 lbs, 39 kg
<b>Weight of the heaviest component</b>	31.9 lbs, 14.5 kg		
<b>IP class</b>	IP X4		
<b>Expected lifetime</b>	10 years		
<b>Operating forces buttons on handset</b>	4 N		
<b>Turning diameter</b>	1340 mm/ 54 inch		
<b>Max. load</b>	400 lbs, 180 kg	450 lbs, 205 kg	600 lbs, 270 kg

The lift complies with the requirements of Council Directive 93/42/EEC of 14. June 1993 concerning medical devices.

# Dimensions Eva400

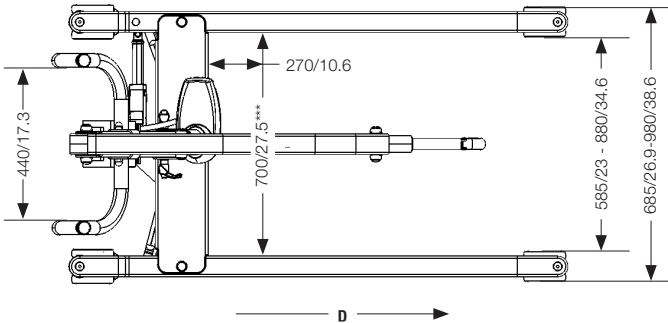
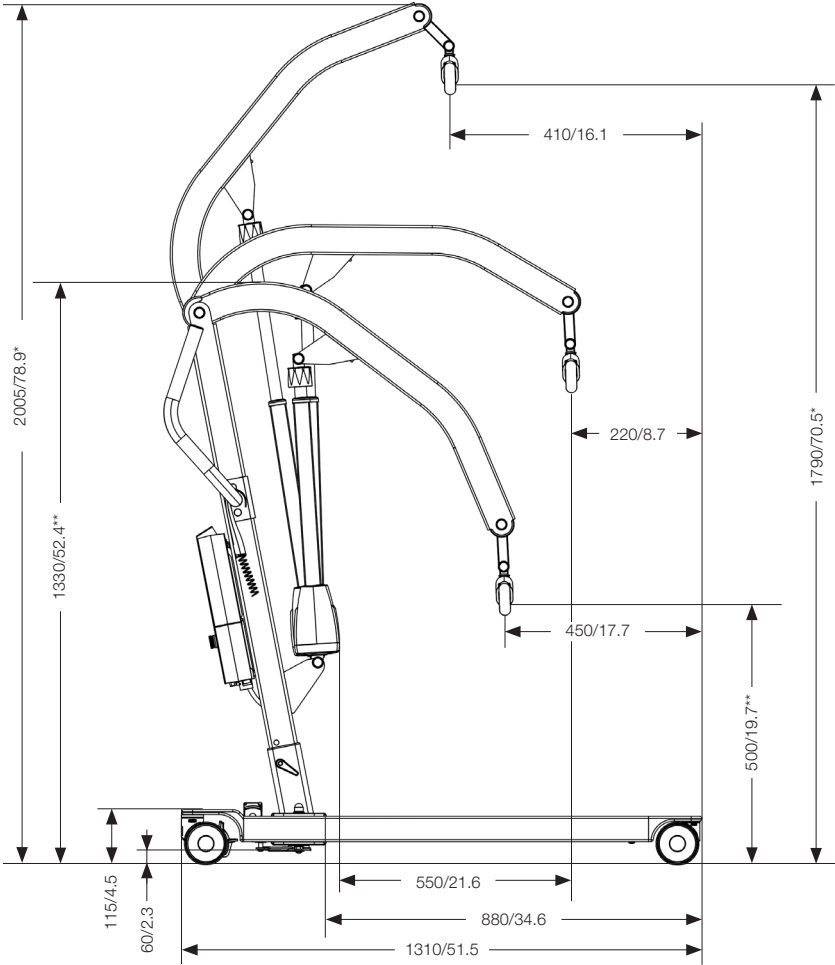
All dimensions are in mm/inch  
Tolerance +/- 5 mm/ 0.2"



**D** is movement in forward direction  
 \* can be 50 or 100 mm lower depending on the placement of the mast in the base socket  
 \*\* can be 50 or 100 mm higher depending on the placement of the mast in the base socket  
 \*\*\* is reference measure 700 mm with max legs spreading

# Dimensions Eva450

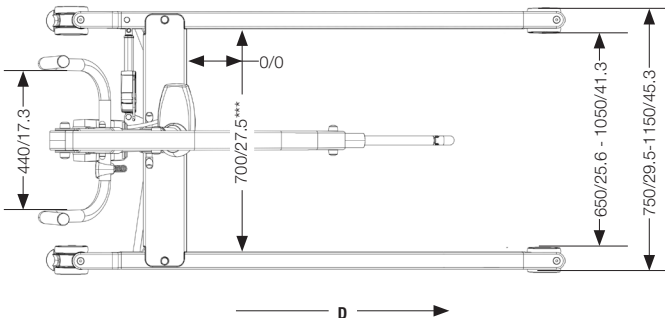
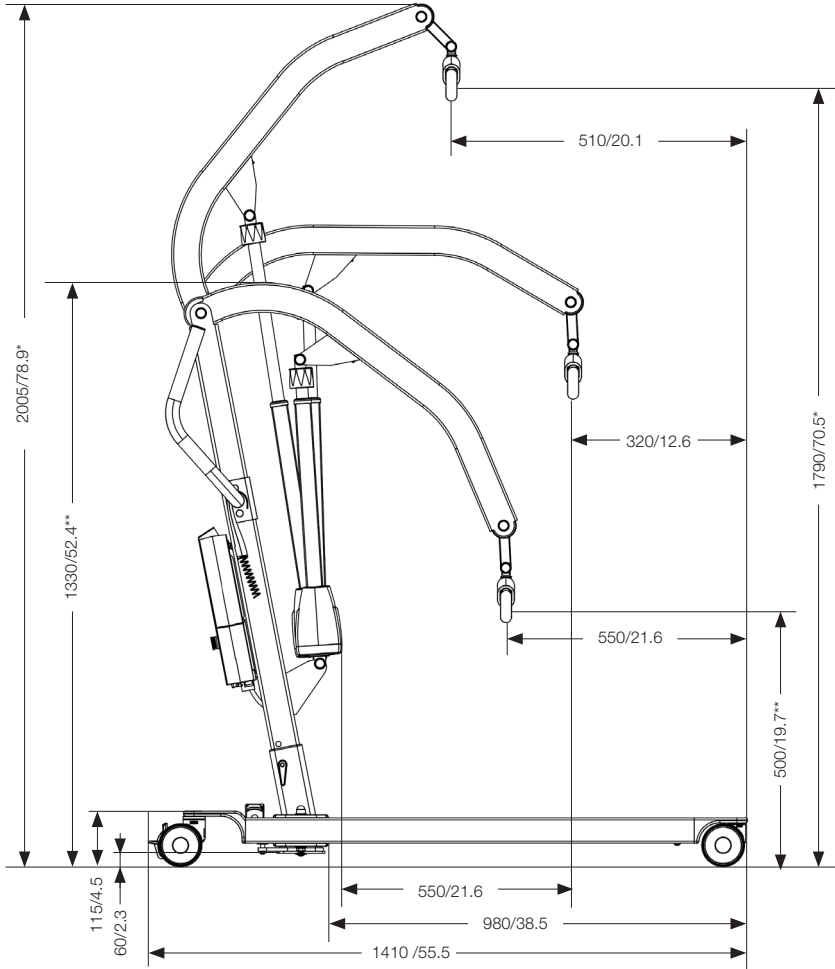
All dimensions are in mm/inch  
Tolerance +/- 5 mm/ 0.2"



**D** is movement in forward direction  
\* can be 50 or 100 mm lower depending on the placement of the mast in the base socket  
\*\* can be 50 or 100 mm higher depending on the placement of the mast in the base socket  
\*\*\* is reference measure 700 mm with max legspreading

# Dimensions Eva600

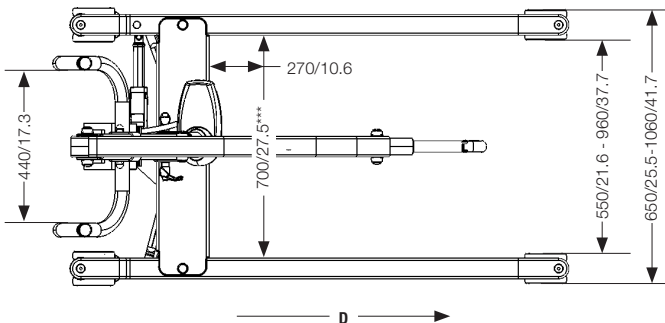
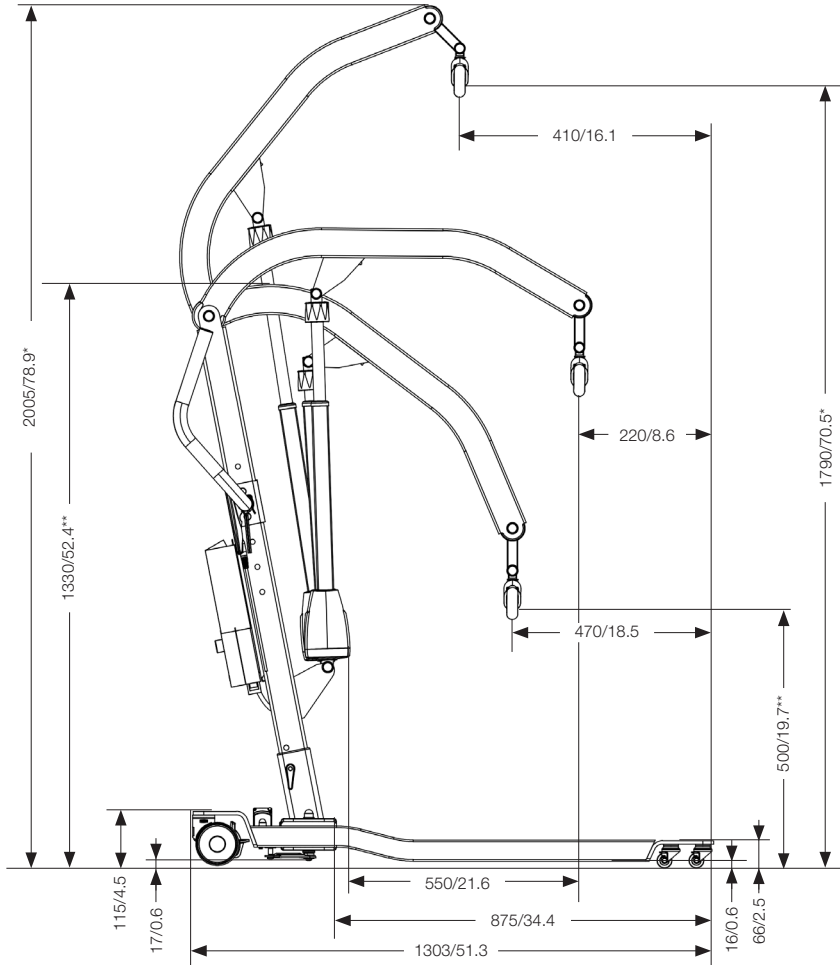
All dimensions are in mm/inch  
Tolerance +/- 5 mm/ 0.2"



**D** is movement in forward direction  
\* can be 50 or 100 mm lower depending on the placement of the mast in the base socket  
\*\* can be 50 or 100 mm higher depending on the placement of the mast in the base socket  
\*\*\* is reference measure 700 mm with max legspreading

# Dimensions Eva450 Low legs

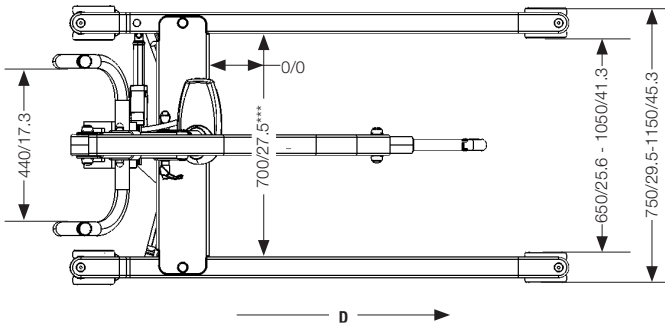
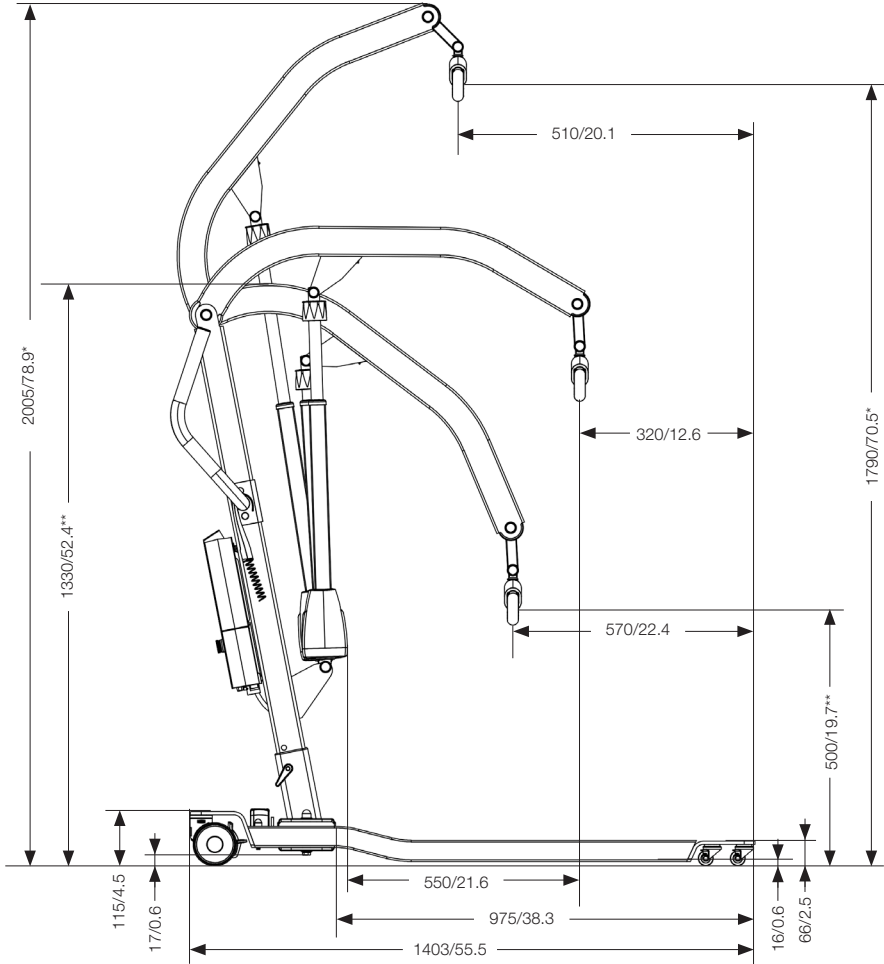
All dimensions are in mm/inch  
Tolerance +/- 5 mm/ 0.2"



**D** is movement in forward direction  
\* can be 50 or 100 mm lower depending on the placement of the mast in the base socket  
\*\* can be 50 or 100 mm higher depending on the placement of the mast in the base socket  
\*\*\* is reference measure 700 mm with max legspreading

# Dimensions Eva600 Low legs

All dimensions are in mm/inch  
Tolerance +/- 5 mm/ 0.2"



D is movement in forward direction  
\* can be 50 or 100 mm lower depending on the placement of the mast in the base socket  
\*\* can be 50 or 100 mm higher depending on the placement of the mast in the base socket  
\*\*\* is reference measure 700 mm with max legspreading



## Simple solutions for great results

SystemRoMedic™ is the name of Direct Healthcare Group's unique easy transfer concept, the market's widest and most comprehensive range of clever, easy-to-use and safe transfer and lifting aids designed to make life easier, both for the user and for the caregiver. SystemRoMedic™ is a complete solution that provides for the majority of patient transfer or manual handling requirements. From the simplest to the most complex scenarios, from the lightest to the heaviest. The concept encompasses assistive devices for four different categories of transfers:

- Transfer, assistive devices for manual transfers of users between two locations.
- Positioning, assistive devices for manual repositioning of users within the same location.
- Support, assistive devices for mobility support e.g., during sit-to-stand or gait training.
- Lifting, assistive devices for manual and mechanical lifting of users.

## Improved work environment, improved quality of care and cost savings

The philosophy behind SystemRoMedic™ is focused on the prevention and reduction of occupational injuries while allowing users to experience a greater sense of independence and dignity. Through a unique combination of training and a complete range of efficient transfer aids, SystemRoMedic™ offers improvement of both work environment and quality of care and, at the same time, achieves significant cost savings.

## Always make sure that you have the correct version of the manual

The most recent version of all manuals are available for downloading at/from our website;  
[www.directhealthcaregroup.com](http://www.directhealthcaregroup.com)

## For questions about the product and its use

Please contact your local Direct Healthcare Group and SystemRoMedic™ representative. A complete list of all our partners with their contact details can be found on our website; [www.directhealthcaregroup.com](http://www.directhealthcaregroup.com).

# Direct Healthcare Group

Advancing Movement & Health

Direct Healthcare Group Sverige AB  
Torshamnsgatan 35,  
SE-164 40 Kista, Sweden

Tel: +46 (0)8-557 62 200  
[info@directhealthcaregroup.com](mailto:info@directhealthcaregroup.com)  
[www.directhealthcaregroup.com](http://www.directhealthcaregroup.com)