



A DIRECT HEALTHCARE GROUP COMPANY

Stand Tall Walkers Transfer Platforms Hygiene Chairs

Product Catalogue



We do better

We have a long tradition of product and concept development at GATE. We create new solutions, new possibilities and new opportunities for users and care personnel alike by applying new technologies to our passion for design and nursing. We help create a safer, brighter world.

At GATE, we always endeavor to be at the leading edge when it comes to design and innovation for healthcare aids. All of GATE's proprietary products have that little something extra – a component, a solution or materials that no other manufacturer has.

"...our products are your best investment"

When we develop new products we create products that have their own intrinsic value - made using modern materials and designs with innovative – and sometimes unexpected – solutions. Our vision is for our products to be your best investment.

GATE'S personnel has decades of experience in the rehabilitation aids industry and share a common passion – to make a difference, create a better quality of life and new possibilities for managers, specialists, care personnel and users alike.

Let us explain why a GATE product is such a great investment.

GATE

GATE was founded in 2004 and initially worked mostly with the development and sales of rollators and simpler products for home care. Over time, GATE developed and today it works with the innovation and development of its own walkers and hygiene chairs.

GATE has its headquarters and warehouse in Reftele, Småland in a Swedish region characterised by a distinct entrepreneurial spirit and the power of innovation. Today, GATE strives to create new possibilities for a better, safer day-to-day world for users and care personnel alike.

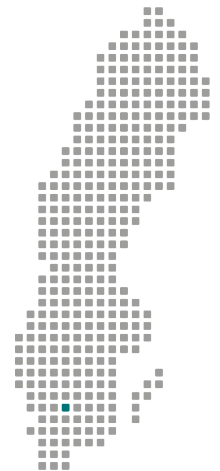


Table of Contents

Introduction	03	StandTall Walker with Power Rise	15
		Bure Rise & Go DB	16
		Bure Rise & Go	17
		Accessories	18
StandTall Walkers	04	Hygiene Chairs	22
Bure Double 2.0	05	EASY™ SoftBack	23
Bure Ortho/Space	06	EASY™ HighBack	24
Bure Standard/Bure S	07	Amfibi XL	25
Bure Low	08	Accessories	26
Bure XL	09		
Accessories, StandTall Walkers	10		
Transfer Platform, Mover Aqua	14		

Bure™

StandTall Walker

New possibilities for patients.
New conditions for carers like you.



The StandTall Walker has had a central function in healthcare even though it has lived life out of the limelight. But now GATE has thrown out all its old solutions and started again from scratch. The result is the Bure StandTall Walker with its unique ergonomics.

Improved general condition

Apart from being an excellent aid for getting patients up and about, the walker is also a valuable rehabilitation tool. Rehabilitation using the walker keeps the patient's muscles and alimentary canal active and generally contributes to improving the general condition of the otherwise bedridden. It makes it easier for infirm patients or those with weak legs to walk, and some can even manage without the support of healthcare personnel.

Improved work ergonomics

The walker creates conditions for much better working ergonomics for those who care for, train and work together with patients. For example, the open design provides increased manoeuvring space and makes access easier when getting up or dressing. The Bure StandTall Walker contributes to reduced workloads and is an investment in personnel health.

More possibilities – better availability

In 2019, all of our StandTall Walkers with electrical actuators will be delivered with the Li-On battery technology. This will give a better availability since this new technology has a better performance and a longer lifespan compared to today's Pb technology. All products will also be available with actuators from Linak <NEW> or Timotion. (In our catalogue, products are shown with Timotion actuators).

Bure Double 2.0

The new Bure Double is equipped with twin electric drives for raising and lowering the walker and widening the walking frame. The new version has a significantly lower height above the walking frame for better access and a higher user weight (150 kg) compared to the earlier version.

Sustainable

The StandTall Walker has an extra reinforcement band around the arm rest cushions to prevent them from splitting from impacts to the side. Armrests in PU foam are available as an alternative for additional comfort/hygiene.

Height-adjustable handles
See accessories.

Ergonomic handles

Ergonomically designed handles are steplessly adjustable in every direction for optimum individual comfort. This is extremely important for stroke patients who can thus reach their "usual" hand position.

Easily reachable hand controller

The hand controller is located such that both of the carer's and user's hands can easily reach it.

Flexible stepless adjustment

Electrically driven height adjustment makes it easy to pre-set the walker to the desired height. Once the patient is standing, the height can be finely adjusted so the walker is comfortable to use and provides the best support for walking.

Power Rise

Bure Double provides excellent assistance when helping patients stand up. The strain on personnel, and thus repetitive strain injuries, is minimised. Some patients can even get up on their own with the assistance of the walker.

Stable

The walker has anatomical cushions that provide relief for shoulders, arms and the neck, and shift the focus to larger muscle groups such as leg and chest muscles instead. This improves stability and makes the walker easier to steer.

Open design

The open design provides the same stability but with greater room for manoeuvre. The patient does not feel shut in and it makes it easier to help with standing up and dressing.

Low height

Low ground clearance makes it easy to get close to patients e.g. when they are sitting on their beds.

Lockable castors

All four castors are individually lockable as standard on Bure Double.

Eminently suitable at home

Because Bure Double is so flexible it is eminently suitable for the home environment. With the frame arms in the inner position the StandTall Walker is narrow, easy to manoeuvre and able to negotiate most doorways.

Waterproofing

All Bure Double electrical components have IP 65 international protection ratings and can therefore be used in wet spaces.

Electrically driven frame widening

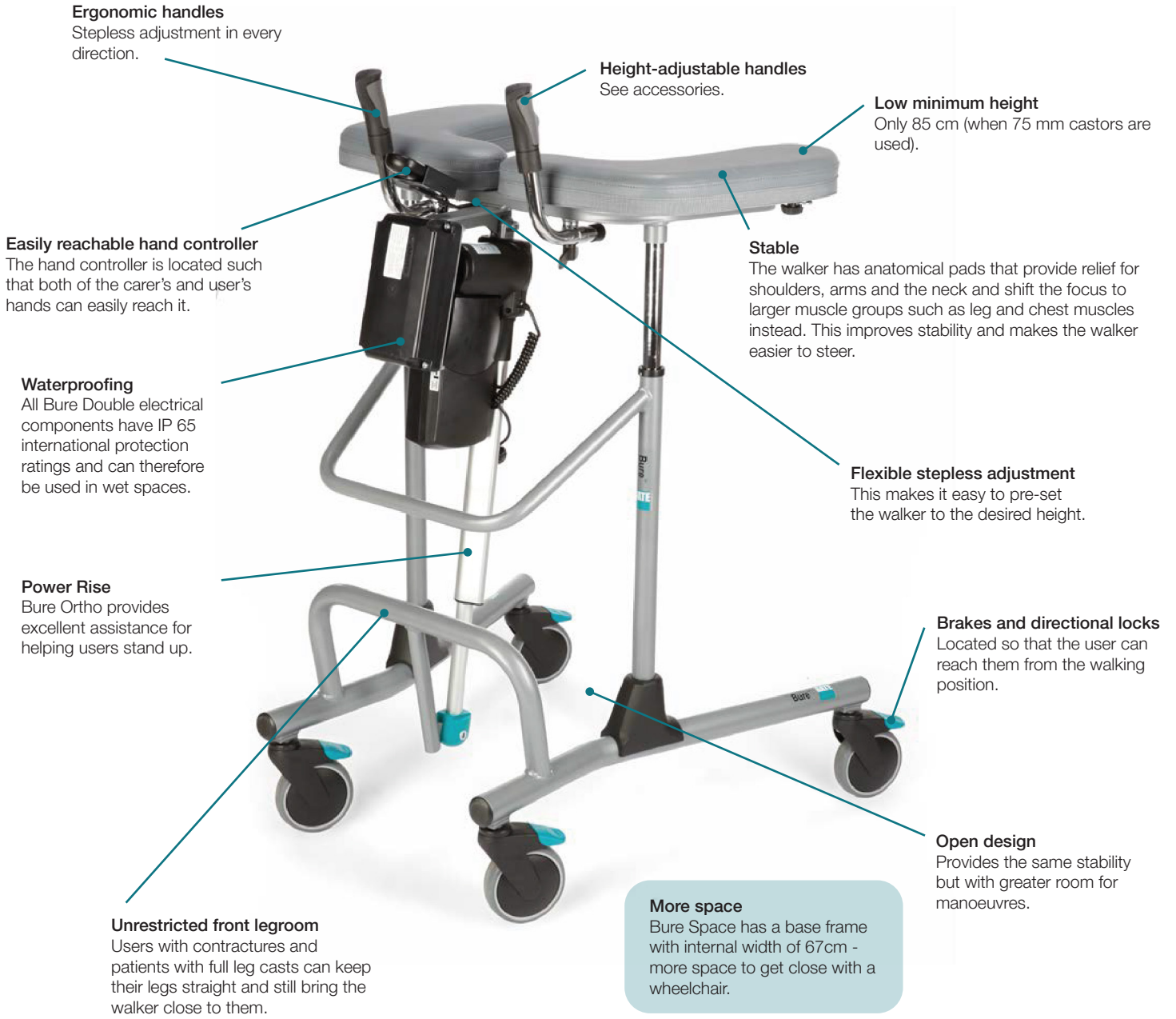
Electrically driven frame widening makes it easy to move the walker right up close to users without worrying about wheelchair width, chair width or bed design. It also helps personnel assist patients to stand up. With the frame in its outer position, the walker is even more stable and can be used to best advantage by the user and it also helps patients who need extra walking space.

Technical Specifications

Part No.	Product	Width	Max patient weight	Length	Height	Armrest/internal dimension
56-303/75	Bure Double 2.0 EL, 75mm hjul	64-95cm	150kg	87cm	85-125cm	25-50cm
56-303	Bure Double 2.0 EL, 125mm hjul	64-95cm	150kg	87cm	90-130cm	25-50cm

Bure Ortho/Space

Ortho is especially designed for orthopaedics departments and situations that demand extra legroom and room for manoeuvre for the user. Ortho has a powerful electric motor for powered height adjustment. Walker heights are thus adjustable with the patient in situ and the walker can be used as a stand-up aid. Ortho is also available in a small version – Ortho S (only available in the GAS version) – with a max frame width of only 65 cm. In addition to Ortho's advantages, Bure Space also has extra room to get up close to wheelchairs or similar. The base frame has been made wider and the internal width extended to 67 cm. Bure Space is available with electrically operated or hydraulic height adjustment.



Ergonomic handles
Stepless adjustment in every direction.

Height-adjustable handles
See accessories.

Low minimum height
Only 85 cm (when 75 mm castors are used).

Easily reachable hand controller
The hand controller is located such that both of the carer's and user's hands can easily reach it.

Stable
The walker has anatomical pads that provide relief for shoulders, arms and the neck and shift the focus to larger muscle groups such as leg and chest muscles instead. This improves stability and makes the walker easier to steer.

Waterproofing
All Bure Double electrical components have IP 65 international protection ratings and can therefore be used in wet spaces.

Flexible stepless adjustment
This makes it easy to pre-set the walker to the desired height.

Power Rise
Bure Ortho provides excellent assistance for helping users stand up.

Brakes and directional locks
Located so that the user can reach them from the walking position.

Unrestricted front legroom
Users with contractures and patients with full leg casts can keep their legs straight and still bring the walker close to them.

More space
Bure Space has a base frame with internal width of 67cm - more space to get close with a wheelchair.

Open design
Provides the same stability but with greater room for manoeuvres.

Technical Specification

Part No.	Product	Width	Max user weight	Length	Height	Armrest/internal dimension
56-317T	Bure Ortho, 125mm hjul	78cm	150kg	80cm	90-130cm	25-50cm
56-318	Bure Ortho Gas, 125mm hjul	78cm	150kg	80cm	90-130cm	25-50cm
56-318-S	Bure Ortho S Gas, 125mm hjul	65cm	150kg	79cm	90-130cm	30-45cm
56-304	Bure Space EL, 125mm hjul	78cm	150kg	79cm	90-130cm	25-50cm
56-307	Bure Space Gas, 125mm hjul	78cm	150kg	79cm	90-130cm	25-50cm

Bure Standard/S

Bure Standard and Bure S are available in three versions: Electric, Gas and Manual. Bure S is a narrower version of the Bure Standard specially adapted to work in confined spaces. Both models have stepless forearm support height adjustment.

Ergonomic handles

Ergonomically designed handles that are steplessly adjustable in every direction for optimum individual comfort. This is extremely important for stroke patients who can thus reach their "usual" hand position.

Height-adjustable handles

See accessories.

Sustainable

StandTall Walkers are designed to last. For example, they have extra reinforcement bands around the arm rest cushions to prevent them from splitting from impacts to the side.

Stable

The walker has anatomical pads that provide relief for shoulders, arms and the neck and shift the focus to larger muscle groups such as leg and chest muscles instead. This improves stability and makes the walker easier to steer.

Easily reachable hand controller

The hand controller is located such that both of the carer's or user's hands can easily reach it.

Flexible stepless adjustment

Electrically driven height adjustment makes it easy to pre-set the StandTall Walker to the desired height. Once the patient is standing in position the height can be steplessly adjusted for comfort and the proper support for an optimal walking configuration.

Power Rise

Bure Standard EL and Bure S provide excellent assistance when helping patients and users stand. The strain on personnel, and thus repetitive strain injuries, are minimised. Some patients can even get up on their own with the assistance of the StandTall Walker.

Brakes and directional locks

There are optional one or two-handed brakes that can be positioned so that the user can reach them from the walking position. The handbrake acts on the rear castors and the brake assembly also includes directional locks that make it easier for the user to stay on course when walking.

Eminently suitable at home

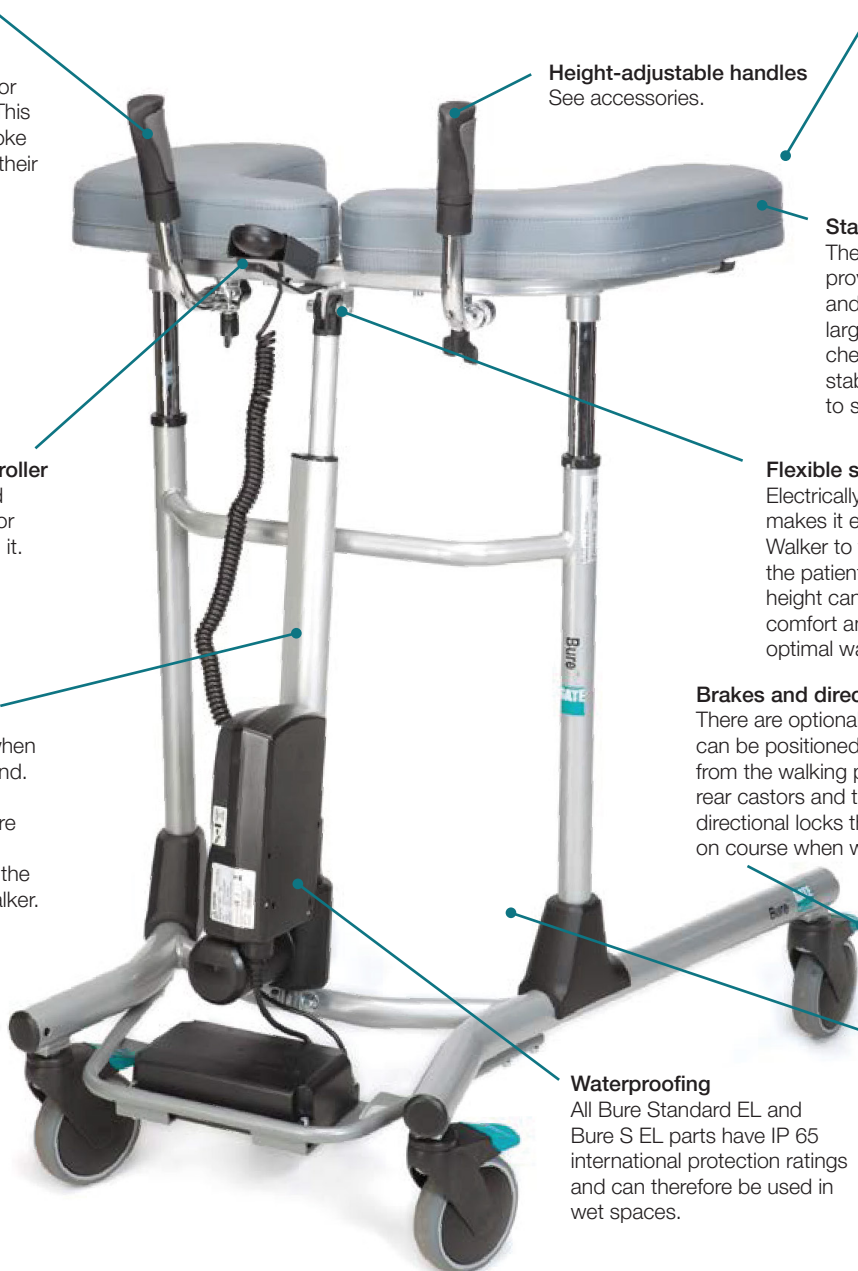
Bure S is perfectly suited to confined spaces such as at home or in some care accommodation. Bure S will pass through most doorways that are 70 cm or wider.

Waterproofing

All Bure Standard EL and Bure S EL parts have IP 65 international protection ratings and can therefore be used in wet spaces.

Open design

The open design provides the same stability but with greater room for manoeuvre. The patient does not feel shut in and it makes assistance with standing up and dressing easier.



Electric

Bure Standard and Bure S electric are ideal for users who need a walkers equipped with power rise and which are capable of height adjustment once a patient is standing.

Gas

Bure Standard and Bure S gas are ideal for users who need a quality walker capable of stepless height adjustment but who do not need assistance from a power rise actuator.

Manual

Bure Standard and Bure S manual are great for users who need good, individually adaptable walkers but who do not need to adjust the height very often and who have no need of assistance from a power rise actuator.

Technical Specification

Part No.	Product	Width	Max user weight	Length	Height	Armrest/Internal dimension
56-312T	Bure Standard EL	78cm	150kg	80cm	90-130cm	25-50cm
56-311	Bure Standard Gas	78cm	150kg	80cm	90-129cm	25-50cm
56-310	Bure Standard Manuell	78cm	150kg	80cm	90-133cm	25-50cm
56-302T	Bure S EL	66cm	150kg	79cm	90-130cm	30-45cm
56-301	Bure S Gas	66cm	150kg	79cm	90-129cm	30-45cm
56-300	Bure S Manuell	66cm	150kg	79cm	90-133cm	30-45cm

Bure Low

Bure is now also available in a lower model for short users. The model is the same as Bure Std/S except that the min/max heights are significantly lower (70-95cm with 75mm casters). Bure Low is available with two different lower frames, Std and S. Both versions are available with electric height adjustment or height adjustment using gas struts.

Ergonomic handles

Ergonomically designed handles that are steplessly adjustable in every direction for optimum individual adaptation. This is extremely important for stroke patients who can thus reach their "usual" hand position.

Height-adjustable handles

See accessories.

Easily reachable hand controls

The hand controls are located such that both of the carer's or user's hands can easily reach them.

Sustainable

The walker is designed to last a long while. For example it has extra reinforcement bands around the arm rest cushions to prevent them from splitting from impacts to the side.

Stable

The walker has anatomical pads that provide relief for shoulders, arms and the neck and shift the focus to larger muscle groups such as leg and chest muscles instead. This improves stability and makes the walker easier to steer.

Power Rise

Bure Standard EL and Bure S provide excellent assistance when helping patients and users stand. Personnel burdens, and thus repetitive strain injuries, are minimised. Some patients can even get up on their own with the assistance of the Standtall Walker.

Flexible stepless adjustment

Electrically driven height adjustment makes it easy to pre-set the Standtall Walker to the desired height. Once the patient is standing in position the height can be steplessly adjusted for comfort and the proper support for an optimal walking configuration.



Eminently suitable at home

Bure S is perfectly suited to confined spaces such as at home or in some care accommodation. Bure S will pass through most doorways that are 70 cm or wider.

Waterproofing

All Bure Standard EL and Bure S EL parts have IP 65 international protection ratings and can therefore be used in wet spaces.

Open design

The open design provides the same stability but with greater room for manoeuvre. The patient does not feel shut in and it makes assistance with standing up and dressing easier.

Brakes and directional locks

There are one or two optional hand brakes that can be positioned so that the user can reach them from the walking position. The handbrake acts on the rear castors and the brake assembly also includes directional locks that make it easier for the user to stay on course when walking.

Technical Specification

Part No.	Product	Width	Max user weight	Length	Height	Armrest/internal dimensions
56-321/75	Bure Low EL, 75mm hjul	78cm	150kg	80cm	70-95cm	25-50cm
56-321-S/75	Bure Low S EL, 75mm hjul	66cm	150kg	79cm	70-95cm	30-45cm
56-322/75	Bure Low Gas, 75mm hjul	78cm	150kg	80cm	70-95cm	25-50cm
56-322-S/75	Bure Low S Gas, 75mm hjul	66cm	150kg	79cm	70-95cm	30-45cm

Bure XL

Bure XL was designed for the bigger, heavier patient and therefore provides extra space and strength. Because extra powerful aids are required in the care and nursing of heavier patients, Bure XL is always supplied with electric drives.

Ergonomic handles

Ergonomically designed handles that are steplessly adjustable in every direction for optimum individual comfort. This is extremely important for stroke patients who can thus reach their "usual" hand position.

Height-adjustable handles

See accessories.

Sustainable

StandTall Walkers are designed to last. For example, they have extra reinforcement bands around the arm rest cushions to prevent them from splitting from impacts to the side.

Stable

The walker has anatomical cushions that provide relief for shoulders, arms and the neck, and shift the focus to larger muscle groups such as leg and chest muscles instead. This improves stability and makes the walker easier to steer.

Easily reachable hand controller

The hand controller is located such that both of the carer's or user's hands can easily reach it.

Flexible stepless adjustment

Electrically driven height adjustment makes it easy to pre-set the walker to the desired height. Once the patient is standing in position the height can be steplessly adjusted for comfort and the proper support for an optimal walking configuration.

Power Rise

Bure XL is a good aid for helping patients and users stand and reduces strain on employees. Some patients can even get up on their own with the aid of the walker.

Designed for weight

The Bure XL is designed to provide support for heavier patients up to 240 kg. This StandTall Walker has also been widened to provide good stability and plenty of space. The inner dimension is 44–62 cm. The extra leg room makes it especially easy for patients who need extra walking space due to e.g. leg spasms.

Open design

Provides the same stability but with greater room for manoeuvres.

Waterproofing

All Bure XL electrical components have IP 65 international protection ratings and can therefore be used in wet spaces.

Hospitals and nursing homes

Because of its size, Bure XL is best suited to hospitals and nursing homes.



Technical Specification

Part No.	Product	Width	Max user weight	Length	Height	Armrest/internal dimension
56-315	Bure XL EL	88cm	240kg	78cm	91-131cm	44-62cm

Accessories

New Features

New, improved platform

We have developed a new platform to replace the current aluminium model (does not apply to the Bure Ortho or the Bure XL platform). The new platform is hung from the front of the walker and has its own rear castors to facilitate manoeuvring. The new platform is not only lighter and smaller, it is also simple and easy to use.



Handlebar for easier manoeuvring

We've developed a new handlebar to make it easier for carers to help wheelchair users in the best, most convenient way. The handlebar makes it easy to manoeuvre our walker, especially when the user is standing on the platform. The handlebar is easy to fit and can be retrofitted on all Bure Walkers (except for Bure XL).



Shin supports

A shin support is now available to further extend and improve the use of our standard walkers for help with standing and mobility. The accessory can be used with all walkers except Rise&Go (DB) and Bure XL. Because of the tip risk depending on the patient and walker model, we recommend the accessory only be used in combination with a platform and/or stirrups/tip protection.



Gait training belt STD

Many have asked for a functional Gait training belt that can be used with our standard range of StandTall walkers. Our new Gait training belt is attached to 4 points providing good support for training and safety in case of falling.

Max userweight = 150 kg.



GATE PLUS

Did you know GATE now offers additional functions on every electric walker? The new functions are integrated into the hand controller/ PLUS (accessory). We call these new functions GATE PLUS. Hand controller/PLUS is suitable for all walkers (not Bure XL) produced after 25 November 2015. Hand controller/ PLUS can be specified when placing a new order or ordered as an accessory and will provide the following functions:

- Multiple speeds – there is a fast mode in addition to the current standard speed (+40% compared to standard speed).
- Battery indicator in the hand controller – makes it easy to see when it's time for a recharge.
- Service indicator – helps you keep track of when your walker needs service and maintenance (at least once a year).



Hygiene Management – new armrests pads in PU

As an alternative to our current cold foam armrest pads, we are launching pads in moulded polyurethane. Their primary advantages are the lack of perforations or edges that allow water and bacteria to penetrate and remain in the surface after cleaning and/or disinfecting. This makes it easier to keep the walker clean between each user. Our new polyurethane armrest pads are available for all walkers. Polyurethane shin supports are also available for Rise & Go (DB). The new pads can be specified when placing new orders or ordered as retrofit accessories. Please note that the armrest pads PU will add 5cm on the overall width compared to measures given.



Walker movement controlled by buttons in the handles.

We now offer remote control also through buttons in the handles. We offer push button or rocker switch control. All functions can be operated in this way. The accessory is also retrofittable and when necessary it can be used in combination with the regular hand controller.



Accessories

Drip holder with attachment
Provides great freedom for the patient to move around at home or on the ward. Supplied with attachment fitting.

Hand controller
GATE PLUS provides a number of extra functions such as multiple speeds and or service/ battery indicator in the hand controller.

PU foam armrest pads
PU foam armrest pads can be specified with the order or selected retroactively. The pads have no perforations or edges that accumulate dirt. An excellent alternative where high standards of hygiene management are demanded. Please note that the armrest pads PU will add 5cm on the overall width compared to measures given.

Soft basket with attachment
Basket with attachment has room for all the important stuff.



Stirrup
Acts as a counter weight and provides extra stability and safety when the walker is used for stand up assistance. For standard Rise & GO. Not for use on walkers with lower frame widening.

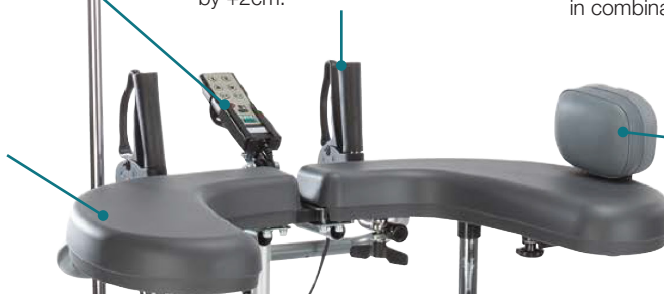
Directionally lockable castor
125mm
100mm
75mm



Hand brake kit, one or two brakes
Adds a hand brake to the StandTall Walker so that the user is able to halt the walker's movement during walking exercises. Castors with directional locks included for extra safety/assistance. The one-handed brake is available left and right handed. When the handbrake kit is installed, base frame width is increased by +2cm.



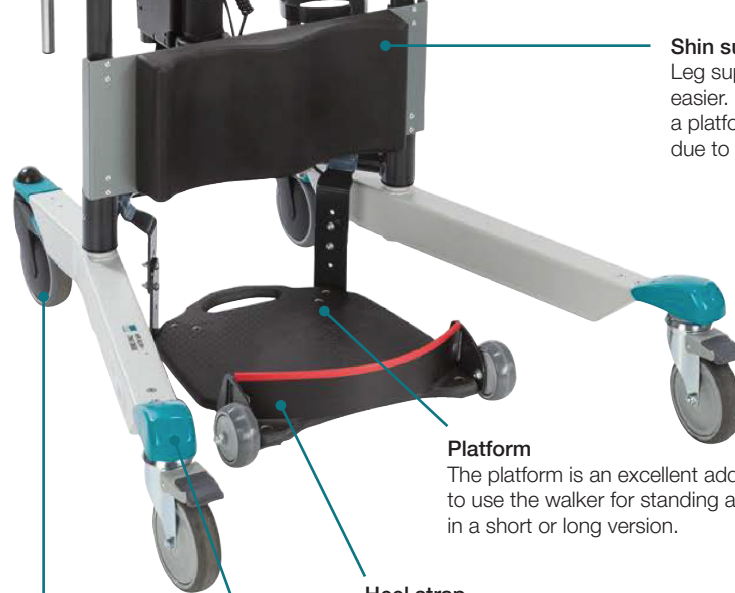
Control for Raise/Lower and handle widening
We offer push button or rocker switch control. All functions can be operated in this way. The accessory is also retrofittable and when necessary it can be used in combination with the regular hand controller.



Adjustable side supports
Prevents arms from sliding from arm rest cushions. Steplessly adjustable along the StandTall Walker's sides to further stabilise walking. The side support is also available in a PU version.

Oxygen bottle holder with bracket
Means patients are no longer confined to bed.

Shin supports
Leg supports make standing and mobility easier. However, they should be used with a platform and stirrup or tip protection due to the risk of tipping backwards.



Platform
The platform is an excellent addition when you want to use the walker for standing and mobility. Available in a short or long version.

Heel strap

Castor with brake
125mm
100mm
75mm

Hand brake kit

Accessories



Drip rod complete with attachment



Side support/Side support PU



Platform short/long



Platform, short/long, castors (/SW)



Handbrake kit DB



Handbrake kit standard



Castor with brake 75, 100, 125 mm



Castor with directional locking 75, 100, 125mm



Shin supports



Soft basket



Tube holder incl bracket



Armrest cushions, PU



Handlebar



Heel strap to platform



Control/handle - rocker switch



Control/handle - push button switch



Tip protection - backwards



Stirrup



Gait training belt STD

Did you know that...



The new Bure DB now has lower ground clearance, which makes it significantly easier to fit under beds and thus get closer to the user. When fitted with 75 mm castors, Bure DB is especially low.



If you choose a walker with electrically adjustable widening you are also choosing increased flexibility. You can get close to the patient regardless of wheelchair or chair width. Also note that in most cases the platform will fit between a wheelchair's front castors.



The platform is an excellent addition when you want to use the walker for mobility, standing up and patient transits. The platform is narrow enough for use on most wheelchairs.

Quick List

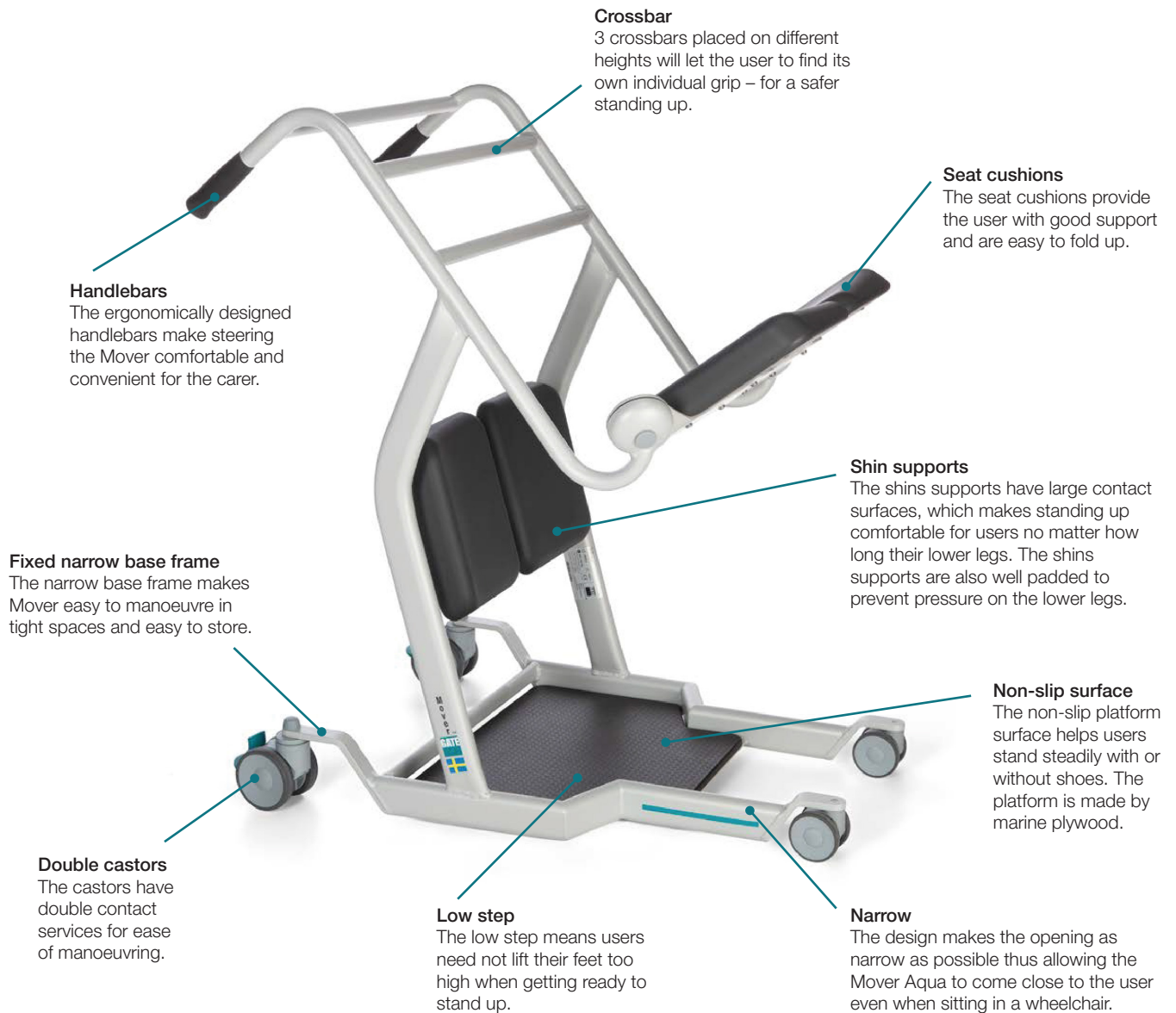
Description	Part No.	Bure Std/S	Bure Low	Bure Ortho	Bure Space	Bure DB 2.0	Bure XL
Armrest cushions PU, Std/Low/DB/Ortho/Space/XL	57-361-PAR	x	x	x	x	x	x
Armrest cushions (Std) Foam, Std/Low/DB/Ortho/Space	56-366-PAR	x	x	x	x	x	x
Drip rod complete with holder	56-338	x	x	x	x	x	x
Electric motor kit + battery incl battery shelf, Low	56-332T-LOW		x				
Electric motor kit + battery incl battery shelf, Std	56-332T	x					
Gas strut kit incl complete, Low	56-330-LOW		x				
Gas strut kit incl complete, Std	56-330	x					
Gait training belt STD	56-388	x	x	x	x	x	
Castor with brake 75mm	56-387	x	x	x	x	x	x
Castor with brake 100mm	56-358	x	x	x	x	x	x
Castor with brake 125mm	56-361	x	x	x	x	x	x
Castor with directional locking 75mm	57-043	x	x	x	x	x	x
Castor with directional locking 100mm	56-355	x	x	x	x	x	x
Castor with directional locking 125mm	56-359	x	x	x	x	x	x
Heel strap/Platform	58-328-1	x	x	x	x	x	
Shin support	56-352	x	x	x	x	x	
Manual brake, 2 hands, Std/Low/Ortho/Space/XL	56-339-1-0	x	x	x	x		x
Manual brake, 1 hands, Std/Low/Ortho/Space/XL	56-339-1-1	x	x	x	x		x
Manual brake, 2 hands, DB 2.0	56-339-2-0					x	
Manual brake, 1 hands, DB 2.0	56-339-2-1					x	
Soft basket incl bracket	56-389	x	x			x	x
Hand controller PLUS incl holder, Std/Low/Ortho/Space	58-375-1	x	x	x	x		
Hand controller PLUS incl holder, DB/Rise & Go DB	58-375-2					x	
Side support	56-337	x	x	x	x	x	x
Side support, PU	56-337-PU	x	x	x	x	x	x
Button kit FK, Up/Down, Normal speed, one htg*	58-387-1	x	x	x	x	x	
Button kit FK, Up/Down, High speed, one htg*	58-387-2	x	x	x	x	x	
Button kit FK, Widening, one htg*	58-387-3					x	
Button kit TK, Up/Down, Normal speed, two htg*	58-388-1	x	x	x	x	x	
Button kit TK, Up/Down, High speed, two htg*	58-388-2	x	x	x	x	x	
Button kit TK, Widening, two htg*	58-388-3					x	
Y cable for button kit – one per walker*	57-022-1	x	x	x	x	x	
Y cable for use with hand controller together with button kit	57-022-3	x	x	x	x	x	
Platform short, STD	56-333-STD, 56-333/SW-STD	x	x			x	
Platform short, DB	56-333-DB, 56-333/SW-DB					x	
Platform short, SPACE	56-333-SPACE, 56-333/SW-SPACE				x		
Platform long, STD	56-383-STD, 56-383/SW-STD	x	x				
Platform long, DB	56-383-DB, 56-383/SW-DB					x	
Platform long, SPACE	56-383-SPACE, 56-333/SW-SPACE				x		
Platform XL	56-386						x
Platform Aluminium short, Ortho	56-392			x			
Platform Aluminium long, Ortho	56-394			x			
Tip protection – backwards, Std/Low/Ortho/Space**	57-387	x	x	x	x		
Stirrup, Std/Rise & Go	56-331-1	x	x				
Tube holder incl bracket	56-336	x	x	x	x	x	x

* Tools required for drilling holes in frame when retrofitting.

** Can not be used with Manual brake.

Mover Aqua

Mover is a transfer platform developed to provide smooth, convenient transfer. It's easy to use and helps transfer patients safely and conveniently. Mover has a narrow base frame and double castors for easy manoeuvrability even in confined spaces. Mover has a stable platform and comfortable seat cushions, and thanks to constant eye contact with the carer, the user always feels comfortable and confident. The new Mover Aqua is specially designed to be used also in showers. PU cushions together with stainless solutions makes this possible. Hygiene management is improved as well.



Technical Specification

Part No.	Product	Max user weight	Width - external	Width - step	Height	Length	Seat height
53-301	Mover Aqua Överflyttningsplattform	180kg	63.5cm	38cm	107cm	94cm	83cm

Bure Rise & Go™

StandTall Walker with Power Rise

The Bure Rise & Go is a cost-effective walker enhanced with a patented power rise function. thanks to which it becomes a combined stand-up, walking and patient transfer aid all in one single product. Rise & Go is also available with electric walking frame widening. Flexible widening combined with the lower height above the walking frame enhances versatility regardless of the patient's situation in hospital or at home.



Step 1

The harness fits over the patient's lower back and bottom, the straps adjusted and the leg supports placed in the correct position.



Step 2

The patient holds on to the handles and the electrically driven power rise function begins. The patient follows a natural pattern of movements with the aid of the harness and the vertical lift action.



Step 3

On completion of the power rise, the knee supports are swung away and the patient is free to walk using the walker. Alternatively, patients place their feet on the platform and are ready to be moved on completion of the power rise.

Unique Power Rise Assistance

Bure Rise & Go saves time, space and money. It acts as a standup, mobility and walking aid in a single product, which makes the concept extremely cost effective.

The Bure Rise & Go means better work ergonomics for carers, trainers and anyone else working with patients. Thanks to the smart power rise assistance, standing up becomes a safe, confident and natural action that does not wear out the backs of health care personnel.

The product consists of a walker and its associated harness and straps. Harnesses are available in different sizes (S, M, L) and they are split at the rear to make e.g. WC visits easier.

When the patient stands up, the electric power rise function is employed and the attachment reduces the distance between the patient and the walker until the walker is in the standing position. The Bure Rise & Go reduces workloads and is an investment in personnel health and patient rehabilitation.

Rise & Go is also available with electric walking frame widening. Flexible widening combined with the lower height above the walking frame enhances versatility regardless of the patient's situation in hospital or at home.

Rise & Go DB

The Bure Rise & Go is a cost-effective walker enhanced with a patented power rise function. Thanks to the electric power rise function, Bure Rise & Go acts as a combined stand-up, mobility and walking aid all in a single product. Rise & Go is now also available with electric walking frame widening. Flexible widening combined with the lower height above the walking frame enhances versatility regardless of the patient's situation in hospital or at home.

Stable

The walker has anatomical cushions that provide relief for shoulders, arms and the neck and shift the focus to larger muscle groups such as leg and chest muscles. This improves stability and makes the walker easier to steer.

Flexible stepless adjustment

Electrically driven height adjustment makes it easy to pre-set the walker to the desired height. Once the patient is standing in position the height can be steplessly adjusted for comfort and the proper support for an optimal walking configuration.

Power Rise

Bure Rise & Go is a unique aid for assisting patients or users during the standing manoeuvre. The strain on personnel, and thus repetitive strain injuries, are minimised.

Waterproofing

All Bure Rise & Go electrical components have IP 65 international protection ratings and can therefore be used in wet spaces.

Low height

The low floor clearance minimises problems in getting up close to patients e.g. when they are sitting on their beds.

Open, reinforced design

The open design provides the same stability but with greater room for manoeuvre. The patient does not feel shut in and it makes assistance with standing up and dressing easier. Bure Rise & Go is also reinforced and extended for extra stability during the standing manoeuvre.

Easily reachable hand controller

The hand controller is located such that both of the carer's or user's hands can easily reach them.

Ergonomic handles

Ergonomically designed handles are steplessly adjustable in every direction for optimum individual comfort. This is extremely important for stroke patients who can thus reach their "usual" hand position.

Folding armrests

Bure Rise & Go's anatomically designed armrests can be folded out to provide the user with an easy means of reaching the handles during the standing manoeuvre.

Sustainable

The walker is designed to last. For example it has extra reinforcement bands around the arm rest cushions to prevent them from splitting from impacts to the side.

Unique power rise harness

The power rise harness is designed to reach as far down across the bottom as possible. This provides optimum support, which results in a natural standing action.

Shin support for the standing manoeuvre

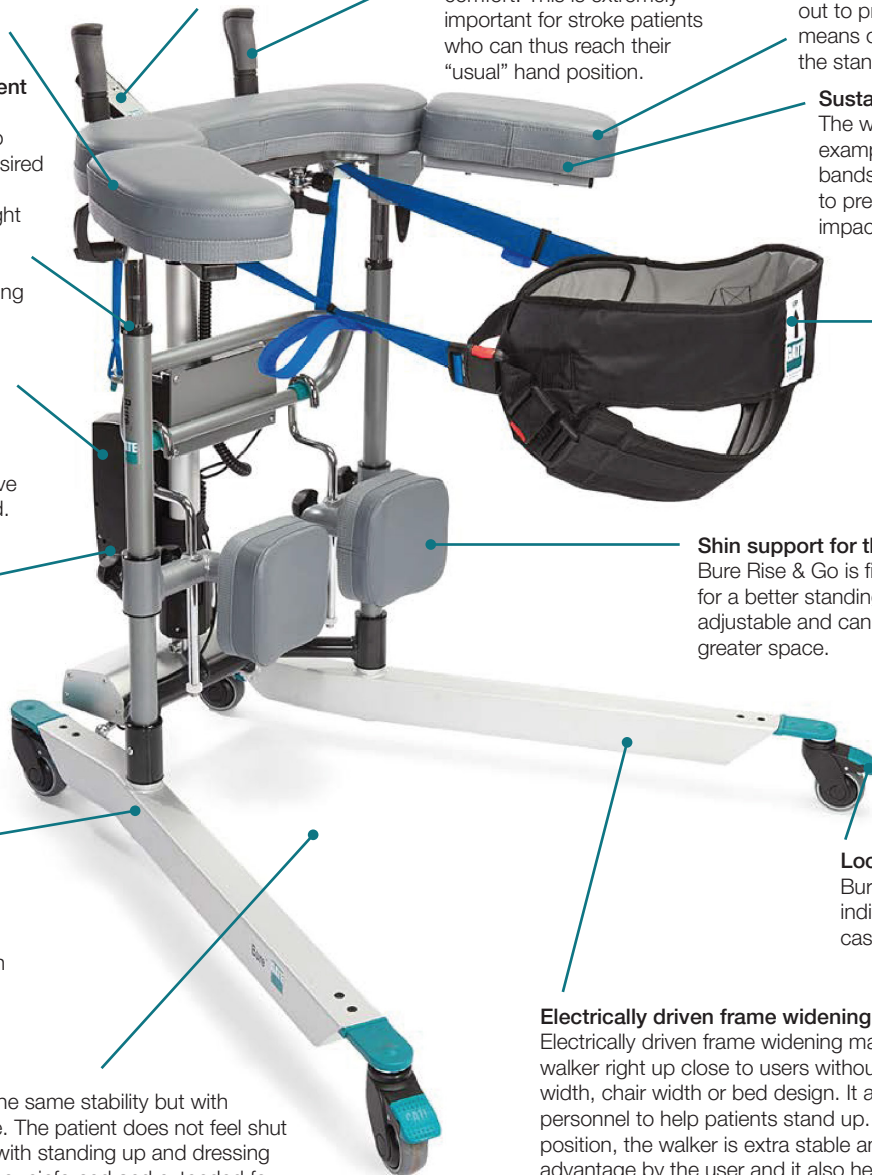
Bure Rise & Go is fitted with shin supports that make for a better standing manoeuvre; they are height adjustable and can be moved aside simply to create greater space.

Lockable castors

Bure Rise & Go has four individually lockable castors as standard.

Electrically driven frame widening

Electrically driven frame widening makes it easy to move the walker right up close to users without worrying about wheelchair width, chair width or bed design. It also makes it easier for personnel to help patients stand up. With the frame in its outer position, the walker is extra stable and can be used to best advantage by the user and it also helps patients who need extra walking space.



Technical Specification

Part No.	Product	Width, external	Max user weight	Length	Height	Armrest/internal dimension
56-309/75	Bure Rise & Go DB with electric frame widening, 75 mm	66-106cm	150kg	101cm	90-130cm	34-67cm
56-309	Bure Rise & Go DB with electric frame widening		150kg	101cm	95-135cm	34-67cm

* S=95-105cm, M=105-120cm, L=110-140cm, XL=130-160cm

Rise & Go

Bure Rise & Go is an all-round solution that saves space, time and money. Instead of purchasing both hoists and walkers it is probably often sufficient to acquire the flexible, cost effective Bure Rise & Go.

Stable

The walker has anatomical cushions that provide relief for shoulders, arms and the neck, and shift the focus to larger muscle groups such as leg and chest muscles. This improves stability and makes the walker easier to steer.

Flexible stepless adjustment

Electrically driven height adjustment makes it easy to pre-set the walker to the desired height. Once the patient is standing in position, the height can be steplessly adjusted for comfort and the proper support for an optimal walking configuration.

Power Rise

Bure Rise & Go is a unique aid for assisting patients or users during the standing manoeuvre. Personnel burdens, and thus repetitive strain injuries, are minimised.

Waterproofing

All Bure Rise & Go electrical components Bure Rise & Go have IP 65 international protection ratings and can therefore be used in wet spaces.

Stirrup for stability

To provide extra safety, Bure Rise & Go is fitted with a stirrup to ensure the walker remains stationary during the standing manoeuvre.

Open, reinforced design

The open design provides the same stability but with greater room for manoeuvre. The patient does not feel shut in and it makes assistance with standing up and dressing easier. Bure Rise & Go is also reinforced and extended for extra stability during the standing manoeuvre.

Easily reachable hand controller

The hand controller is located such that both of the carer's or user's hands can easily reach them.

Ergonomic handles

Ergonomically designed handles that are steplessly adjustable in every direction for optimum individual comfort. This is extremely important for stroke patients who can thus reach their "usual" hand position.

Folding armrests

Bure Rise & Go anatomically designed armrests can be folded out to provide the user with an easy means of reaching the handles during the standing manoeuvre.

Sustainable

The walker is designed to last. For example it has extra reinforcement bands around the arm rest cushions to prevent them from splitting from impacts to the side.

Unique power rise harness

The power rise harness is designed to reach as far down across the bottom as possible. This provides optimum support which results in a natural standing action.

Leg support for the standing manoeuvre

Bure Rise & Go is fitted with shin supports that make for a better standing manoeuvre; they are height adjustable and can be moved aside simply to create greater space.

Lockable castors

Bure Rise & Go has four individually lockable castors as standard.

Handbrakes and directionally lockable castors

Single or double hand brakes are available as accessories located so that the user can reach them from the walking position. The handbrake acts on the rear castors and the brake assembly also includes directional locks that make it easier for the user to stay on course when walking.



Technical Specification

Part No.	Product	Width, external	Max user weight	Length	Height	Armrest/internal dimension
56-316	Bure Rise & Go StandTall Walker	77cm	150kg	92cm	97-137cm	34-67cm
56-316/75	Bure Rise & Go StandTall Walker, 75 mm	77cm	150kg	92cm	92-132cm	34-67cm

* S=95-105cm, M=105-120cm, L=110-140cm, XL=130-160cm

Accessories

Drip holder with attachment

Provides great freedom for the patient to move around at home or on the ward. Supplied with attachment fitting.

Hand controller

GATE PLUS provides a number of extra functions such as multiple speeds and or service/ battery indicator in the hand controller.

PU foam armrest pads

PU foam armrest pads can be specified with the order or selected retroactively. The pads have no perforations or edges that accumulate dirt. An excellent alternative where high standards of hygiene management are demanded.

Soft basket with attachment

Basket with attachment has room for all the important stuff.



Stirrup

Acts as a counter weight and provides extra stability and safety when the walker is used for stand up assistance. Standard on Rise & GO. Not for use on walkers with lower frame widening.

Directionally lockable castor

125mm
100mm
75mm



Hand brake kit, one or two brakes

Adds a hand brake to the StandTall Walker so that the user is able to halt the walker's movement during walking exercises. Castors with directional locks included for extra safety/assistance. The one-handed brake is available left and right handed. When the handbrake kit is installed, base frame width is increased by +2cm.



Control for Raise/Lower and handle widening

We offer push button or rocker switch control. All functions can be operated this way. The accessory is also retrofittable and when necessary it can be used in combination with the regular hand controller.

Adjustable side supports

Prevents arms from sliding from arm rest cushions. Steplessly adjustable along the StandTall Walker's sides to further stabilize walking. The side support is also available in a PU version.

Oxygen bottle holder with bracket

Means patients are no longer confined to bed.

Shin supports

Leg supports make standing and mobility easier.

Platform

The platform is an excellent addition in cases where you want to use the walker for standing and mobility. Available in a short or long version.

Heel strap to platform

Castor with brake

125mm
100mm
75mm

Hand brake kit

Accessories



Drip rod complete with attachment



Side support/
Side support PU



Platform short/long



Platform, short/long,
castors



Handbrake kit DB



Handbrake kit
standard



Castor with brake
75, 100, 125 mm



Castor with directional
locking 75, 100, 125mm



Gait training Kit Multi. The
MULTI gait training kit
converts the stand-up harness
into a gait training harness.



Soft basket



Tube holder incl
bracket



Armrest cushions/
shin supports, PU



Handlebar



Heel strap/platform



Control/handle
- rocker switch



Control/handle
- push button switch



Tip protection -
backwards



Stirrup



Hand controller PLUS

Did you know that...



The new Rise & Go DB has lower ground clearance than previously which makes it significantly easier to fit under beds and thus get closer to the user. When fitted with 75 mm castors, Bure Rise & Go DB is especially low.



If you choose a walker with electrically adjustable widening you are also choosing increased flexibility. You can get close to the patient regardless of wheelchair or chair width. Also note that in most cases the platform will fit between a wheelchair's front castors.



The platform is an excellent addition when you want to use the walker for mobility, standing up and patient transits. The platform is narrow enough for use on most wheelchairs.

Quick List

Description	Part No.	Bure Rise & Go	Bure Rise & Go DB
Armrest pads/Knee support pads PU, Rise & Go (DB)	57-372	x	x
Drip rod complete with holder	56-338	x	x
Gait training kit Multi, Rise & Go (DB)	56-388-KIT	x	x
Castor with brake 75 mm	56-387	x	x
Castor with brake 100mm	56-358	x	x
Castor with brake 125mm	56-361	x	x
Castor with directional locking 75 mm	57-043	x	x
Castor with directional locking 100mm	56-355	x	x
Castor with directional locking 125mm	56-359	x	x
Heel strap/platform	58-328-1	x	x
Handlebar	57-391	x	x
Manual brake, 2 hands, Rise & Go	56-339-3-0	x	
Manual brake, 1 hands, Rise & Go	56-339-3-1	x	
Manual brake, 2 hands, Rise & Go DB	56-339-4-0		x
Manual brake, 1 hands, Rise & Go DB	56-339-4-1		x
Soft basket with bracket	56-389	x	x
Hand controller PLUS incl holder, Rise & Go	58-375-1	x	
Hand controller PLUS incl holder, DB/Rise & Go DB	58-375-2		x
Side supports	56-337	x	x
Side supports, PU	56-337-PU	x	x
Button kit FK, Up/Down, Normal speed, one htg*	58-387-1	x	x
Button kit FK, Up/Down, High speed, one htg*	58-387-2	x	x
Button kit FK, Widening, one htg*	58-387-3		x
Button kit TK, Up/Down, Normal speed, two htg*	58-388-1	x	x
Button kit TK, Up/Down, High speed, two htg*	58-388-2	x	x
Button kit TK, Widening, two htg*	58-388-3		x
Y cable for button kit – one per Walker*	57-022-1	x	x
Y cable for using hand controller together with the button kit	57-022-3	x	x
Platform short, STD	56-333-STD, 56-333/SW-STD	x	
Platform short, DB	56-333-DB, 56-333/SW-DB		x
Platform short, STD	56-383-STD, 56-383/SW-STD	x	
Platform long, DB	56-383-DB, 56-383/SW-DB		x
Tip protection, backwards, Std/Low/Ortho/Space**	57-387	x	
Stirrup, Std/Rise & Go	56-331-1	x	
Tube holder incl bracket	56-336	x	x
Stand-up harness MULTI with attachment straps (S, M, L, XL), Rise & Go (DB)	56-384-MULTI-S/M/L/XL	x	x

* Tools required for drilling holes in frame when retrofitting.

** Can not be used with Manual brake.

Bure Rise & Go™ StandTall Walker with Power Rise



- **BURE RISE & GO** is a complete solution that saves time space and money, which is truly cost effective.
- **SAFE, CONFIDENT** standing and mobility means a better working environment for health care personnel.
- **THE UNIQUE** power rise assistance provides a natural standing action that allows the patient to participate.
- **BURE RISE & GO** is a patented, protected proprietary GATE Rehab Development AB design
- **THE WALKER CAN** be used with a platform to make patient transits easy.
- **THE HARNESS IS WASHABLE** at 60°, and thanks to its split design, it is simple and flexible to wear even during visits to e.g. the WC.
- **BURE RISE & GO** is equipped with a smooth, steplessly variable electric height adjustment.
- Rise & Go is now also available with electric walking frame widening for flexibility regardless of user environment.oavsett brukarmiljö.



Gait training kit/Multi (Accessory)

Gait training harnesses are accessories used for increased safety when training using the Bure Rise & Go. The product's two inguinal straps and attachment hooks minimize the risk if the user becomes dizzy or similar.



EASY™

Hygiene chair

The advantage of GATE hygiene chairs is that they can be quickly adapted to suit the needs of every individual and situation. Adjust seat height electrically; angle the seat with the tilt function and customise it with accessories.

Designed to meet needs

GATE's new hygiene chairs have a unique pillar design for quick and easy seat height adjustment. EASY fits most people no matter how tall, and staff will not need to waste time and energy looking for a suitable hygiene chair for each situation. Easy is one of the first products that has been approved according to the new ISO 17966:2016.

Everyday life improved

EASY never compromises on user comfort and personnel ergonomics. Individually adaptable comfort and function makes the hygiene chair a much more pleasant experience for patient and healthcare staff alike. EASY is manufactured from corrosion-proof materials and can withstand high pressure washers (protection rating X5).

Best possible comfort

Users often sit in a chair for a long while when washing or taking a shower, and this can become very trying. EASY was created to provide extremely high comfort. The seated EASY user is able to assume a position for the best possible comfort. The hygiene chair quickly adapts to a personal fit with the aid of easily operated settings, and all models are height-adjustable. What's more, its ability to tilt helps take the weight off the user.

The seat and back are adapted for an upright posture that does not close the pelvis. The ergonomic design minimises pressure on the hips, tendons and blood vessels, while its rounded front edge contributes to a comfortable leg position.

The telescoping raise/lower pillars are unique to EASY. Its shape and function contribute to an open design that makes for easy use.

Which model suits your needs?

A broad selection of models makes possible the creation of a complete "fleet" of hygiene chairs. Because all models are suitable for most users regardless of their height or weight, the number of chairs and types of chair can be reduced allowing the addition of one or two more advanced models for demanding care situations.

Easy is available in three versions - with a conventional backstrap/necksupport (SoftBack Comfort), with Ribbons/PUR (SoftBack Flexi) or with a higher, padded water-repellant back with built-in neck support (HighBack).

The different versions are available in 2 different height configurations/seat height - STD (53-91 cm), LOW (50 cm-81 cm) and 2 different castor types - single castor (125 mm)/STD or double castor (100 mm)/Accessory. LOW is only available with double castors (100 mm).

AmfiBi XL is designed for the bigger, heavier patient.

EASY SoftBack

EASY is a well-designed hygiene stool with a great many advanced functions. The hygiene chair is designed with telescoping pillars to create as much space and flexibility as possible for care personnel. The chair is suitable for use in shower and toilet environments in care institutions and at home.

Adjustable back-strap

The soft, comfortable back-strap relieves pressure on bony areas. It is easily adjustable for best support and seat depth. Machine washable.

Individual fit

EASY has a neck support that is adjustable in height and from side to side for comfortable support and individual fit.



EASY SoftBack Flexi

Backrest Flexi

Our new backrest is actually three ribbons made of PUR which are designed to adapt to the back shape of the user. The ribbons are firmly attached to the frame and they can easily be cleaned/wiped off.

Integrated seat with opening to the rear (Accessory)

The seat's ergonomic design and flexible structure provide the best possible comfort the user, while the opening to the rear provides the carer with a natural, more hygienic working method. Standard delivery version, green plastic seat.

Plastic or metal

A plastic bedpan and guides are available as accessories for EASY. Note that guides are available in different versions to suit plastic or metal bedpans. See accessories.

Lockable armrests

The armrests can be flipped up or locked in their lower position. This is for safety when the chair is tilted.

Tilt function

EASY can be inclined approx 5 degrees forward and 30 degrees backward. This makes it easy to use when sitting down, getting up and for personal hygiene. The tilt function also improves the working environment and reduces strain on employees.

Swing-away, detachable footrests

The footrests can be swung away and detached and there is also a heel strap provided as standard to prevent the patient's foot from slipping from the footrest during tilting.

Adjustable seat height

An infinitely variable seat height from 53 all the way to 93 cm means the chair will fit every patient and reduce staff workload to a minimum.

Directionally locking castor

The right front castor is directionally lockable for easy manoeuvrability. The image shows a double castor (accessory).

Lockable castors

All castors are lockable except the directionally lockable castor. The image shows a double castor (accessory).

Pillars

The telescoping aluminium pillars have an open design that allows water and dirt to simply run through.



Easy control

Electrical height adjustment is via hard-wired controller with a high ingress protection rating (IP65) for excellent safety.

Technical Specification

Part No.	Product	Width, external	Max user weight	Seat height	Width, between armrests	Seat depth
56-270	EASY SoftBack Komfort	65cm	150kg	53-93cm	49cm	45cm
56-270/LOW	EASY SoftBack Komfort Low	65cm	150kg	50-81cm	49cm	45cm
56-272	EASY SoftBack Flexi	65cm	150kg	53-93cm	49cm	45cm

EASY HighBack

EASY™ in the high-back version (HB) is a development of the conventional concept using the back strap/neck support already available. This hygiene chair is fitted with a high, padded, water-repellent back complete with neck support (available in two versions). The high backrest provides soft yet stable support and its lower section is fitted with a pliant lumbar support for additional comfort. EASY HB is designed with telescoping pillars to create as much space and flexibility as possible for care personnel in the performance of their work. EASY is available with our new, soft Comfort seat with an opening at the rear for a more natural, hygienic working method.

Integrated neck rest

The integrated height-adjustable neck rest is available in two sizes, M and L.

High, upholstered backrest

The high backrest provides soft yet stable support. It is easy to clean and can be replaced as necessary.

Tilt function

EASY can be inclined 5 degrees forward and 30 degrees backward. This makes it easy to use when sitting down, getting up, and for personal hygiene. The tilt function also improves the working environment and reduces strain on employees.

Pillars

The telescoping aluminium pillars have an open design that allows water and dirt to simply run through.



Easy control

Electrical height adjustment is via hardwired controller with a high ingress protection rating (IP65) for excellent safety.

Lockable armrests

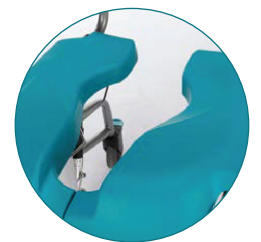
The armrests can be flipped up or locked in their lower position. This is for safety when the chair is tilted.

Pliant lumbar support

The lower section of the backrest is fitted with a pliant lumbar support for additional comfort.

Integrated seat with opening to the rear
(Accessory)

The seat's ergonomic design and flexible structure provide the best possible comfort the user, while the opening to the rear provides the carer with a natural, more hygienic working method. Standard delivery version, green plastic seat.



Swing-away, detachable footrests

Flip-up, swing-away, detachable footrests with a heel restraint to prevent the patient's foot from sliding off in the tilt position are fitted as standard.

Directionally locking castor

The right front castor is lockable for easy manoeuvrability.

Lockable castors

All castors are lockable except the directionally lockable castor.

Technical Specification

Part No.	Product	Width, external	Max user weight	Seat height	Width between armrests	Seat depth
56-271	EASY HB	65cm	150kg	53-93cm	49cm	45cm
56-271/LOW	EASY HB Low	68cm	150kg	50-81cm	49cm	45cm

Examples of possible parts combinations are shown below.

Amfibi XL

Amfibi XL is designed for the bigger, heavier patient and therefore provides extra space and strength and electrical height adjustment. Maximum user weight is 250 kg.

Plenty of room

Maximum user weight for the Amfibi XL is 250kg and seat depth is larger than standard. The hygiene chair has also been widened to 64 cm between armrests to provide extra room and good stability.

Durable materials

Manufactured from corrosion-proof materials.

Lockable armrests

Amfibi XL has armrests that can be flipped up and locked in position to make it easier for the patient to be of help with the transfer.

Built-in soft seat

The XL's seat and back are adapted for an upright posture that does not close the pelvis. The soft, ergonomic seat (PU) is standard and built in to the chair. It minimises pressure on the hips, tendons and blood vessels and is designed to suit both men and women.

Easy to clean

The seat is easy to remove and clean, while its rounded front edge contributes to a comfortable leg position.



Easy control

Electrical adjustment via a cabled remote which is sealed to a high protection class (IP65) for optimal safety.

Adjustable back-strap

Adjustable backrest The soft, comfortable back-strap relieves pressure on bony areas. It is easily adjustable for best support and seat depth. Machine washable.

Directionally locking/lockable castors

One of the castors can be locked directionally for improved safety during transit. The other castors are lockable.

Swing-away, detachable footrests

The footrests flip-up, swing-away and are easily detachable.

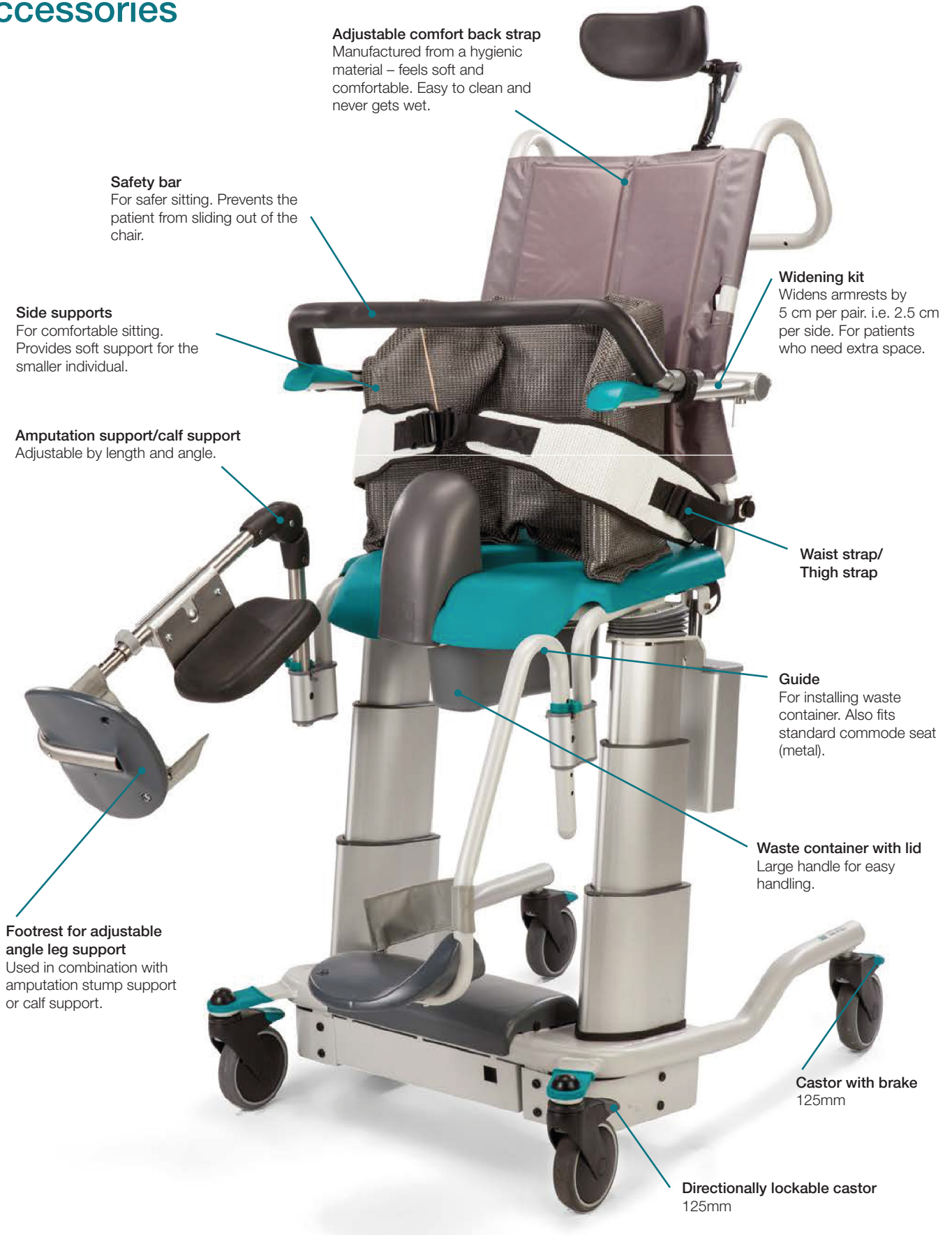
Electric height adjustment

Amfibi XL has a unique pillar design for quick and easy seat height adjustment. The seat can be raised by up to 81 cm from its lowest position and thus requires minimum effort from care personnel.

Technical Specification

Part No.	Product	Width, external	Max user weight	Seat height	Width between armrests	Seat depth
56-204	Amfibi XL	79cm	250kg	55-81cm	67cm	49cm

Accessories



Adjustable comfort back strap

Manufactured from a hygienic material – feels soft and comfortable. Easy to clean and never gets wet.

Safety bar

For safer sitting. Prevents the patient from sliding out of the chair.

Side supports

For comfortable sitting. Provides soft support for the smaller individual.

Amputation support/calf support

Adjustable by length and angle.

Widening kit

Widens armrests by 5 cm per pair. i.e. 2.5 cm per side. For patients who need extra space.

Waist strap/ Thigh strap

Guide

For installing waste container. Also fits standard commode seat (metal).

Waste container with lid

Large handle for easy handling.

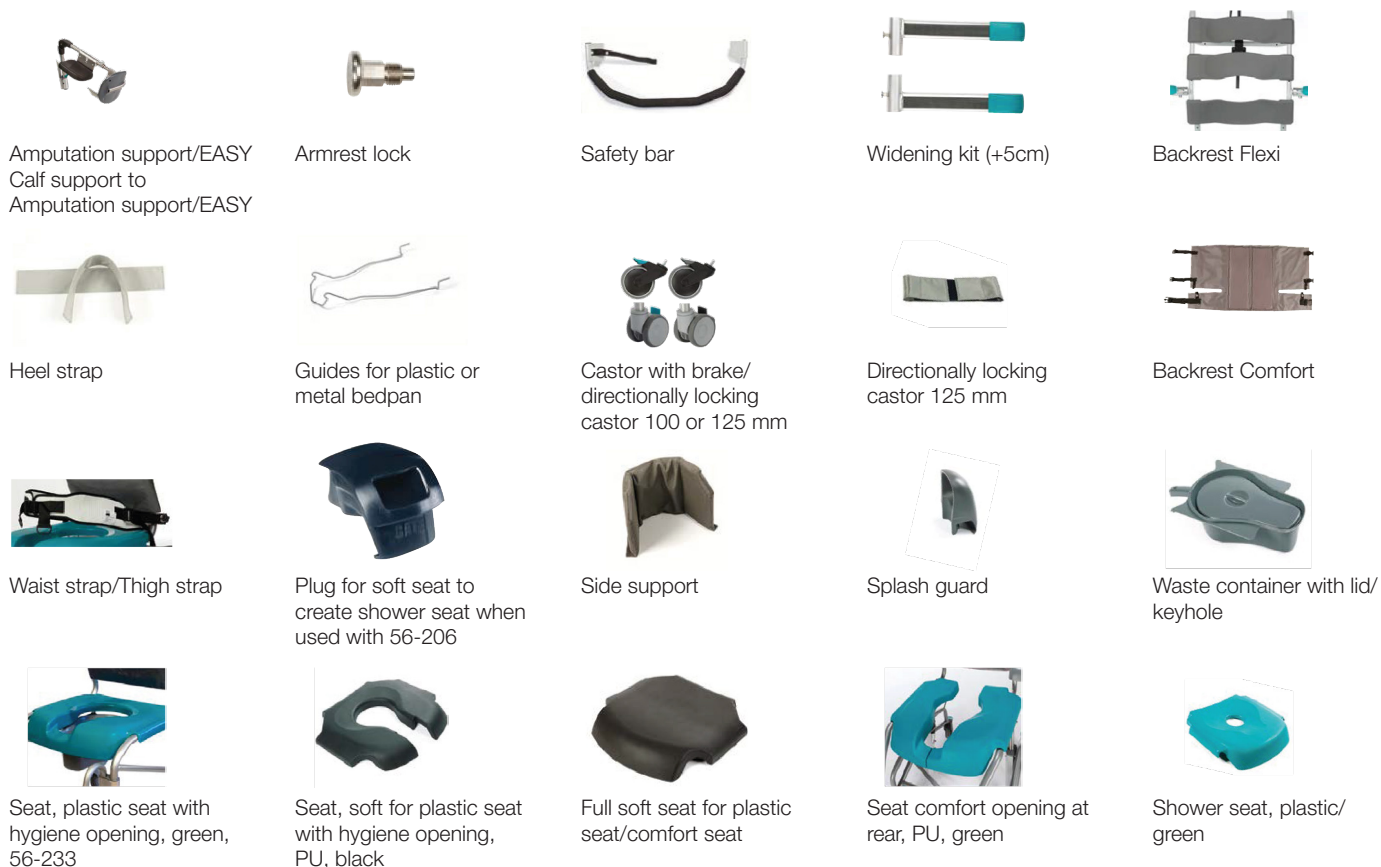
Footrest for adjustable angle leg support

Used in combination with amputation stump support or calf support.

Castor with brake
125mm

Directionally lockable castor
125mm

PRODUCT CATALOGUE



Description	Part No.	EASY SB	EASY HB	Amfibi XL
Amputation support Left, XL	56-228-L			x
Amputation support Right, XL	56-228-R			x
Amputation support/Calf support Left EASY	56-259-L	x	x	
Amputation support/Calf support Right, EASY	56-259-R	x	x	
Armrest locking	57-288-2	x	x	
Backrest/Comfort EASY SB	56-258-EASY	x		
Backrest/Comfort Amfibi XL	56-258-XL			x
Backrest Flex, EASY SB	56-262	x		
Calf support provides extra support for the lower leg	56-225	x	x	x
Calf support Right, XL	56-227-L			x
Calf support Left, XL	56-227-R			x
Castor with full brake 125mm	56-361	x	x	
Directionally locking castor 125mm	56-359	x	x	
Castor/double castor with full brake 100mm	56-238	x	x	
Castor/double castor with directional lock 100mm	56-239	x	x	
Footrest for adjustable angle leg support	56-257-L/-R			x
Footrest for Amputation support /Calf support (left/right) EASY	56-260-L/-R	x	x	
Footrest left/right, EASY	56-261-L/-R	x	x	
Guides for plastic or metal bedpans	56-218	x	x	x
Heel strap Amfibi XL	56-220			x
Heel strap EASY	56-220-EASY	x	x	
Plug for soft seat to create shower seat when used with 56-206	56-232	x	x	
Safety bar EASY	56-212-EASY	x	x	
Safety bar XL	56-212-XL			x
Seat, shower, plastic/green	56-205	x	x	
Seat, comfort opening at rear, PU, green	56-234	x	x	
Seat, soft for plastic seat with hygiene opening, PU, black	56-206	x	x	
Seat, soft, whole for plastic seat/comfort seat	56-236	x	x	
Seat, plastic seat with hygiene opening, green	56-233	x	x	
Side support	56-216	x	x	x
Splash guard	56-213	x	x	x
Waist strap/Thigh strap	56-217	x	x	x
Waste container with lid/keyshape	56-209	x	x	x
Widening kit (+5cm) EASY SB	56-221-EASYSB	x		
Widening kit (+5cm) EASYTM HB	56-221-EASYHB		x	



A DIRECT HEALTHCARE GROUP COMPANY

Gate Rehab Development AB
Industrigatan 2
Reftele, Sverige
S-330 21

T: 0371-318 00
F: 0371-318 01
E: info@gaterd.se

LIT-00119 Issue 1
Date: January 2020

GATERD.SE