



A DIRECT HEALTHCARE GROUP COMPANY

Hygiene Chairs

Product Catalogue



We do better

We have a long tradition of product and concept development at GATE. We create new solutions, new possibilities and new opportunities for users and care personnel alike by applying new technologies to our passion for design and nursing. We help create a safer, brighter world.

At GATE, we always endeavor to be at the leading edge when it comes to design and innovation for healthcare aids. All of GATE's proprietary products have that little something extra – a component, a solution or materials that no other manufacturer has.

"...our products are your best investment"

When we develop new products we create products that have their own intrinsic value - made using modern materials and designs with innovative – and sometimes unexpected – solutions. Our vision is for our products to be your best investment.

GATE'S personnel has decades of experience in the rehabilitation aids industry and share a common passion – to make a difference, create a better quality of life and new possibilities for managers, specialists, care personnel and users alike.

Let us explain why a GATE product is such a great investment.

GATE

GATE was founded in 2004 and initially worked mostly with the development and sales of rollators and simpler products for home care. Over time, GATE developed and today it works with the innovation and development of its own walkers and hygiene chairs.

GATE has its headquarters and warehouse in Reftele, Småland in a Swedish region characterised by a distinct entrepreneurial spirit and the power of innovation. Today, GATE strives to create new possibilities for a better, safer day-to-day world for users and care personnel alike.

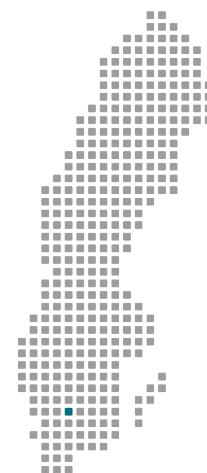


Table of Contents

Introduction	03
Hygiene Chairs	04
EASY™ SoftBack	05
EASY™ HighBack	06
Amfibi XL	07
Accessories	08



EASY™

Hygiene chair

The advantage of GATE hygiene chairs is that they can be quickly adapted to suit the needs of every individual and situation. Adjust seat height electrically; angle the seat with the tilt function and customise it with accessories.

Designed to meet needs

GATE's new hygiene chairs have a unique pillar design for quick and easy seat height adjustment. EASY fits most people no matter how tall, and staff will not need to waste time and energy looking for a suitable hygiene chair for each situation. Easy is one of the first products that has been approved according to the new ISO 17966:2016.

Everyday life improved

EASY never compromises on user comfort and personnel ergonomics. Individually adaptable comfort and function makes the hygiene chair a much more pleasant experience for patient and healthcare staff alike. EASY is manufactured from corrosion-proof materials and can withstand high pressure washers (protection rating X5).

Best possible comfort

Users often sit in a chair for a long while when washing or taking a shower, and this can become very trying. EASY was created to provide extremely high comfort. The seated EASY user is able to assume a position for the best possible comfort. The hygiene chair quickly adapts to a personal fit with the aid of easily operated settings, and all models are height-adjustable. What's more, its ability to tilt helps take the weight off the user.

The seat and back are adapted for an upright posture that does not close the pelvis. The ergonomic design minimises pressure on the hips, tendons and blood vessels, while its rounded front edge contributes to a comfortable leg position.

The telescoping raise/lower pillars are unique to EASY. Its shape and function contribute to an open design that makes for easy use.

Which model suits your needs?

A broad selection of models makes possible the creation of a complete "fleet" of hygiene chairs. Because all models are suitable for most users regardless of their height or weight, the number of chairs and types of chair can be reduced allowing the addition of one or two more advanced models for demanding care situations.

Easy is available in three versions - with a conventional backstrap/necksupport (SoftBack Comfort), with Ribbons/PUR (SoftBack Flexi) or with a higher, padded water-repellant back with built-in neck support (HighBack).

The different versions are available in 2 different height configurations/seat height - STD (53-91 cm), LOW (50 cm-81 cm) and 2 different castor types - single castor (125 mm)/STD or double castor (100 mm)/Accessory. LOW is only available with double castors (100 mm).

AmfiBi XL is designed for the bigger, heavier patient.

EASY SoftBack

EASY is a well-designed hygiene stool with a great many advanced functions. The hygiene chair is designed with telescoping pillars to create as much space and flexibility as possible for care personnel. The chair is suitable for use in shower and toilet environments in care institutions and at home.



EASY SoftBack Flexi

Individual fit

EASY has a neck support that is adjustable in height and from side to side for comfortable support and individual fit.

Adjustable back-strap

The soft, comfortable back-strap relieves pressure on bony areas. It is easily adjustable for best support and seat depth. Machine washable.

Integrated seat with opening to the rear (Accessory)

The seat's ergonomic design and flexible structure provide the best possible comfort the user, while the opening to the rear provides the carer with a natural, more hygienic working method. Standard delivery version, green plastic seat.

Plastic or metal

A plastic bedpan and guides are available as accessories for EASY. Note that guides are available in different versions to suit plastic or metal bedpans. See accessories.

Swing-away, detachable footrests

The footrests can be swung away and detached and there is also a heel strap provided as standard to prevent the patient's foot from slipping from the footrest during tilting.

Adjustable seat height

An infinitely variable seat height from 53 all the way to 93 cm means the chair will fit every patient and reduce staff workload to a minimum.

Directionally locking castor

The right front castor is directionally lockable for easy manoeuvrability. The image shows a double castor (accessory).

Lockable castors

All castors are lockable except the directionally lockable castor. The image shows a double castor (accessory).

Pillars

The telescoping aluminium pillars have an open design that allows water and dirt to simply run through.

Backrest Flexi

Our new backrest is actually three ribbons made of PUR which are designed to adapt to the back shape of the user. The ribbons are firmly attached to the frame and they can easily be cleaned/wiped off.

Lockable armrests

The armrests can be flipped up or locked in their lower position. This is for safety when the chair is tilted.

Tilt function

EASY can be inclined approx 5 degrees forward and 30 degrees backward. This makes it easy to use when sitting down, getting up and for personal hygiene. The tilt function also improves the working environment and reduces strain on employees.

Easy control

Electrical height adjustment is via hard-wired controller with a high ingress protection rating (IP65) for excellent safety.



Technical Specification

Part No.	Product	Width, external	Max user weight	Seat height	Width, between armrests	Seat depth
56-270	EASY SoftBack Komfort	65cm	150kg	53-93cm	49cm	45cm
56-270/LOW	EASY SoftBack Komfort Low	65cm	150kg	50-81cm	49cm	45cm
56-272	EASY SoftBack Flexi	65cm	150kg	53-93cm	49cm	45cm

EASY HighBack

EASY™ in the high-back version (HB) is a development of the conventional concept using the back strap/neck support already available. This hygiene chair is fitted with a high, padded, water-repellent back complete with neck support (available in two versions). The high backrest provides soft yet stable support and its lower section is fitted with a pliant lumbar support for additional comfort. EASY HB is designed with telescoping pillars to create as much space and flexibility as possible for care personnel in the performance of their work. EASY is available with our new, soft Comfort seat with an opening at the rear for a more natural, hygienic working method.

Integrated neck rest

The integrated height-adjustable neck rest is available in two sizes, M and L.

High, upholstered backrest

The high backrest provides soft yet stable support. It is easy to clean and can be replaced as necessary.

Tilt function

EASY can be inclined 5 degrees forward and 30 degrees backward. This makes it easy to use when sitting down, getting up, and for personal hygiene. The tilt function also improves the working environment and reduces strain on employees.

Pillars

The telescoping aluminium pillars have an open design that allows water and dirt to simply run through.

Swing-away, detachable footrests

Flip-up, swing-away, detachable footrests with a heel restraint to prevent the patient's foot from sliding off in the tilt position are fitted as standard.

Directionally locking castor

The right front castor is lockable for easy manoeuvrability.



Easy control

Electrical height adjustment is via hardwired controller with a high ingress protection rating (IP65) for excellent safety.

Lockable armrests

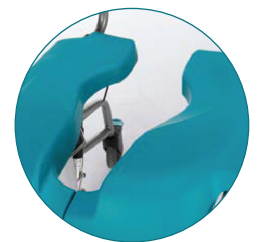
The armrests can be flipped up or locked in their lower position. This is for safety when the chair is tilted.

Pliant lumbar support

The lower section of the backrest is fitted with a pliant lumbar support for additional comfort.

Integrated seat with opening to the rear
(Accessory)

The seat's ergonomic design and flexible structure provide the best possible comfort the user, while the opening to the rear provides the carer with a natural, more hygienic working method. Standard delivery version, green plastic seat.



Lockable castors

All castors are lockable except the directionally lockable castor.

Technical Specification

Part No.	Product	Width, external	Max user weight	Seat height	Width between armrests	Seat depth
56-271	EASY HB	65cm	150kg	53-93cm	49cm	45cm
56-271/LOW	EASY HB Low	68cm	150kg	50-81cm	49cm	45cm

Examples of possible parts combinations are shown below.

Amfibi XL

Amfibi XL is designed for the bigger, heavier patient and therefore provides extra space and strength and electrical height adjustment. Maximum user weight is 250 kg.

Plenty of room

Maximum user weight for the Amfibi XL is 250kg and seat depth is larger than standard. The hygiene chair has also been widened to 64 cm between armrests to provide extra room and good stability.

Durable materials

Manufactured from corrosion-proof materials.

Lockable armrests

Amfibi XL has armrests that can be flipped up and locked in position to make it easier for the patient to be of help with the transfer.

Built-in soft seat

The XL's seat and back are adapted for an upright posture that does not close the pelvis. The soft, ergonomic seat (PU) is standard and built in to the chair. It minimises pressure on the hips, tendons and blood vessels and is designed to suit both men and women.

Easy to clean

The seat is easy to remove and clean, while its rounded front edge contributes to a comfortable leg position.



Easy control

Electrical adjustment via a cabled remote which is sealed to a high protection class (IP65) for optimal safety.

Adjustable back-strap

Adjustable backrest The soft, comfortable back-strap relieves pressure on bony areas. It is easily adjustable for best support and seat depth. Machine washable.

Directionally locking/lockable castors

One of the castors can be locked directionally for improved safety during transit. The other castors are lockable.

Swing-away, detachable footrests

The footrests flip-up, swing-away and are easily detachable.

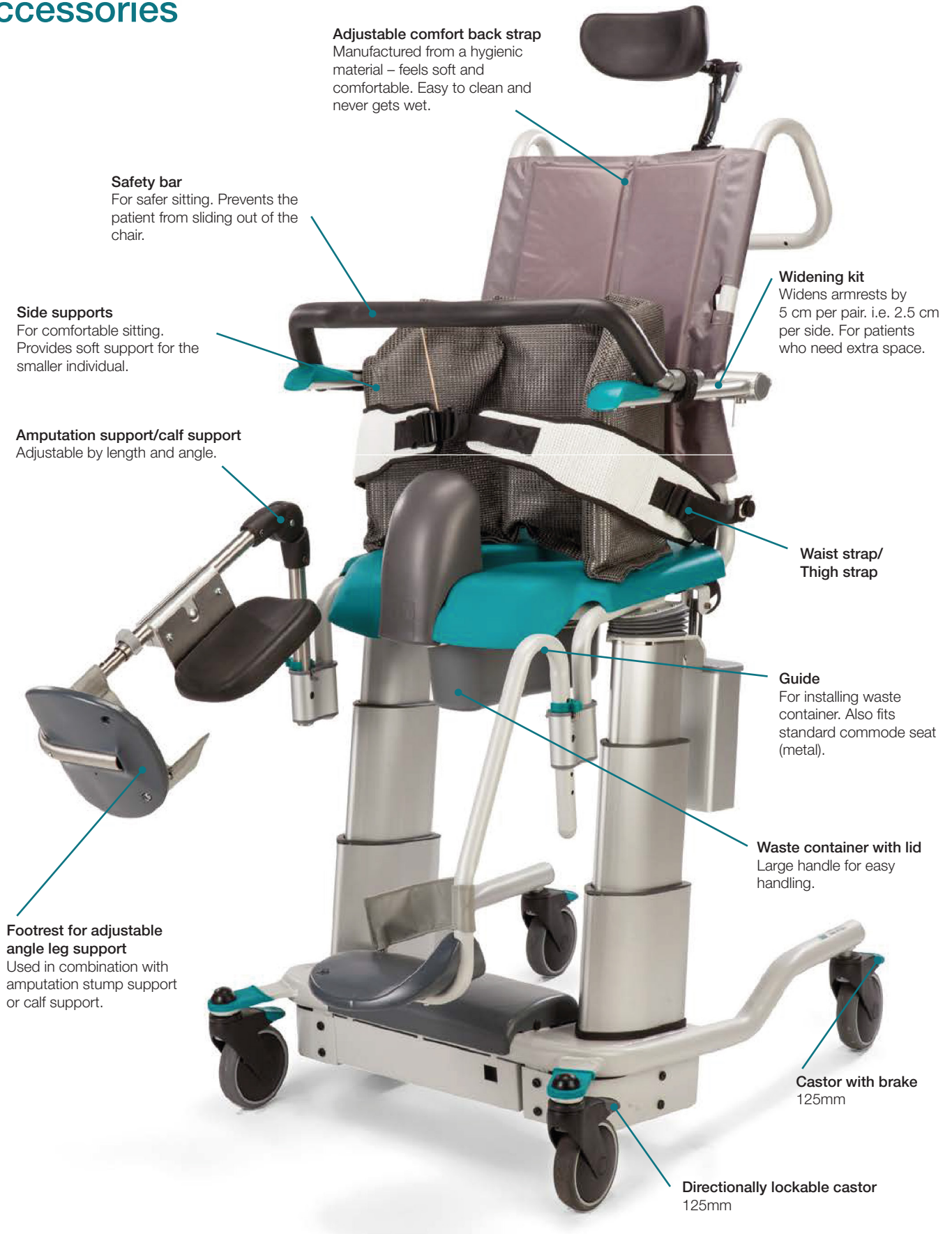
Electric height adjustment

Amfibi XL has a unique pillar design for quick and easy seat height adjustment. The seat can be raised by up to 81 cm from its lowest position and thus requires minimum effort from care personnel.

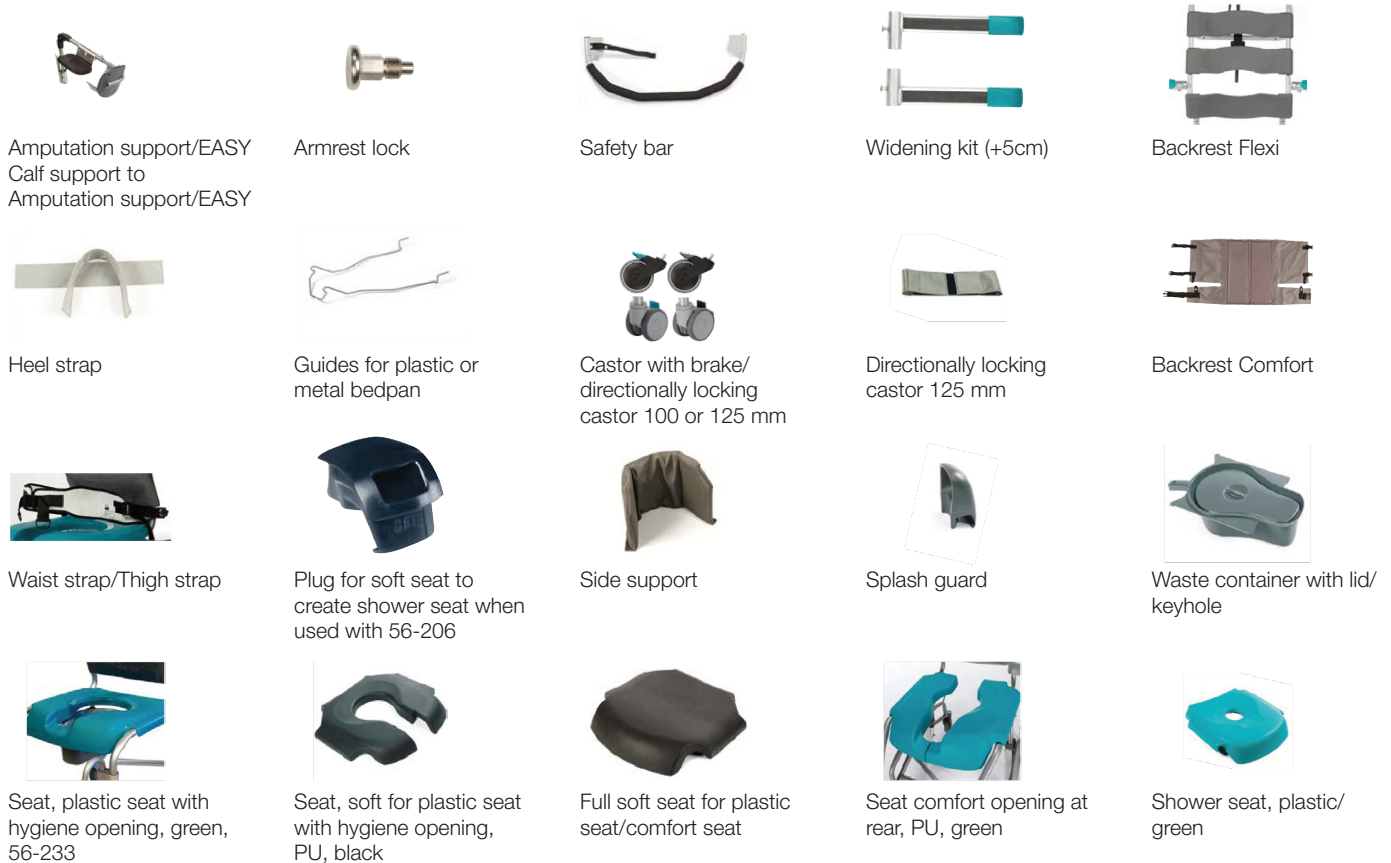
Technical Specification

Part No.	Product	Width, external	Max user weight	Seat height	Width between armrests	Seat depth
56-204	Amfibi XL	79cm	250kg	55-81cm	67cm	49cm

Accessories



PRODUCT CATALOGUE



Description	Part No.	EASY SB	EASY HB	Amfibi XL
Amputation support Left, XL	56-228-L			x
Amputation support Right, XL	56-228-R			x
Amputation support/Calf support Left EASY	56-259-L	x	x	
Amputation support/Calf support Right, EASY	56-259-R	x	x	
Armrest locking	57-288-2	x	x	
Backrest/Comfort EASY SB	56-258-EASY	x		
Backrest/Comfort Amfibi XL	56-258-XL			x
Backrest Flex, EASY SB	56-262	x		
Calf support provides extra support for the lower leg	56-225	x	x	x
Calf support Right, XL	56-227-L			x
Calf support Left, XL	56-227-R			x
Castor with full brake 125mm	56-361	x	x	
Directionally locking castor 125mm	56-359	x	x	
Castor/double castor with full brake 100mm	56-238	x	x	
Castor/double castor with directional lock 100mm	56-239	x	x	
Footrest for adjustable angle leg support	56-257-L/-R			x
Footrest for Amputation support /Calf support (left/right) EASY	56-260-L/-R	x	x	
Footrest left/right, EASY	56-261-L/-R	x	x	
Guides for plastic or metal bedpans	56-218	x	x	x
Heel strap Amfibi XL	56-220			x
Heel strap EASY	56-220-EASY	x	x	
Plug for soft seat to create shower seat when used with 56-206	56-232	x	x	
Safety bar EASY	56-212-EASY	x	x	
Safety bar XL	56-212-XL			x
Seat, shower, plastic/green	56-205	x	x	
Seat, comfort opening at rear, PU, green	56-234	x	x	
Seat, soft for plastic seat with hygiene opening, PU, black	56-206	x	x	
Seat, soft, whole for plastic seat/comfort seat	56-236	x	x	
Seat, plastic seat with hygiene opening, green	56-233	x	x	
Side support	56-216	x	x	x
Splash guard	56-213	x	x	x
Waist strap/Thigh strap	56-217	x	x	x
Waste container with lid/keyshape	56-209	x	x	x
Widening kit (+5cm) EASY SB	56-221-EASYSB	x		
Widening kit (+5cm) EASYTM HB	56-221-EASYHB		x	



A DIRECT HEALTHCARE GROUP COMPANY

Gate Rehab Development AB
Industrigatan 2
Reftele, Sverige
S-330 21

T: 0371-318 00
F: 0371-318 01
E: info@gaterd.se

LIT-00123 Issue 1
Date: January 2020

GATERD.SE