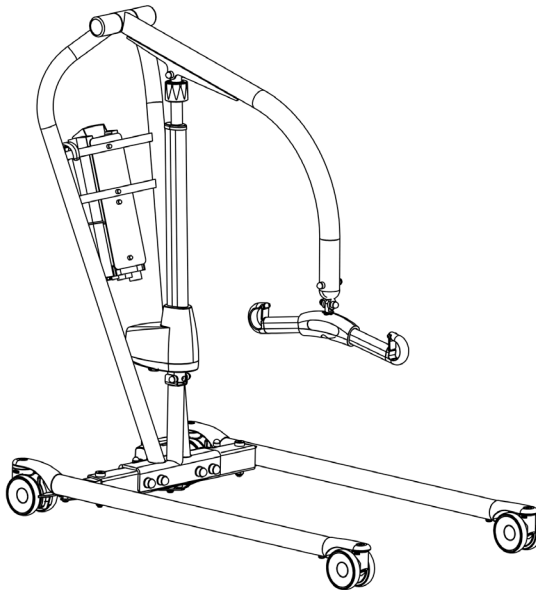


Valid from serial number:
660320001



REF
6060003

SWL: 230 kg/505 lbs

Safety information

Visual inspection

Inspect lift functions regularly. Check to ensure that material is free from damage.

Before use

Ensure that the product is correctly assembled.

Check slingbar connection and safety latch function.

Check lift and base-width movement.

Check to ensure that the actuator is correctly installed.

Always read the user manual

Keep the user manual where it is accessible to users of the product.

Do not leave the user unattended during a lifting situation.

The lift unit may only be used by persons who have received instruction in the operation of the lift unit.

Table of contents

Assembly

-Final inspection	3
-------------------------	---

Using the product

- Important information	4
-------------------------------	---

- Trouble-shooting	4
--------------------------	---

Exploded view and components	5-6
---	------------

Spare part list	11-12
------------------------------	--------------

Changing spare parts	13-14
-----------------------------------	--------------

Periodic inspection - protocol	15
---	-----------

- Description for periodic inspection	16
---	----

- Periodic inspection - instruction	17-18
---	-------

Maintenance	19
--------------------------	-----------

Symbols	20
----------------------	-----------

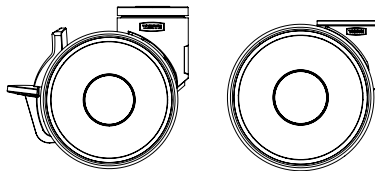
Technical information	20
------------------------------------	-----------

- Dimensions	21-22
--------------------	-------

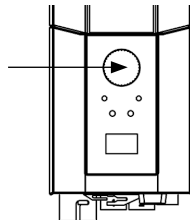
Assembly

Final inspection

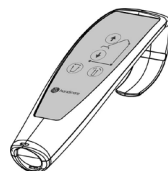
Check to ensure that no parts have been left in the packaging.
Inspect the lift for signs of wear and damage.
Check all four castor wheels and castor wheel locks.
Check all connections and fixtures including screws and bolts.



Check the emergency stop function by activating the emergency stop button, and then pressing either the up or down button. If nothing happens when the up or down buttons are pressed, the emergency stop is functioning properly.



Grasp the hand control, press the up button and run the lift arm all the way up. Then, press the down button and run the lift arm all the way down.
Test base-width adjustment function. Press the button for base-width adjustment to widen the base fully, and then press the other button to narrow the base again.



Test lift function by lifting a person (not a user) using an approved sling. At the same time, check the emergency lowering function with someone on the lift. See section on Emergency lowering.

If the lift is functioning correctly, connect the charger and check to ensure that the charging lamp on the control box lights up.

NOTE!

Before the lift is used for the first time:

- it must be charged for at least 4 hours. See section on charging batteries.
- the control box service counter needs to be reset. To reset the service counters press both lift buttons on the hand control at the same time for 5 seconds.




An audio signal will indicate that the timer has been reset.



Keep the user manual where it is accessible to users of the product.

Using the product

Important Information

- The lift must be assembled according to the instructions provided by Handicare.
- The lift may only be used indoors and on a level floor.
- Lifting accessories must be properly fitted and tested in relation to the user's needs and functional ability.
- Do not leave the user unattended during a transfer situation. 
- Under no circumstances may the safe working load be exceeded. See section on Safe Working Load.
- Never move the lift by pulling on the actuator! 
- The lift must not be used or immersed in or under water including showering.
- The lift should not be left / stored in a high humidity environment.
- The lift must not be charged in a wet room.
- To ensure optimal function, the lift must be inspected regularly. See section on other maintenance details.
- Warranty applies only if repairs or alterations are made to the product by personnel who are authorized by Handicare.
- Using lifting accessories other than those approved can entail a risk.
- Note that there is a pinch point between the manual emergency lowering mechanism and the lift arm when the lift arm is in its highest and lowest positions. 
- Verify that all lifting accessories hang vertically and can move freely.

Trouble shooting

If the lift or base-width adjustment cannot be activated, check the following:

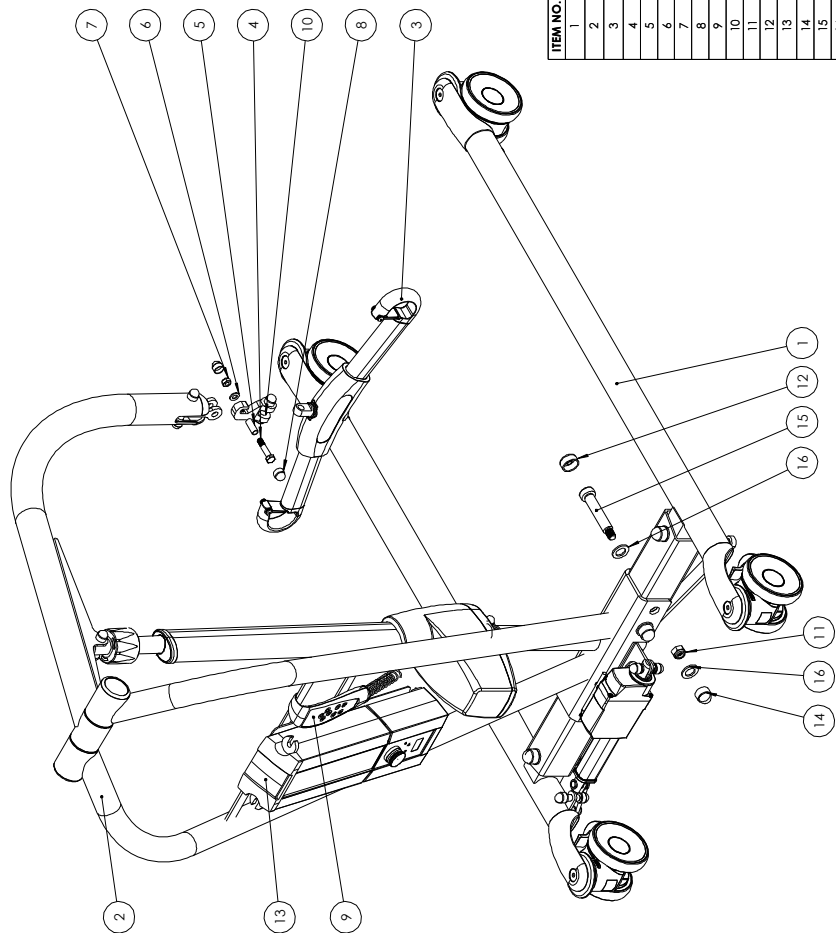
- That the emergency stop button is not pressed in.
- That all cables are properly and securely connected. Pull out the contact and plug it in again firmly.
- That battery charging is not in progress.
- That the battery is charged.

If the lift is not working properly, contact your dealer.

If the lift makes unusual noises:

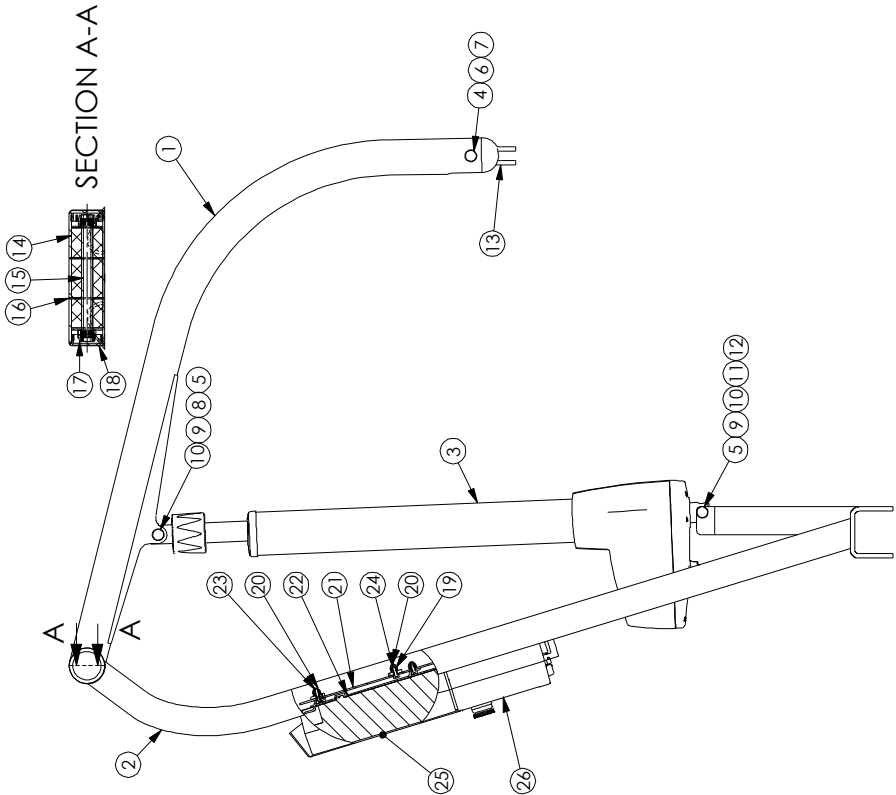
- Try to determine the source of the sound. Take the lift out of operation and contact your dealer.

Exploded view and components



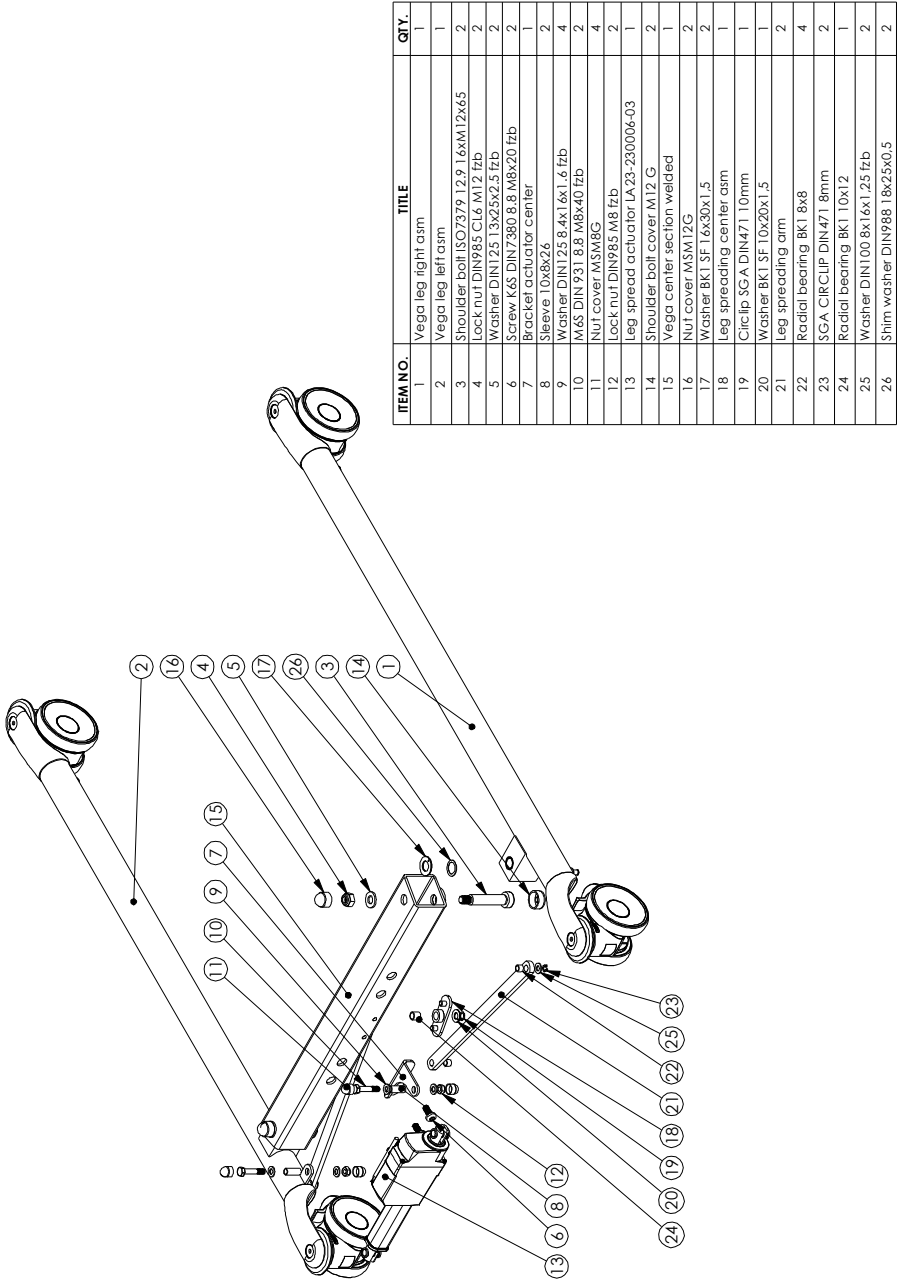
ITEM NO.	TITLE	QTY.
1	Base Vega505EE	1
2	Vega mast	1
3	SlingBar M frame	1
4	M6S DIN 931 8.8 M8x40 fzb	1
5	Sleeve 10x8x26	1
6	Washer DIN125 8.4x1.6x1.6 fzb	1
7	Lock nut DIN985 M8 fzb	1
8	Nut cover MSM8C	2
9	H18.9021-01 (Hand control/HB32, 4 button)	1
10	Switch hook	1
11	Lock nut DIN985 CL6 M12 fzb	4
12	Shoulder Bolt cover M12 G	4
13	Battery cover Link# 0094062	1
14	Nut cover MSM12C	4
15	Shoulder bolt ISO7399 12.9 16xM12x75	4
16	Washer DIN433 17x28x2.5 A4	8

Exploded view and components



ITEM NO.	TITLE	QTY.
1	Vega lifting arm complete	1
2	Vega mast welded	1
3	Vega LA44 - 443204-53300A0	1
4	Screw M45 DIN931 8.8 M8x6.5 fzb	1
5	Nut cover MSM6G	5
6	Sleeve 10x8x50	1
7	Bushing teflon C10610-1012	1
8	Shoulder ball ISO7379 [DIN6101] [2.7] 10xM8x35	1
9	Lock nut DIN985 M8 fzb	3
10	Washer DIN 125 8.4x16x1.6 fzb	5
11	Sleeve 10x8x37	1
12	Screw M45 DIN931 8.8 M8x50 fzb	1
13	Link V	1
14	Vega bushing mast	2
15	Vega lifting arm shaft	1
16	Washer nylon 50x17x2	2
17	lock nut DIN985 C16 M16 fzb	2
18	Vega end cover mast	2
19	lock nut DIN985 C16 M5 fzb	4
20	Nut cover MSM6G	4
21	Vega control box cover CBUC	1
22	link MBU2 incl. screws	1
23	Screw M45 DIN7984 M5x12 fzb	1
24	Screw M45 DIN7984 M5x16 fzb	3
25	BA J1 030-00 (Battery box CB J grey, BA J1)	1
26	CBJ045-00 (Controlbox CBJ/Case w/display LA44)	1

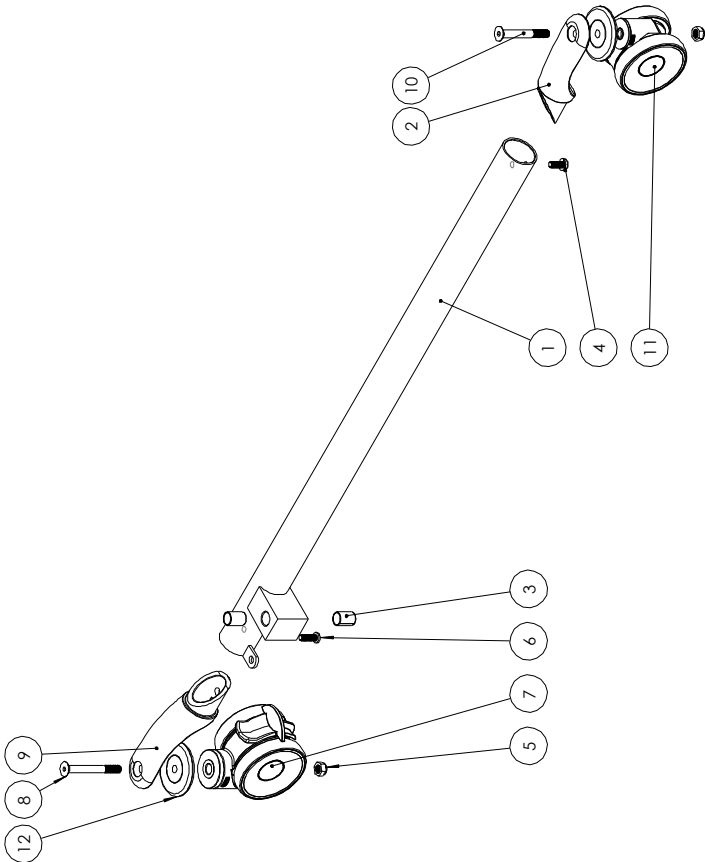
Exploded view and components



ITEM NO.	TITLE	QTY.
1	Vega leg right asm	1
2	Vega leg left asm	1
3	Shoulder bolt ISO7379 12.9 1.6xM12x6.5	2
4	Lock nut DIN985 Cl.6 M12 fzB	2
5	Washer DIN125 1.3x2.5x2.5 fzB	2
6	Screw K65 DIN7380 8.8 M8x20 fzB	2
7	Bracket actuator center	1
8	Sleeve 10x8x26	2
9	Washer DIN125 8.4x1.6x1.6 fzB	4
10	M65 DIN 931 8.8 M8x40 fzB	2
11	Nut cover MSM8G	4
12	Lock nut DIN985 M8 fzB	2
13	Leg spread actuator LA-23-2300006-03	1
14	Shoulder bolt cover M12 G	2
15	Vega center section welded	1
16	Nut cover MSM12G	2
17	Washer BK1 SF 1.6x30x1.5	2
18	Leg spreading center asm	1
19	Circlip SGA DIN471 10mm	1
20	Washer BK1 SF 10x20x1.5	1
21	Leg spreading arm	2
22	Radial bearing BK1 8x8	4
23	SGA CIRCLIP DIN471 8mm	2
24	Radial bearing BK1 10x12	1
25	Washer DIN100 8x16x1.25 fzB	2
26	Shim washer DIN988 1.8x2.5x0.5	2

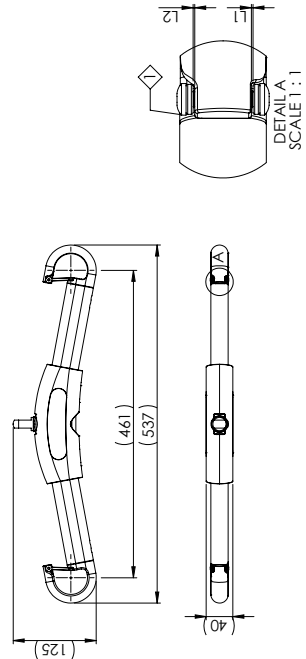
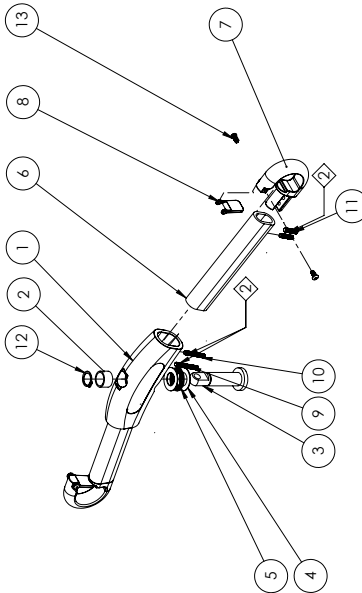
Exploded view and components

ITEM NO.	TITLE	QTY.
1	Vega leg left welded	1
2	Front Fork Vega 03	1
3	Radial bearing BK1 16x25	2
4	Screw K65 DIN7380 8.8 M8x20 fzb	1
5	Lock nut J DIN 985 CL6 M10 FZB	2
6	Screw K65 ISO7380_10.9_M8x25_fzb	1
7	Rear wheel 100mm	1
8	Screw MF65 DIN7991 8.8 M10x90 fzb	1
9	Rear fork 125 mm	1
10	Screw MF65 DIN7991 8.8 M10x80 fzb	1
11	Front wheel 100mm	1
12	Wheel bumper	2



Exploded view and components

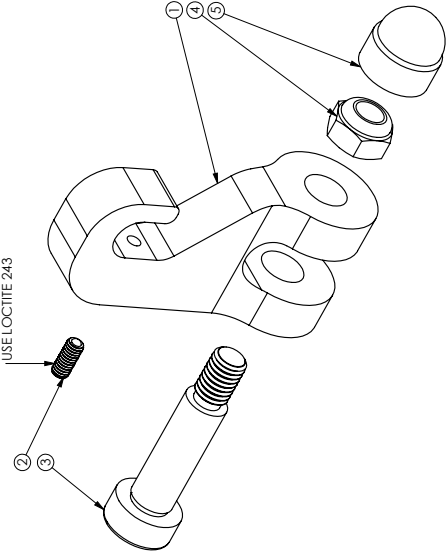
ITEM NO.	TITLE	QTY.
1	Mainframe SlingBar	1
2	Slide bearing 20x24x15 PA66	1
3	Support pin	1
4	Needle roller thrust bearing washer AS 2035	2
5	Needle bearing AXK 2035	1
6	Tube for SlingBar	2
7	Hook for SlingBar	2
8	Cargo barrier	2
9	Screw P6SS DIN931 8.8 M6x45 fzb	2
10	Screw P6SS DIN931 8.8 M6x40 fzb	2
11	Screw P6SS DIN931 8.8 M6x25 fzb	4
12	Circlep SGA 20 DIN 471	1
13	Screw K6S ISO7380 8.8 M5x12 fzb	4




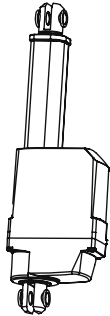


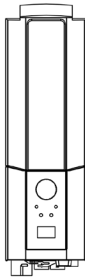
- ⚠ Screw no. 13 meets the opposite screw of the center. (L1 = L2).
- ⚠ Screw no. 9, 10 and 11 are applied with 4Nm and Loctite 2701.





Exploded view and components

ITEM NO.	TITLE	QTY.
1	Swift hook	1
2	Spring plunger GN615 K M4x9	1
3	Shoulder bolt ISO7379 (DIN610) 12.9 10xM8x30	1
4	Lock nut DIN985 M8 fzb	1
5	Nut cover MSM85	1



Spare part list

Article no.	Product	Unit	Components	Images
80100093	Actuator mast Vega LA44	1 set	1 x Actuator LA44 2 x Locking nut M8	
80100056	Actuator base LA23	1 set	1 x Actuator Vega LA23 1 x Motor cable for LA23 2 x Locking nut M8 0,25 x Cardboard	
80100001	Front castor 100 mm	1 set	1 x Front castor 1 x Locking nut M10	
80100002	Rear castor 100 mm	1 set	1 x Rear castor 1 x Locking nut M10	
80100169	Control box CBJC Vega505EE	1 pce	1 x Control box	
80100057	Battery CBJ	1 pce	1 x Battery	
80100161	Batterybox CBJ BAJ1	1pce	1 x Batterybox	

Article no.	Product	Unit	Components	Images
80100156	Hand control HB32-4	1 pce	1 x Hand control	
80100058	Sling bar lock, for Alu sling bar	1 set	10 x Cargo barrier 20 x Screw M5x12	
80100048	Cable for charger EU	1 pce	1 x Charger cable	
80100046	Cable for charger UK	1 pce	1 x Charger cable	
80100045	Cable for charger US	1 pce	1 x Charger cable	
80100047	Cable for charger AU	1 pce	1 x Charger cable	
80100157	Turning handle Vega (serial no.: 660310478-660310489)	1 pce	1 x Turning handle	
80100074	Bumper kit 80 mm	1 set	4 x Rubber bumper	

Changing spare parts

80100001, 80100002 Front/rear castor 100 mm

Using an Allen key, remove the screw that holds the castor in place. Replace the castor, apply Loctite 2701 or similar, and then secure the castor with the screw.

80100045, -46, -47, -48, -52, -59, -60, -61

Connect the charger cable to the control box, and then plug it into a wall socket.

80100051 Control box CBJH

Activate the emergency stop, and then disconnect the actuator and hand control. Remove the two long screws and remove the control box. Install the new control box and secure it with the two screws. Connect the actuator and control box.

80100055, 80100056 Actuator leg spreading

Connect the motor cable to the actuator.

Run the actuator until the legs are drawn in fully. Activate emergency stop. Disconnect the actuator from the control box. Loosen and remove the screw that holds the actuator to the leg. Remove the screw covers and loosen the screw and nut. Remove the actuator.

Install the new actuator; start by securing the end that is secured to the leg. Use the accompanying lock nut, and then secure the end that is connected to the base of the mobile lift. Use the accompanying lock nut. Replace the screw covers. Connect the actuator to the control box.

80100057 Battery CBJ

Remove the lift battery and remove the screws. Disconnect the battery contacts and remove the batteries. Install the new batteries in the battery box and connect the contacts. Place the cover on the box and secure it with the screws.

Note! The battery must be charged for at least 4 hours before it is used for the first time.

80100058 Slingbar lock for slingbar alu

Remove the screws on either side of the safety latch and remove it. Install the new safety latch and secure it with the two accompanying M5x12 screws. Position the safety latch, so that the bevelled side is facing in towards the lift hook.

80100062 Hand control 4-button Linak CBJH

Activate the emergency stop, and then disconnect the hand control. Connect the new hand control.

80100065 Front castor 75 mm

80100066 Rear castor 75 mm

Using an Allen key, remove the screw. Replace the castor, securing it with the screw and accompanying lock nut.

80100068 Hanger Strap lock, for steel slingbar

Remove the safety latch by pulling the ring until one side of it is freed from the slingbar, and then remove the other side. Insert the new safety latch into the hole on one side of the slingbar, and then into the other hole. Ensure that the safety latch snaps securely into place; it must be able to move freely in the holes.

80100074 Bumper kit

Remove the castors and remove the bumper. Install the new bumper and castors.

80100074 Bumper kit

Montera loss hjulen och ta bort den gamla bumpern, montera dit den nya tillsammans med hjulet.

80100093 Actuator mast Vega LA44

Sänk lyftarmen till sitt nedersta läge. Aktivera nödstoppen. Koppla ur ställdonet ur kontrollboxen. Montera loss ställdonets övre del genom att ta bort täckhattarna och skruva loss skruven och muttern, lossa ställdonets nedre del på samma sätt. Lyft lyftarmen och tag loss ställdonet. Montera det nya ställdonet. Börja med att passa in den nedre delen, lyft lyftarmen och passa in den övre delen. Montera fast ställdonet med befintliga skruvar och de nya medföljande låsmuttrarna. Montera dit täckhattarna och koppla in ställdonet i kontrollboxen.

80100156 Hand control HB32-4

Aktivera nödstoppen och koppla ur handkontrollen, koppla in den nya handkontrollen.

80100157 Turning handle Vega (serial No: 660310478 - 660310489)

Använd knopparna för att avlägsna skruvarna. montera de nya skruvarna med knopparna.

80100161 Battery box CBJ Grey BAJ1

Tag loss befintligt batteri genom att lyfta det rakt upp ur hållaren på kontrollboxen. Montera det nya batteriet i hållaren. Kom ihåg att batteriet måste laddas minst fyra timmar innan första användning.

80100169 Control box CBJC Vega505EE

Aktivera nödstoppen och koppla ur ställdon och handkontroll. Ta bort batteriet, skruva ur de två genomgående skruvarna och tag bort kontrollboxen. Montera dit den nya kontrollboxen genom att skruva fast den med de två skruvarna. Sätt tillbaka batteriet och koppla in ställdon och handkontroll igen.

Periodic inspection - protocol

Lift type:
s/n:
Version:
Prod. year:
Sling bar id.:

Contract no:
Name:
Address:

Situation of use: Home Institution Other

Comments: 1. Attention 2. Correct 3. Do not use!

Base:

--	--	--

 Check for visible damage

Check:

A		Castor
---	--	--------

B		Brakes
---	--	--------

C		Screws
---	--	--------

Mast:

--	--	--

 Inspect the mast

Check:

D		Screws
---	--	--------

E		Lift arm hardware etc
---	--	-----------------------

F		Link
---	--	------

G		Slingbar and the function of the safety latches
---	--	---

H		Mast actuator
---	--	---------------

I		Battery and cable installations
---	--	---------------------------------

J		Hand control
---	--	--------------

K		Emergency stop
---	--	----------------

L		Emergency lowering
---	--	--------------------

M		Charging
---	--	----------

N		Product label
---	--	---------------

Test of safe working load:

--	--	--

 Safe working load test mast

--	--	--

 Safe working load test base

--	--	--

 Mechanical emergency lowering

Accessories:

Documentation:

--	--	--

 Instructions / manuals

Controll box:

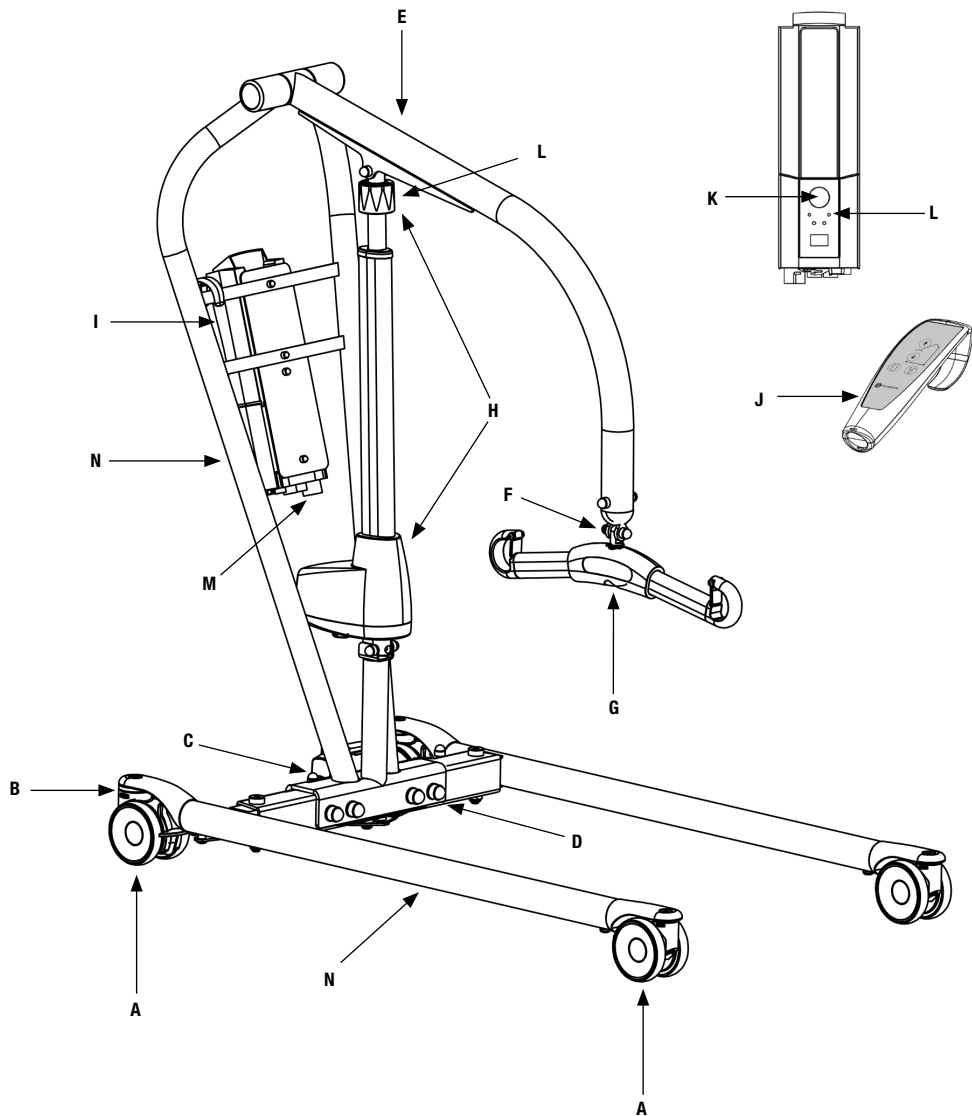
--	--	--

 Reset the control box service counter

Date:
Load test weight:

Serviced by:

Description for periodic inspection



Periodic inspection - instruction

Base

-Check the base for visible damage to the surfaces, finish, etc.

Castors

-Roll the lift unloaded on the floor, check that the castors roll and turn freely.

-Check that the castor fasteners are tight.

Brakes

-Lock the brakes. Check that the castors do not turn when the lift is pushed.

Check the legspreading actuator

-Check the legspreading actuator for visible damage to the surfaces, finish, etc.

-Check screws, bolts and links etc.

Mast

-Check the mast for visible damage to the surfaces, finish etc.

-Check screws, nuts, bolts etc.

Screws

-Check screws, and listen for peculiar noises and vibrations.

Liftarm, hardware

-Check the liftarm for visible damage to the surfaces, finish etc.

-Check screws, nuts, bolts etc.

Link

-Check the link, slingbar to mast, hardware and covers.

-Check screws, bolts and links etc.

Slingbar and safety latch function

-Check to ensure that there is no visible wear or damage.

- Check the function of the safety latches.

Mast actuator

-Verify that the upper and lower actuator fasteners to the mast are tight.

-Visual inspection.

-Check of abnormal noise level.

Battery and cable installations

- Check battery and electrical cable.
- Verify that all cables are properly inserted.

Controlbox

- Verify that all functions on the control panel are working

Handcontrol

- Verify that all functions on the handset are working.

Emergency stop

- Verify that the lift does not operate when emergency stop is pressed in.

Emergency lowering

- Verify the function of emergency lowering.

Charging

- Verify that charging is operating. Yellow lamp on the controllbox should light up when charging.

Product label

- Check the serial number so that the label is there and readable. Note the serial number on the protocol.

Test of safe working load

Mast safe working load

- Run the lift with safe working load, all the way up and down, listen for peculiar noises and vibrations.

Base safe working load

- Widen the base with safe working load, listen for peculiar noises and vibrations.

Accessories

- Check the accessories to the lift.

Documentation

- Check that the manual is available and up-to-date.

**To reset the service counters press both lift buttons on the hand control at the same time for 5 seconds.
An audio signal will indicate that the timer has been reset.**



Maintenance

The lift must undergo thorough inspection at least once per year. Inspection must be performed by authorized personnel and in accordance with Handicare's service manual.

Repairs and maintenance may only be done by authorized personnel using original spare parts.



Used batteries are to be left at the nearest recycling station. Used batteries can also be returned to Handicare or a Handicare dealer for recycling.

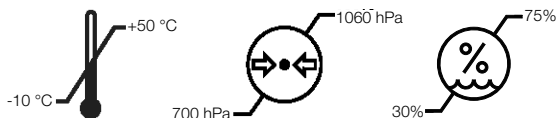
Cleaning/disinfection

If necessary, clean the lift with warm water or a soap solution and check that the castors are free from dirt and hair. Do not use cleaning agents containing phenol or chlorine, as this could damage the aluminium and the plastic materials. If disinfection is needed, 70 % ethanol, 45 % isopropanol or similar should be used.

Storage and transportation

If the lift is not to be used for some time or e.g., during transport, we recommend that the emergency stop button be pressed in. The hoist should be transported and stored in -10°C to $+50^{\circ}\text{C}$ and in normal humidity, 30% -75 %.








The air pressure should be between 700 and 1060 hPa. Let the hoist reach room temperature before the batteries are charged or the hoist is used.



Service agreements

Handicare offers the possibility of service agreements for maintenance and regular testing of your mobile lift. Contact your local Handicare representative.

Symbols

	Read user manual
	May not be discarded in domestic waste
	The product complies with the requirements of the Medical Devices Directive 93/42/EEC.
	Type B, according to the degree of protection against electric shock.
	The device is intended for indoor use.
	Class II equipment
	Always read the user manual

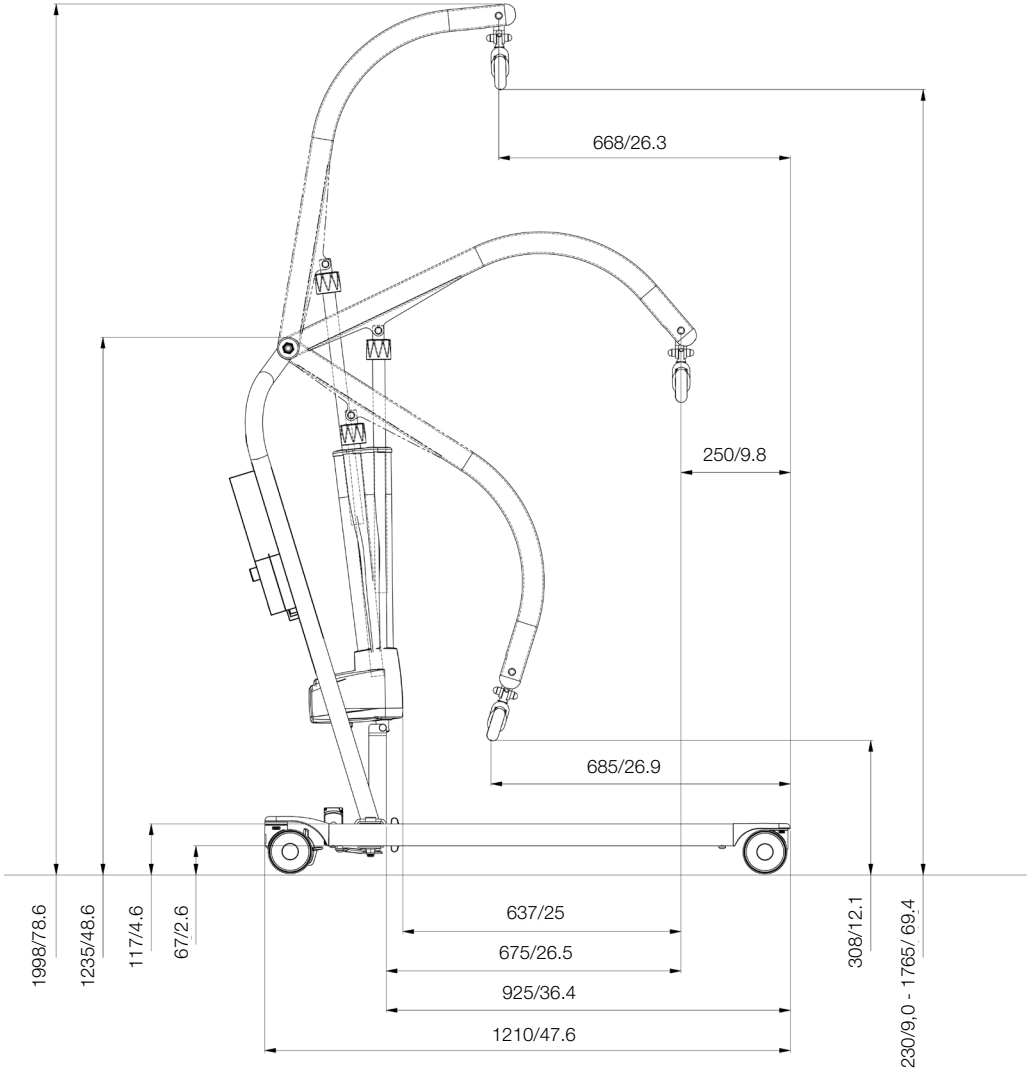
Technical Information

Lifting speed:	37 mm/s without load.
Batteries:	Two 12V, 2.9 Ah valve-regulated, sealed, lead accumulator (gel-type batteries)
Charger:	Max. 400mA
Motor (mast):	DC 24V, 9,7 Amp. IP X4. Operationtime: 10% at maximum continuous operation of 2 minutes, maximum 5 cycles per minute. Push: 10 000N.
Motor (base):	DC 24V, 2.2 Amp. IP X4. Operationtime: 10% at maximum continuous operation of 2 minutes, maximum 5 cycles per minute. Push: 1500N.
Sound level:	With load: upwards: 43 dB(A) downwards: 44 dB(A).
Material	Steel
Emergency lowering:	Manual and electrical
Castors:	Front 4", 100 mm, back 4", 100mm
Weight:	42,8 kg
IP class:	IP X4
Expected lifetime:	10 years
Operating forces buttons on handset:	4 N
Max. load:	230 kg / 505lbs

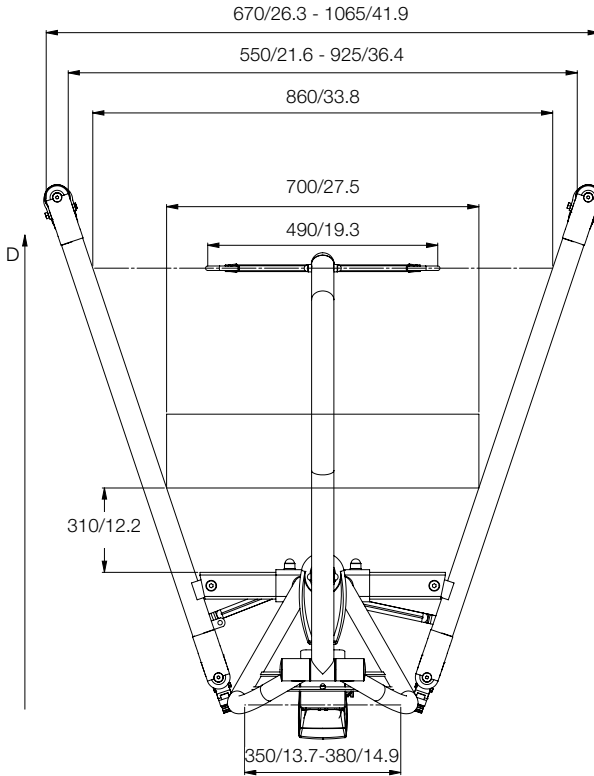
Medical Device Class I. The product complies with the requirements of the Medical Devices Directive 93/42/EEC.

Dimensions

All measurement are in mm/inch
Tolerance +/- 5 mm/ 0.2"



All measurement are in mm/inch
Tolerance +/- 5 mm/ 0.2"



- Turning radius is 615 mm/24.2 inch
- The total weight of the lift is 42,8 kg
- The weight of the heaviest part is 25,8 kg
- D is movement in forward direction
- Outer dimension 650 mm

Making everyday life easier

More than 30 years in the service of simplicity

Handicare's unique easy transfer concept is the market's widest and most complete range of clever, easy-to-use and safe assistive devices for all types of patient transfers and manual handling requirements.

The philosophy behind the concept is focused on the prevention and reduction of occupational injuries while allowing users to experience a greater sense of independence and dignity.

Through a unique combination of training and a complete range of efficient transfer aids, we offer improvement of both work environment and quality of care and, at the same time, achieves significant cost savings.

Designed and produced by Handicare

For more than 30 years, Handicare has offered simple solutions for great results, and an easier everyday life for both users and personnel in the care sector. During 1984-2010 under the name of RoMedic and, as of January 1, 2011 under the name of Handicare.

Handicare offers solutions and support to increase the independence of disabled or elderly people as well as to improve the convenience of those who are caring for them.

The Handicare Group is one of the leading healthcare companies in Europe with own manufacturing organizations and sales companies in Norway, Sweden, Denmark, Germany, the Netherlands, Great Britain, France, China, Canada and the USA. Handicare's products are also distributed by partners in more than 40 countries worldwide.

Our wide range of high-quality products includes a complete easy transfer system and other patient handling aids, stairlifts, car adaptations and bathing and toileting products.



handicare

Handicare AB
Torshamnsgatan 35
SE-164 40 Kista, SWEDEN
Tel: +46 (0)8-557 62 200
Fax: +46 (0)8-557 62 299
E-mail: info@handicare.se
www.handicare.com