



Moving Health Forward

Pressure Ulcer Prevention Product Range

Hybrid Mattresses

Static Mattresses

Dynamic Mattresses

Anti-deformation Mattresses

Cushions

Positioning Accessories



Moving Health Forward

Vision

To advance the health of individuals with affected movement, utilising innovative and proven ways to enhance the certainty of care needed today and the care we plan to provide for tomorrow.

Mission

DHG constantly support our healthcare partners, and the people whose healthcare needs they serve, by providing solutions that improve the vital connections between movement and health. All leading to the best recovery outcomes and healthy independence in daily living.

Our Story

DHG is a global medical device company that supports efforts to move health forward by delivering innovative and leading solutions for individuals whose lives are impacted by reduced movement.

We strive to constantly support our healthcare partners, and the people whose healthcare needs they serve, working to keep improving the vital connections between movement and health, enabling accelerated recovery and healthy independence in daily living.

At DHG, we are passionate to work in close collaboration with healthcare professionals to enhance outcomes, lower the cost of healthcare, deliver efficiencies, and expand access to our solutions.

Our Brands



Pressure Ulcer Prevention

DHG specialises in the manufacturing of pressure ulcer prevention solutions with a comprehensive portfolio of innovative, award-winning products including mattresses, cushions and overlays.

With significant experience in the provision of clinically proven, value for money solutions, customers benefit from a combination of innovative pressure care technologies, designed in partnership with leading clinical and healthcare establishments.

In 2016, Direct Healthcare Services' Intelligent Pressure Care Management won the prestigious Queen's Award for Enterprise in Innovation following the introduction of the Dyna-Form® Mercury Advance; a keystone hybrid mattress.



Safe Moving & Handling

DHG's SystemRoMedic range has extensive heritage in the safe movement and handling of users across the spectrum of care environments. Providing solutions for lifting systems and manual transfer aids, the SystemRoMedic portfolio enables safer working ergonomics for the carer, whilst providing clinical effectiveness for the user. The clinical focus of the SystemRoMedic looks to release more time back to care by providing a highly-experienced, trained moving & handling team who can assess for the most appropriate moving, handling, specialist seating, in-bed or out-of-bed solution to provide effective care.



Specialist Therapies

DHG's Specialist Therapies portfolio offers advanced technologies for use with avoidable harms.

Our Negative Pressure Wound Therapy (NPWT) offers intuitive, simple-to-use, cost effective solutions for the accelerated healing of chronic wounds.

With the knowledge that Venous Thromboembolism (VTE) is a global, life-threatening issue, DHG offer Intermittent Pneumatic Compression (IPC) solutions for use in the prevention of Pulmonary Embolism.



Bathroom Safety

Renowned for more than 80 years, DHG's Linido bathroom safety solutions provide increased independence, safety and comfort in bathrooms, showers and toilet areas across private and public environments, as well as in hospitals. DHG offers a wide range of safe, practical, durable and ergonomic aids with modern design; creating accessible, safe and aesthetic bathrooms.

Our bathroom safety products are extensively tested for their functionality, including safety testing as well as ergonomic use and comfort, to ensure to comfort of safety every day. The complete range provide users in any bathroom or toilet situation with as much autonomy as possible.



Rental & Service Solutions

Through DHG's Nightingale brand, we have over 20 years' experience in ad-hoc or contracted rental and servicing solutions that enable a focus on patient care across any operational budget. We offer a 24/7/365 rental service providing a range of pressure area care solutions, beds for acute and community environments, safe moving & handling equipment, specialist seating, and bariatric care equipment; ensuring that your patient receives the right care at the right time. To facilitate easier choice, we have designed a number of packages focusing on early discharge, single-handed care, rehabilitation, or capacity pressures.

With a network of nationwide, ISO 13485 accredited rental and service centres, we work closely with healthcare professionals to ensure our solutions are reliable, safe and effective. Our solutions are delivered by a highly experienced Technical Service team, who will provide on-site support and training during the delivery process.

Our ProServe® Service Solutions provide ISO 13485 compliant servicing options for the wide range of products your hospital or equipment service have on site. We offer a range of technical service packages designed to suit the needs of our customers in today's ever changing healthcare environment.

Our History



Sunday Times Fast Track 100

DHS recognised as the 17th fastest growing business in the UK, attributed to an innovation approach in supporting NHS Trusts.

Innovative New Product Design Award

The Static Air HZ wins the New Product Award at the Insider Media Business and Education Partnership Awards.

Intelligent Academy

Accredited training provider.

Asia Pacific offices opened in Perth, Australia



INVESTORS IN PEOPLE

2009

2013

2014

2015

2016

Direct Healthcare Services founded

Designing and manufacturing 'best value' pressure area care solutions.



NHS Collaboration Award

Recognised by MediWales for the Dyna-Form® Static Air HZ mattress which conforms to a profiling bed with no loss of mattress length to avoid the problem of heel pressure ulcers.

DHS announces partnership with the Welsh Wound Innovation Centre, a global centre of excellence in wound prevention and treatment.

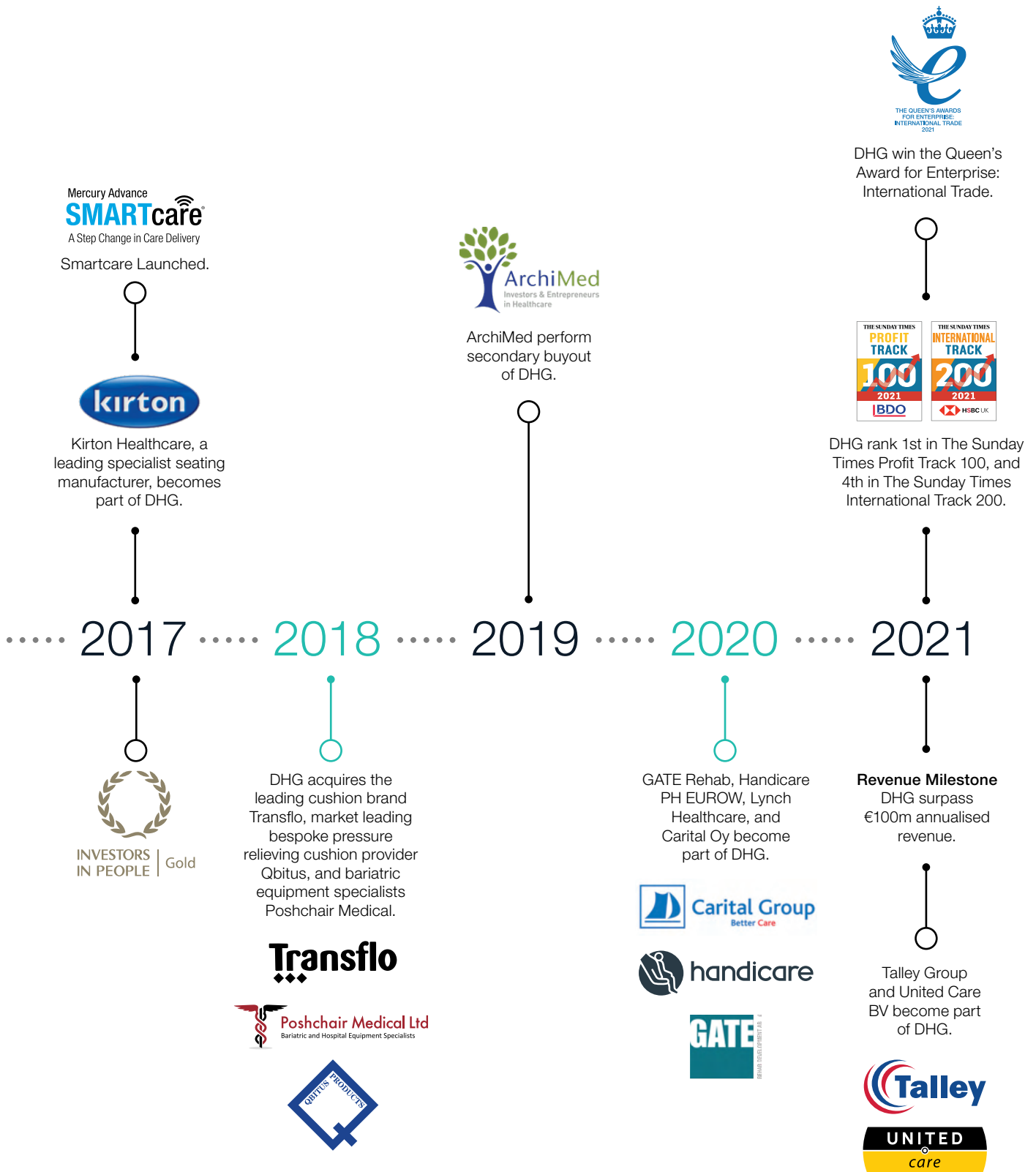


Nightingale, a leading bariatric solutions provider, becomes part of the DHG.



Intelligent Pressure Care Management® wins Queen's Award for Innovation.





Pressure Ulcer Prevention Webcast Series

Pressure Ulcer Development in Critical Care Patients: The Role of Tissue Deformation and Impact of Anti-Deformation Technology by Professor Amit Gefen

- Understanding the role of tissue deformation in pressure ulcer aetiology
- Identify the risks related to tissue deformation within the ICU/Critical Care setting
- Explore anti-deformation technology and its role in pressure ulcer management in Critical Care patients
- Consider the role of anti-deformation technology in comparison to alternating air therapy within the Critical Care setting

To request a booking for this Ethos Webcast, please email ethos@directhealthcaregroup.com



Under Pressure: The Fundamentals of Pressure Ulcer Prevention

This Ethos Webcast explores:

- How a pressure ulcer forms
- Why pressure ulcer prevention is so important
- Terminology and why it is important
- Tracking pressure ulcers
- Are pressure ulcers unavoidable?

Managing The Pressure: Performing & Utilising an Appropriate Risk Assessment

This Ethos Webcast explores:

- Risk assessment – process and factors
- Risk assessment tools
- Skin assessment as part of a risk assessment

The Prevention of Pressure Ulcers Using The aSSKINg Bundle

This Ethos Webcast explores:

- How do we prevent pressure ulcers?
- How do we assess the skin?
- Surface selection and use
- Moisture on the skin
- Categorising pressure ulcers

Taking The Pressure Off: Efficient Equipment Selection in The Community Setting

This Ethos Webcast explores:

- Identifying specific challenges surrounding equipment provision in the community setting
- Engaging patients and carers in equipment selection and use
- Evaluating care delivery

Everything But Pressure: The Role of Shear, Friction & Micro Climate in Skin Integrity

This Ethos Webcast explores:

- The effects of pressure and shear
- Envelopment and immersion
- Cell deformation
- Microclimate and the effect of moisture on the skin

Shifting The Pressure: Moving & Handling with Pressure Ulcer Prevention in Mind

This Ethos Webcast explores:

- The links between moving and handling and pressure ulcer prevention
- Selecting the right equipment to maintain healthy skin
- Working as a team to prevent patient harm

Delivering Effective Wound Management Using Negative Pressure Wound Therapy by Alison McGrath

This webcast aims to provide an introduction to effective Negative Pressure Wound Therapy (NPWT), and explores the following topics:

- Wound healing physiology
- The different wound types
- NPWT definition
- Understand NPWT mode of action
- Identify wound suitability when using NPWT
- Contraindications and precautions

To book an Ethos Webcast, please visit www.directhealthcaregroup.com/ethos-webcasts/

We can also hold Ethos Webcasts specifically for you and your team. To request a booking, please email ethos@directhealthcaregroup.com

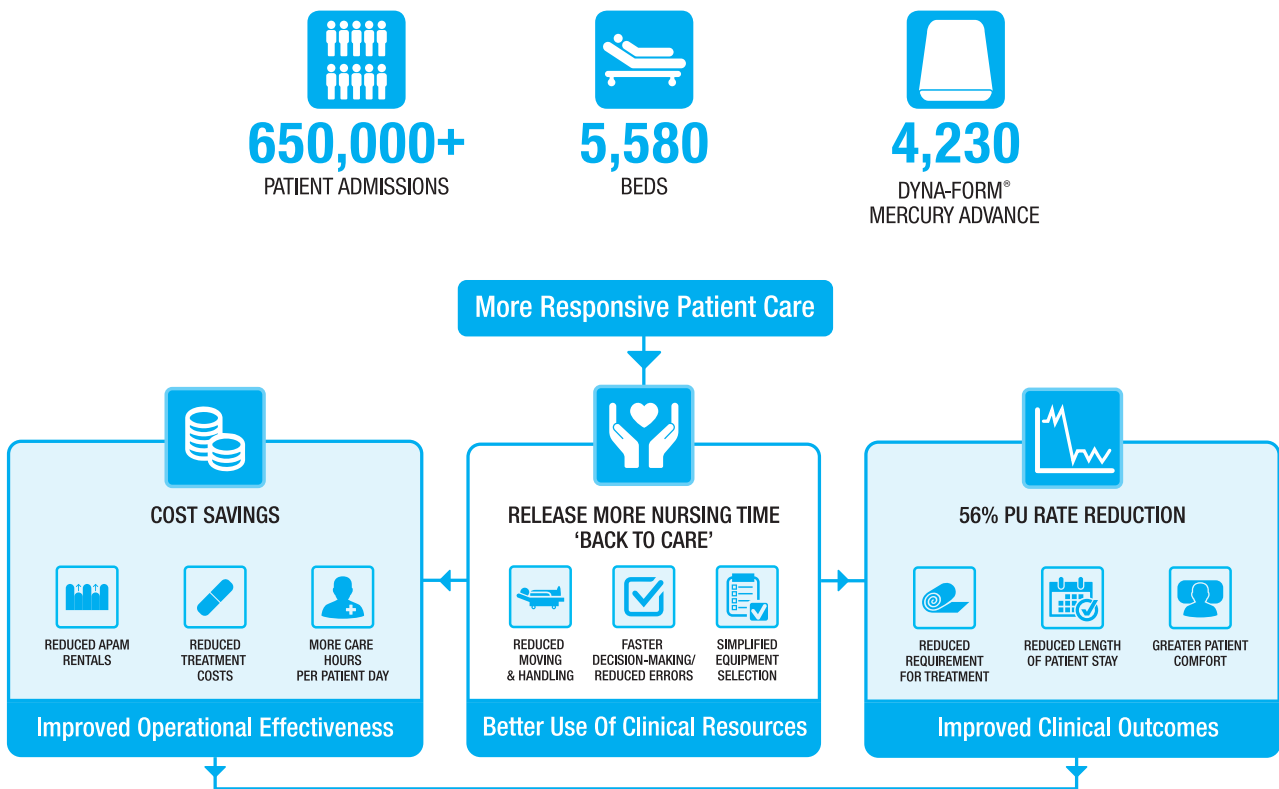


With healthcare agendas focused on achieving improved clinical outcomes and operational efficiencies, Intelligent Pressure Care Management delivers both by transforming the Pressure Ulcer Prevention care delivery model.

The Intelligent solution is not only clinically proven but designed to make a measurable difference to Pressure Ulcer Prevention and other key healthcare metrics related to efficiency savings, better use of clinical resources and average length of patient stay. Independent expert evaluations and real world evidence demonstrate the positive impact of Intelligent Pressure Care Management.

Real-world evidence from a large-scale multisite evaluation of a hybrid mattress¹

A large scale, multi-site review of hybrid implementation concludes that the powered hybrid support surface alters the process of pressure ulcer prevention care delivery, in turn delivering improved patient outcomes alongside improved operational effectiveness.



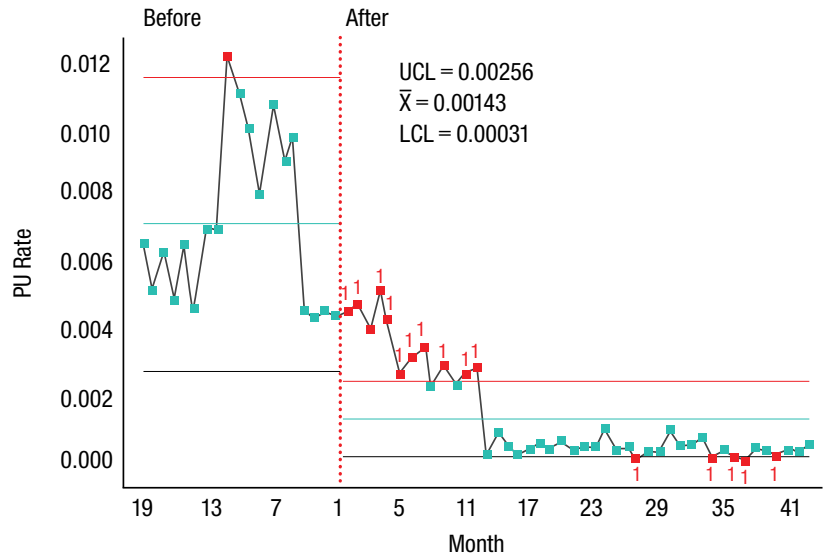
Summary of improvements achieved

“...where people are empowered to embrace available innovations it is very possible to deliver improved patient outcomes alongside improved operational effectiveness.”¹

56% Reduction in Pressure Ulcer Incidence

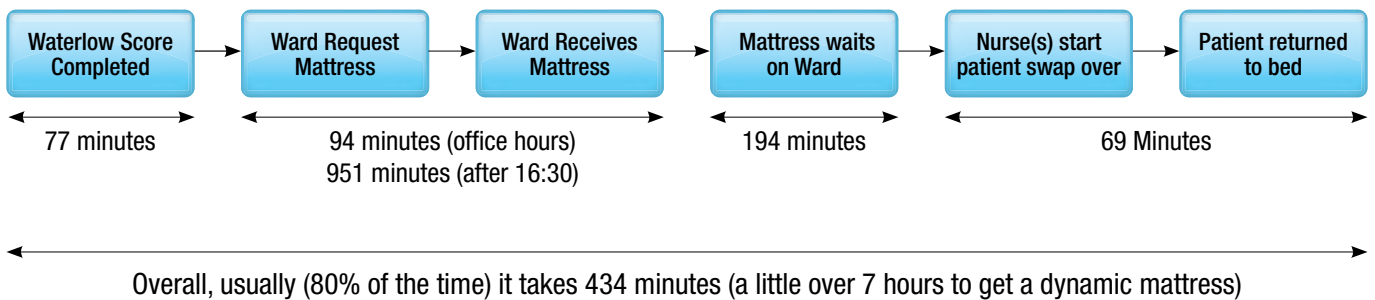
A large scale, long term evaluation examining the implementation of Intelligent Pressure Care Management concluded that the solution represents a significant step change in care delivery, with results demonstrating a 56% reduction in PU occurrence alongside significant improved operational efficiencies.

A retrospective analysis of PU data both pre- and post- hybrid implementation also showed that the reduction was sustained.

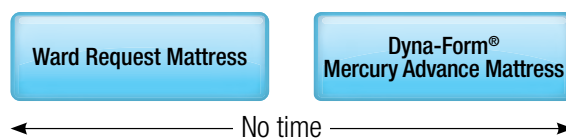


Patients on appropriate support surface up to 7 hours faster

Prior to the implementation of Intelligent Pressure Care Management the study showed that it could take up to over 7 hours to transfer patients onto a Dynamic mattress following a clinical requirement being identified.



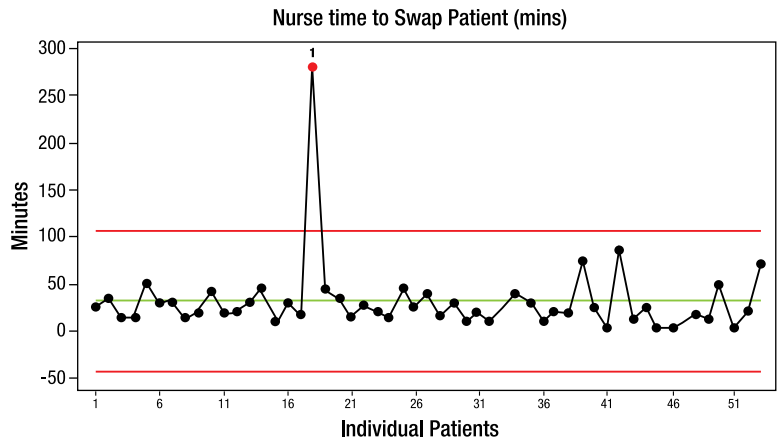
With susceptible patients at risk of developing a full-thickness pressure ulcer in just one or two hours³ the reduction of this delay could potentially prevent a proportion of hospital acquired pressure ulcers. By eliminating the requirement for patient transfer, and the various delays associated with requesting a different support surface, Intelligent Pressure Care Management reduced the measure of over 7 hours to zero.



Up to 6,500 hours of Nursing Time released 'back to care'

The time savings achieved by reducing the processes, and removing the requirements for moving and handling assistance and administration were calculated to be considerable.

Following implementation of Intelligent Pressure Care Management the extrapolated results over a 12 month period demonstrated the potential to release up to 6,500 hours of nursing time 'back to care'.



80% (most) of the time it takes 69 minutes to swap a patient to the new mattress

Up to 55% cost savings on traditional Dynamic mattress approach

Budget Impact				
Royal Wolverhampton NHS Trust				
Current Costs				5% Reduction
Cost of managing all Pressure Ulcers in the trust	Cost of managing new Pressure Ulcers in the trust	Annual nursing costs for changing mattresses	Annual decontamination costs	Application cost of new mattresses
£3,198,000	£362,000	£111,851	£0	£490,000
Potential Savings				
Reduction of all Pressure Ulcers	Reduction of new Pressure Ulcers	Nursing time costs	Decontamination costs	CBRN payment
Year 1 £160,200	Year 1 £19,000	Year 1 £114,321	Year 1 £0	Year 1 £600,000
Year 2 £155,820	Year 2 £17,000	Year 2 £111,058	Year 2 £0	Year 2 £600,000

Total Savings	
Total saving based on reduction in all PUs	Total saving based on reduction in new PUs
Year 1 £390,621	Year 1 £240,042
Year 2 £851,878	Year 2 £726,358

DHG Representatives offer free of charge Intelligent Business Case consultations using the latest health economic modelling tool and SPC analysis. Please contact our Sales Offices for more information.

Dyna-Form[®] SMARTresponse[®]

The next generation hybrid support surface

Despite ongoing improvements in pressure ulcer (PU) prevention, the clinical burden of PUs still remains high, with a 32% increase in PU incidence occurring between 2012/13 and 2017/18 and an annual cost increase of 8-9% per annum within wound care.¹ It has been suggested that one way to break these incidence plateaus is to use continuous patient monitoring in order to provide a level of on-going risk assessment² and to enable better decision making that is informed by patient needs.³

SMARTresponse[®], DHG's latest innovation, is uniquely able to support clinical choice and timely intervention on an individualised basis by automatically or remotely stepping-up patient care when a period of patient non-movement has been detected.

With the focus on clinical choice, **SMARTresponse[®]** empowers healthcare providers to achieve earlier intervention in pressure ulcer prevention, offering easy implementation for individuals at risk of developing pressure ulcers, helping to ensure best use of clinical resources to deliver more responsive patient care, improve patient outcomes and contribute to cost-savings.⁴



Auto Start

Selecting Auto Start allows the system to automatically 'step up' care when no patient movement has been detected for a period of time.



Alert Me

Alert Me sends a message directly to the care provider when no patient movement has been detected for a period of time. This provides the carer with the ability to remotely 'step up' care from anywhere.



Bed Exit

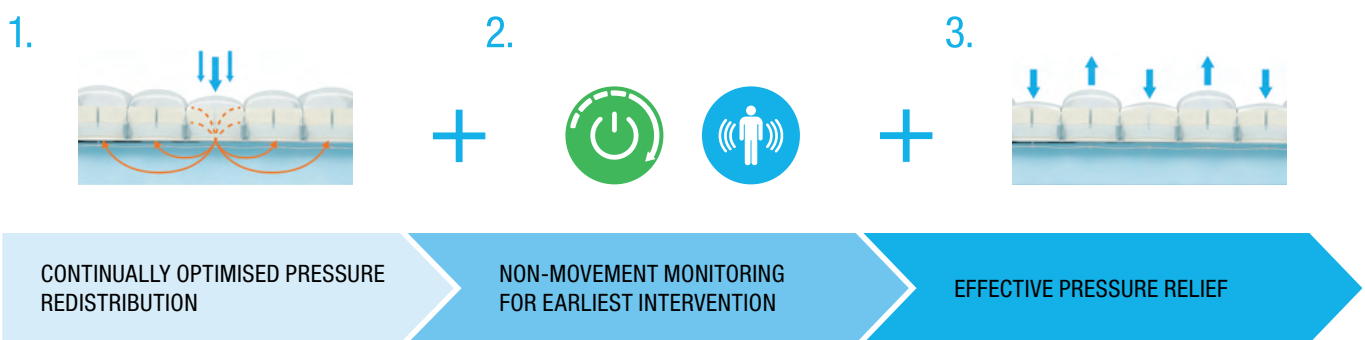
Bed Exit can be activated at any point to detect bed exit events. In the event that a Bed Exit is detected, an alert is sent directly to the care provider.



SMARTresponse® transforms the pressure ulcer prevention care delivery model, providing the next generation hybrid mattress.

Hybrid support surfaces are clinically proven to support the prevention and treatment of pressure ulcers. Representing a step change in care delivery, hybrid solutions provide a more cost-effective solution, promoting best use of resources when compared to the traditional use of standard high specification foam and alternating pressure air mattresses.

With the addition of the SMARTresponse® power unit, DHG have transformed the hybrid support surface, enabling the immediate 'step up' of patient care automatically or remotely when a period of no patient movement has been detected:



- Advanced air displacement technology continually optimises pressure redistribution in response to patient body weight and movement.
- 'Step up' care automatically after a period of patient non-movement.
- 'Step up' care remotely when notified of a period of patient non-movement.
- Control unit provides an alternating function.
- 10 minute, 2-in-1 cycle with comfort control.

EPUAP/NPIAP/PPPIA International Clinical Practice Guidelines 2019.

Recommendation 1.23: Develop and implement a risk-based prevention plan for individuals identified as being at risk of developing pressure ulcers.⁵

Recommendation 5.1: Reposition all individuals with or at risk of pressure ulcers on an individualized schedule, unless contraindicated.⁵

Recommendation 5.2: Determine repositioning frequency with consideration for the individual's level of activity, mobility and ability to independently reposition.⁵

SMARTresponse® provides bespoke and individualized pressure redistribution and pressure relief in a single support surface, and can play a role in determining patient repositioning, with consideration for the individual's level of activity, by constantly monitoring patient movement.

Technical Specifications

Product Code	MAT1620001
Risk Category	Very High Risk
Weight Limit	No minimum weight limit. 254kg max. patient weight
Warranty	2 years
Dimensions	Standard size 198cm (L) x 88cm (W) x 15cm (H). Variable sizes available
Product Weight	13.3kg mattress. 1.7kg control unit
Cycle Time	10 minutes
Voltage	220-240V, 50Hz

References

1. Guest, J., Fuller, G. W., & Vowden, P. (2020). Cohort Study Evaluating the Burden of Wounds to the UK's National Health Service in 2017/2018: Update from 2012/2013. *BMJ Open*, 10(12);e045253.
2. Brienza, D. (2020). Translating Aetiological Knowledge into Support Surface Science. EPUAP 2020 Virtual Conference Abstract.
3. Nixon, J. et al. (2019). Pressure Relieving Support Surfaces for Pressure Ulcer Prevention (PRESSURE 2): Clinical and Health Economic Results of a Randomised Controlled Trial. *EClinicalMedicine*, 14:42-52.
4. Fletcher, J., Tite, M., & Clark, M. (2016). Real-World Evidence from a Large-Scale Multisite Evaluation of a Hybrid Mattress. *Wounds UK*, 12(3):54-61.
5. European Pressure Ulcer Advisory Panel, National Pressure Injury Advisory Panel and Pan Pacific Pressure Injury Alliance. Prevention and Treatment of Pressure Ulcers/Injuries: Quick Reference Guide. Emily Haesler (Ed.). EPUAP/NPIAP/PPPIA:2019.

SERIAL NUMBER

(01)05060572015272(21)SR2107290020

FIRMWARE VERSION

0.32D-56095e1d-SB

MQTT VERSION

v1.1



Static Mode

Manual

15 Nov 2022 13:41

PREVIOUS MODE

NOTIFICATION SENT: "Bed exit detected, press here."

UPDATE REASON

UPDATED AT



Static Mode
Bed Exit Event

Automatic

15 Nov 2022 13:4



Static Mode

Manual

10 Nov 2022 10



Alert Me Monitoring
Patient Weight - 65kg to 85kg

Manual

10 Nov 2022 10

NOTIFICATION SENT: "Bed exit detected, press here."



Alert Me Monitoring
Bed Exit Event

Automatic

10 Nov 2022



Patient Movement
-2.087062 to -0.837808

Automatic

10 Nov 2022



Patient Movement
-1.225773 to 0.110507

Automatic

10 Nov 2022



Patient Movement
0.324851 to 1.221553

Automatic

10 Nov 2022



Patient Movement
-0.920922 to 0.855528

Automatic

10 Nov 2022

Dyna-Form[®] SMARTassist[™]

Providing a real-time and historic trail of control unit actions



SMARTassist[™] is DHG's latest software addition to SMARTresponse[®], combining a mobile app and desktop site that provides a user with both a real-time and historic trail of actions from any registered control unit, including:

- Patient movement
- Activation of SMARTresponse features
- Which therapy mode the control unit was placed in, and via what method, i.e. manual or automatic
- Control unit warnings
- All associated references and notes

Pressure Ulcer Classification Guide

“Localised damage to the skin and/or underlying tissue, as a result of pressure, or pressure in combination with shear. Pressure injuries/ulcers usually occur over a bony prominence but may also be related to a medical device or other object”¹

Pressure ulcers are categorised by their severity and may be limited to the superficial tissues of the epidermis and dermis or extend to deeper tissue exposing and/or involving muscle, tendon and bone.

Early detection of pressure related skin damage is essential, as it allows for appropriate intervention which can prevent progression to more severe ulceration². Therefore, the ability to accurately identify and confirm Category 1 pressure ulcers in all skin types is of significant importance for clinical staff, carers and healthcare providers.

Healthcare professionals and carers are typically taught to look for redness (erythema) as a first sign of pressure damage and whilst this is relatively simple to identify in Caucasian skin it can prove to be difficult to diagnose accurately when assessing individuals with darker skin tones. It is likely that Category 1 PUs are under-reported in individuals with dark skin tone due to failure to identify early differences in skin colour as a result of pressure related tissue injury¹.

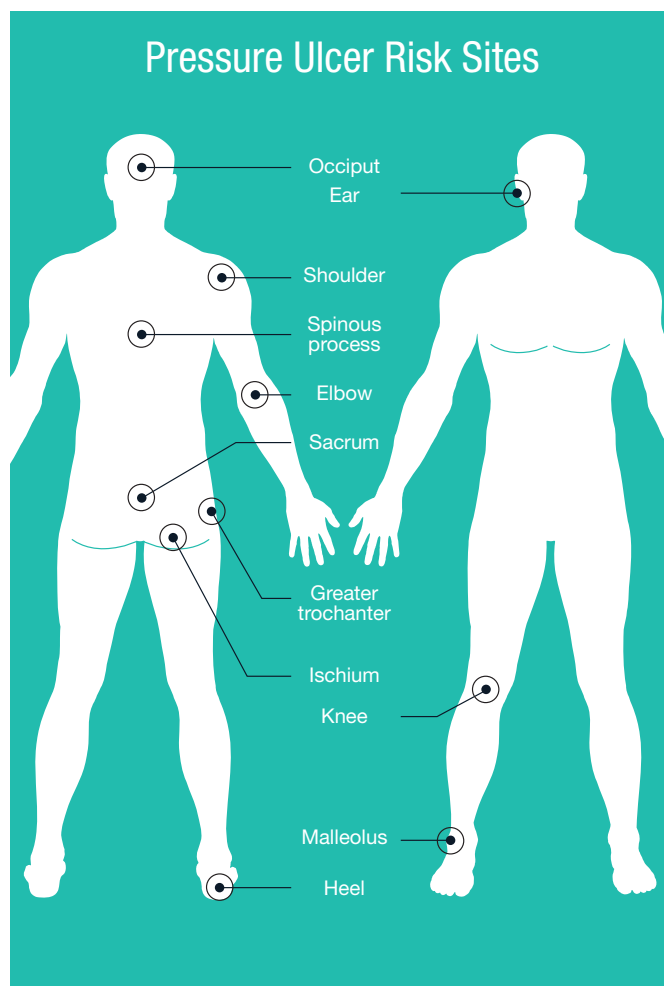
Skin pigmentation can mask the visual indication of erythema and Category 1 pressure ulcers are more likely to go undetected and deteriorate to full thickness pressure ulcers (Category 3 and 4) in darkly pigmented skin^{2,3}.

To reduce the risk of erythema (redness) and Category I pressure ulcers developing into full thickness wounds in patients with dark skin tones, it is essential for clinical staff and carers to recognise the other signs and symptoms than can be observed on the skin as early indicators of pressure related tissue injury^{4,5}.

These important additional indicators of pressure related tissue injury to the skin include;

- Purple/bluish discolouration
- A purple hue where ischaemia is present
- Localised oedema/swelling due to the inflammatory response
- Temperature change – initial warmth due to the inflammatory response which will become cooler as tissue death occurs
- Pain and discomfort
- Alteration in sensation in response to either inflammation or ischaemia
- Change in tissue consistency in relation to surrounding tissue. For example, induration (hardness) due to excessive inflammation and necrosis. May also become soft and boggy.

Whilst these additional signs and symptoms are applicable to all skin tones, they can be particularly useful when caring for patients with dark skin tones when obvious pressure-related redness on the skin can be more difficult to identify.



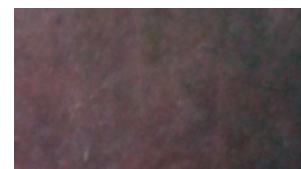
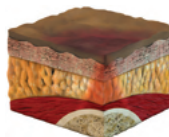
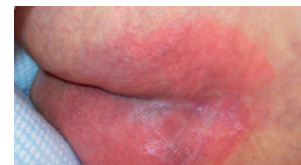
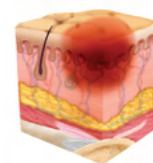
CONSIDERATION FOR CLINICAL PRACTICE

Skin should be carefully inspected for any discolouration over pressure areas. Areas of discolouration in relation to surrounding skin should be assessed more closely for temperature changes, oedema, changes in tissue consistency and pain¹.

Note: This is a guide only, signs and symptoms of pressure ulcers may present differently on different skin tones. Education is a critical factor in ensuring that all members of the clinical team can strive to prevent and treat pressure ulcers according to the best evidence available⁷.

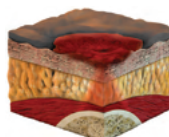
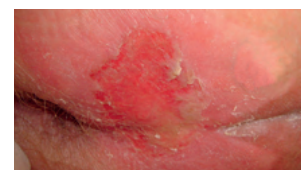
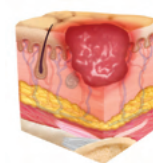
CATEGORY/STAGE 1: Non-blanchable Erythema

Intact skin with non-blanchable redness of a localized area usually over a bony prominence. Darkly pigmented skin may not have visible blanching; its colour may differ from the surrounding area. The area may be painful, firm, soft, warmer or cooler as compared to adjacent tissue. Category/Stage 1 may be difficult to detect in individuals with dark skin tones. May indicate “at risk” individuals (a heralding sign of risk).

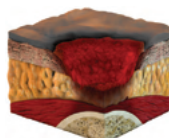
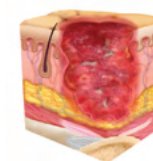
**CATEGORY/STAGE 2: Partial Thickness Skin Loss**

Partial thickness loss of dermis presenting as a shallow open ulcer with a red pink wound bed, without slough. May also present as an intact or open/ruptured serum-filled blister. Presents as a shiny or dry shallow ulcer without slough or bruising.* This Category/Stage should not be used to describe skin tears, tape burns, perineal dermatitis, maceration or excoriation.

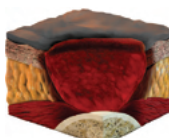
*Bruising indicates suspected deep tissue injury.

**CATEGORY/STAGE 3: Full Thickness Skin Loss**

Full thickness tissue loss. Subcutaneous fat may be visible but bone, tendon or muscle are not exposed. Slough may be present but does not obscure the depth of tissue loss. May include undermining and tunnelling. The depth of a Category/Stage 3 pressure ulcer varies by anatomical location. The bridge of the nose, ear, occiput and malleolus do not have subcutaneous tissue and Category/Stage 3 ulcers can be shallow. In contrast, areas of significant adiposity can develop extremely deep Category/Stage 3 pressure ulcers. Bone/tendon is not visible or directly palpable.

**CATEGORY/STAGE 4: Full Thickness Tissue Loss**

Full thickness tissue loss with exposed bone, tendon or muscle. Slough or eschar may be present on some parts of the wound bed. Often include undermining and tunnelling. The depth of a Category/Stage 4 pressure ulcer varies by anatomical location. The bridge of the nose, ear, occiput and malleolus do not have subcutaneous tissue and these ulcers can be shallow. Category/Stage 4 ulcers can extend into muscle and/or supporting structures (e.g., fascia, tendon or joint capsule) making osteomyelitis possible. Exposed bone/tendon is visible or directly palpable.



INTERNATIONAL NPUAP/EPUAP PRESSURE ULCER CLASSIFICATION SYSTEM. National Pressure Ulcer Advisory Panel, European Pressure Ulcer Advisory Panel, Pan Pacific Pressure Injury Alliance, Prevention and Treatment of Pressure Ulcers: Clinical Practice Guideline. 2014. Emily Haesler (Ed). Cambridge Media: Osbourne Park, WA. © NPUAP/EPUAP/PPPIA

References

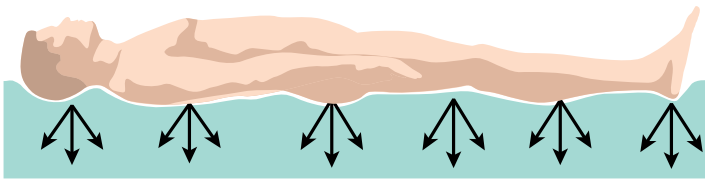
1. European Pressure Ulcer Advisory Panel, National Pressure Injury Advisory Panel, and Pan Pacific Pressure Ulcer Injury Alliance. Prevention and Treatment of Pressure Ulcers/Injuries: Clinical Practice Guideline. The international Guideline 2019.
2. Springle S, Shang L, Duckworth M. Detection of skin erythema in darkly pigmented skin using multispectral images. *Adv Skin Wound Care*. 2009; 22(4):172-9.
3. Bennet A. Report of the task force on the implications for darkly pigmented intact skin in the prediction and prevention of pressure ulcers. *Adv Wound Care*. 1995; 8(6):34-5.
4. National Pressure Ulcer Advisory Panel, European Pressure Ulcer Advisory Panel and Pan Pacific Pressure Injury Alliance. Prevention and Treatment of Pressure Ulcers: Quick reference Guide. Australia; 2014
5. Baker M. Detecting pressure damage in people with darkly pigmented skin. *Wound Essentials*. 2016;11(1):28-31.
6. Pan Pacific Pressure Injury Classification System for Dark Skin Tones. 2020. Pan Pacific Pressure Injury Alliance (PPPIA). Available online at <https://pppia.org/static/pdfs/pppia-classification-system-dark-skin-tones.pdf>. Accessed 21st September 2020.
7. MacGregor L, Calne, S, Day K. International Review: Pressure ulcer prevention: Pressure, Shear, Friction and microclimate in context. A consensus document. *Wounds International*. 2010. London.

Understanding Different Types of Pressure Area Care (PAC) Mattresses

In simplistic terms, PAC mattresses can be grouped into either 'reactive' or 'active' support surfaces

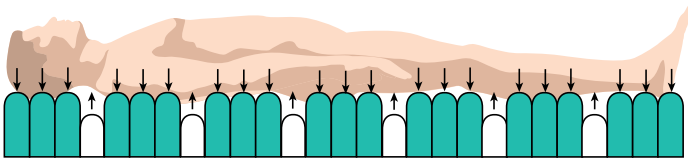
REACTIVE THERAPY (pressure reducing)

Reactive therapy includes all static (non-powered) mattresses such as foam and nonpowered hybrids. Broadly speaking 'reactive therapy' is used for lower risk patients with a degree of independent mobility. This may include patients with existing superficial pressure ulcers.

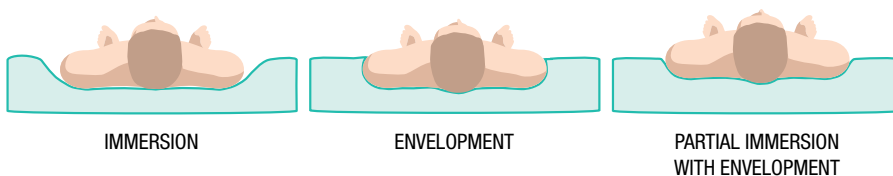


ACTIVE THERAPY (pressure relieving)

Active therapy includes all powered, alternating pressure dynamic mattresses and powered hybrids. These powered mattress systems are more likely to be targeted at higher risk patients, those with greater levels of dependency or who cannot be regularly repositioned, and/or those with existing full thickness pressure ulcers.



The degree to which a mattress reduces or relieves pressure can also depend upon the level of immersion and envelopment offered by the support surface.



STATIC MATTRESSES

Overview

Static mattresses reduce pressure across the patient/support surface interface.

Design

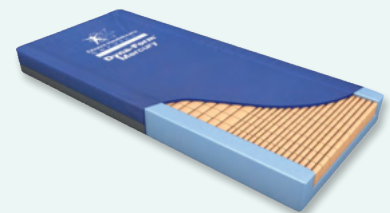
Static mattresses combine different types of foam and/or involve cuts or castellations on the foam surface. This results in support surfaces which conform to the patient's body to enhance pressure redistribution by offering partial immersion and envelopment (see previous images).

Therapy type

Static mattresses offer reactive therapy and apply a constant, unrelieved pressure to patients' skin and underlying tissues. This pressure will only be relieved when patients move independently or when they are manually repositioned.

Typical use

Patients at lower levels of pressure ulcer risk and/or those with superficial pressure ulcers.



DYNA-FORM® MERCURY

When selecting a mattress for your patient please consider:

- 1) the type of therapy the mattress offers
- 2) the clinical needs of your patient
- 3) the level of care/input the patient receives
- 4) how the mattress you have selected will meet your patient's pressure area care needs

The three main types of PAC mattress you are likely to come across are static, hybrids and dynamic.

HYBRID MATTRESSES

Overview

Hybrid mattresses typically combine both foam and air into a single support surface and are either powered or non-powered.

Design

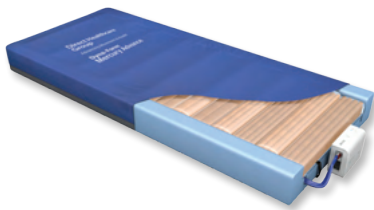
The foam may be encased within individual air cells OR it may lie above the air cells.

Therapy type

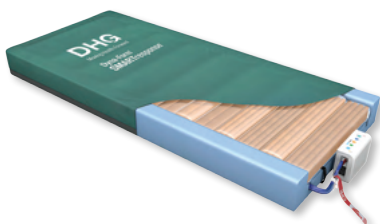
Non-powered hybrids offer reactive therapy similar to static mattresses (see left). Powered hybrids offer a degree of active therapy to patients, although the level of pressure relief is typically less than that seen with true dynamic mattresses (see right).

Typical use

Patients at varying levels of pressure ulcer risk may be nursed on hybrid mattresses, including those with existing pressure ulcers.



DYNA-FORM® MERCURY ADVANCE



DYNA-FORM® SMARTRESPONSE

DYNAMIC MATTRESSES

Overview

Dynamic mattresses require an electrically powered pump to periodically cycle air through the mattress, offering patients regular periods of pressure relief and tissue offloading.

Design

Dynamic mattresses use a pump to regularly inflate and deflate specially designed air cells within the mattress. Dynamic mattresses will be either a 1-in-2, 1-in-3 or 1-in-4 cell cycle and 'cycle' times can vary from 7 to 30 minutes. Some dynamic mattresses have specialist air cells that aid partial immersion and envelopment of patients into the support surface, further reducing the pressure applied to their skin and subcutaneous tissues.

Therapy type

Dynamic mattresses offer active therapy and are designed to periodically relieve the pressure on patients' skin.

Typical use

Dynamic mattresses are typically targeted at patients at higher risk of pressure ulcers, and are often used for patients with full thickness pressure ulcers.



QUATTRO® ACUTE



QUATTRO® PLUS

ANTI-DEFORMATION MATTRESSES

Overview

Anti-deformation mattresses utilise a pump to maintain extremely low cell pressures, offering high levels of patient immersion and envelopment to reduce deformation of tissue.

Design

Anti-Deformation mattresses equalise out low pressures within their cells to immerse and envelop the patient into the surface. This high level of immersion and envelopment reduced the level of deformation placed on the tissue. Recent pressure ulcer aetiology has shown that tissue deformation occurs within the very early minutes of pressure ulcer formation.

Therapy type

Anti-deformation mattresses offer a powered reactive therapy, and are designed to minimise the level of deformation to an individuals tissue whilst in the supine or seated position.

Typical use

Patient who are considered to be at the highest risk of pressure ulcers, i.e. those in ICU, those who have persisting pressure ulcers, those who suffer from high levels of pain or discomfort, or those who are intolerant to movement.



CARITAL® OPTIMA

The aSSKINg Framework¹

The original five-step SSKIN care bundle approach to preventing and managing pressure ulcers has been established for many years and is widely used in clinical practice², with evidence showing it can help improve clinical care³. The original SSKIN care bundle focussed on:

- Surface;
- Skin Inspection;
- Keep your patients moving;
- Incontinence/increased moisture;
- Nutrition/hydration



In 2018, the NHS Improvement Pressure Ulcer Core Curriculum document¹ introduced two important additional elements for preventing pressure ulcers. These added to the existing 5-step SSKIN care bundle with the letters:

- 'a' for assess risk and
- 'g' for giving information.

While the core SSKIN acronym remains unchanged and represents the fundamental elements of care delivery for the prevention and, when necessary, management of pressure ulcers, the two new additional elements of 'assessing risk' and 'giving information' underpin and support the successful implementation of care.

Since its release in June 2018, there has been a dedicated educational drive to raise awareness and implementation of the aSSKINg framework, which is now being adopted across a range of care settings where it forms an essential part of patient care plans.

The aSSKINg care bundle is a tool which guides and documents pressure ulcer prevention and many associated interventions aimed at reducing the risk of this often preventable patient harm.

Further information on the aSSKINg framework can be found by accessing the following website or the links below:

https://improvement.nhs.uk/documents/2921/Pressure_ulcer_core_curriculum_2.pdf

Other useful links:

<https://nhs.stopthepressure.co.uk/docs/aSSKINg-together.pdf>

<https://www.nursingtimes.net/clinical-archive/tissue-viability/pressureulcer-education-1-introducing-a-new-core-curriculum-28-10-2019/>

<https://improvement.nhs.uk/resources/Using-SSKIN-to-manage-andprevent-pressure-damage/>

References

1. NHS Improvement. Pressure ulcer core curriculum. Publication code SL 10/18. NHS Improvement, London. 2018. Available online: https://improvement.nhs.uk/documents/2921/Pressure_ulcer_core_curriculum_2.pdf accessed 1st July 2020.
2. Whitlock J. SSKIN bundle: preventing pressure damage across the health-care community. *British Journal of Community Nursing*. 2014; 18:suppl 9: s32-39.
3. McCoullough S. Adapting a SSKIN bundle for carers to aid identification of pressure damage and ulcer risks in the community. *British Journal of Community Nursing*. 2016 June; Suppl:S19 – S25.
4. National Institute for Health and Care Excellence (2014) Pressure ulcers: prevention and management of pressure ulcers. NICE clinical guideline 179. NICE, London.

ASSESS RISK

a

- Assess pressure ulcer risk using a validated tool to support clinical judgment⁴.
- Risk assessment identifies the patient's individual risk of pressure ulcers.
- Appropriate care and interventions can be implemented ensuring resources are used appropriately.

S

SKIN ASSESSMENT AND SKIN CARE

- Early inspection means early detection!
- Perform regular skin inspections.
- Show patients and carers what to look for.

S

SURFACE SELECTION AND USE

- Ensure the provision of appropriate pressure-reducing or pressure-relieving devices.
- Ensure the patient is repositioned at regular intervals to meet their individual healthcare needs.
- Consider 30° tilt to position the patient.

K

KEEP PATIENTS MOVING

- Encourage mobility and regular movement to relieve pressure over bony prominences.
- Assist patients who are unable to move independently.

I

INCONTINENCE ASSESSMENT AND CARE

- Keep skin clean and dry.
- This may include the use of barrier creams incontinence products and/or emollients.

N

NUTRITION AND HYDRATION ASSESSMENT/SUPPORT

- Assess nutritional status.
- Keep patients well hydrated.
- Implement prescribed diet/nutritional supplements.

g

GIVING INFORMATION

- Communicate effectively and provide information to patients carers and the multidisciplinary team regarding pressure ulcer prevention (i.e. repositioning equipment nutrition/hydration).

DHG work with the world's leading clinical experts to ensure our products are reliable, safe and effective at supporting healthcare providers to deliver pressure care solutions. With over 30 years' experience designing and manufacturing pressure care products, all products in the DHG Product Range are supported with robust clinical evidence.

An Example of an Equipment Selection Guide using PURPOSE-T Risk Assessment Framework

Not At Risk to At Risk	At Risk to High Risk	High to very high risk
Skin Assessment		
Skin intact / early signs of pressure damage	Category 1-2 or scarring from previous pressure ulcer	Category 3-4 / Unstageable
Mobility Assessment		
Fully Mobile	Limited mobility	Immobile
Equipment Selection Guide		
Static High Specification Foam Mattress	Hybrid Mattress System	Hybrids, Dynamics and Anti-Deformation Systems
 DYNA-FORM® MERCURY	 DYNA-FORM® MERCURY ADVANCE  DYNA-FORM® SMARTRESPONSE	 DYNA-FORM® MERCURY ADVANCE  QUATTRO® ACUTE  QUATTRO® PLUS  CARITAL® OPTIMA

*This is an illustrative example of an equipment selection guide using PRUPOSE-T risk assessment. Equipment selection should be based on a comprehensive patient risk assessment and clinical judgement.

DHG products are available in a range of different cover fabrics, all designed to protect the core of the mattress or cushion in line with Tissue Viability and Infection Control protocols, whilst ensuring optimum patient comfort.

**Dyna-Form®
Cover Fabric** **best for general use**

Suitable for use across a diverse range of healthcare settings, our standard cover fabric is a highly durable, multi-stretch, vapour permeable cover with a toughened polyurethane base. The cover properties contribute towards the infection control and tissue viability standards of a modern hospital, nursing or homecare environment.

**Dyna-Form®
Pro-Formance Fabric** **best for a long lifespan**

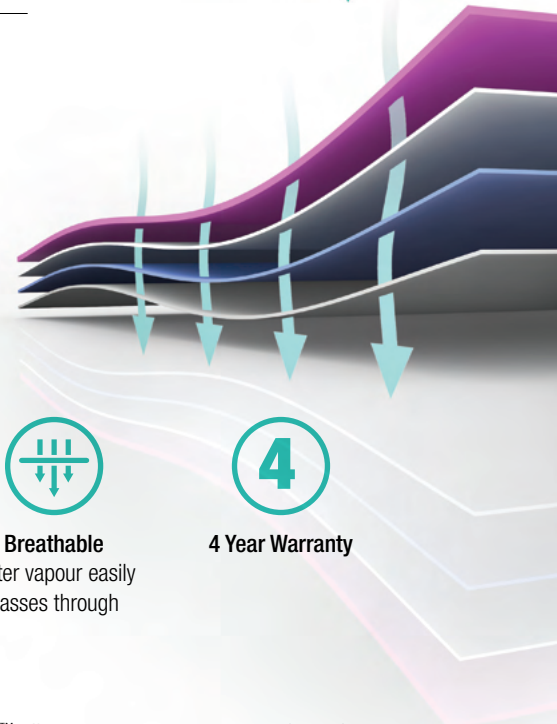
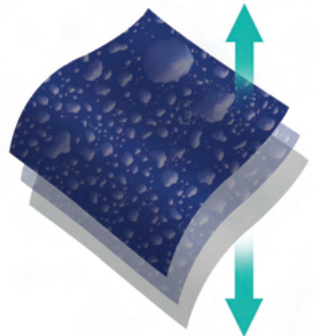
Our Dyna-Form® Pro-Formance™ Fabric is the very latest, high durability fabric, designed in conjunction with healthcare professionals and polyurethane coating specialists Dartex Coatings. Launched following an extended research and trial period Dyna-Form® Pro-Formance™ is designed with primary pressure area care delivery, coupled with extensive longevity at the very forefront of the product.

**Dyna-Form®
Vapour-Flow™** **best for microclimate**

Dyna-Form® Vapour-Flow™ is a mattress cover fabric designed to support improved microclimate management.

With a significantly higher MVTR than standard cover fabrics, Dyna-Form® Vapour-Flow™ utilises our most advanced moisture vapour transfer technologies.

Dyna-Form® Vapour-Flow™ has been designed specifically for medical mattress applications in collaboration with Dartex Coatings, world leaders in medical support surface fabrics.



Cooling Effect
50% MVTR



Microclimate
controls temperature
and humidity



**100%
Waterproof**



**100%
Waterproof**



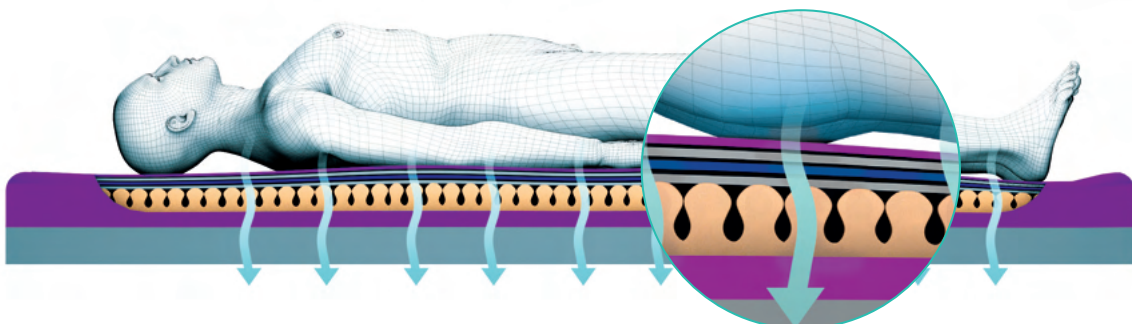
Breathable
water vapour easily
passes through



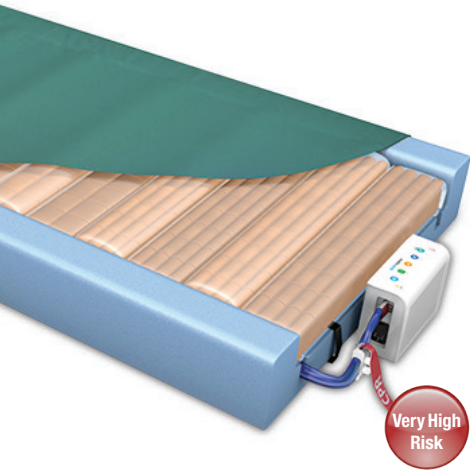
4 Year Warranty

How Does It Work?

Whilst remaining completely waterproof, the unique molecular structure of Dyna-Form® Vapour-Flow™ allows water vapour to pass through up to five times faster than a standard fabric, producing a 'cooling effect' and helping to contribute to the control of both temperature and humidity. The wipe-clean cover fabric also features 4-way stretch to help minimise the effects of shear and friction forces.



HYBRID MATTRESS RANGE



Very High Risk

Dyna-Form[®] SMARTresponse[®]

Mattress Replacement System
MAT32

Weight limit: 40 stone / 254kg capacity

Cycle Time: 10 minutes

Warranty: 2 Years



Clinical Application / PU Category

With the focus on clinical choice, SMARTresponse[®] empowers healthcare providers to achieve earlier intervention in pressure ulcer prevention, offering easy implementation for individuals at risk of developing pressure ulcers, helping to ensure best use of clinical resources to deliver more responsive patient care, improve patient outcomes and contribute to cost-savings.



Auto Start

Selecting Auto Start allows the system to automatically 'step up' care when no patient movement has been detected for a period of time.



Alert Me

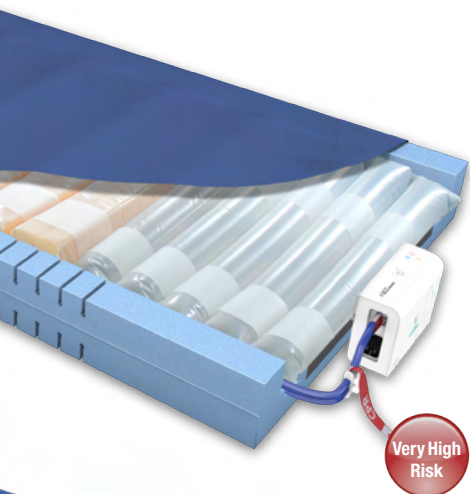
Alert Me sends a message directly to the care provider when no patient movement has been detected for a period of time. This provides the carer with the ability to remotely 'step up' care from anywhere.



Bed Exit

Bed Exit can be activated at any point to detect bed exit events. In the event that a Bed Exit is detected, an alert is sent directly to the care provider.

Dynamic Hybrid Mattress



Very High Risk

Mercury Advance SMARTcare[®]

Mattress Replacement System
MAT1610001

Weight limit: 40 stone / 254kg capacity

Cycle Time: 10 minutes

Warranty: 2 Years

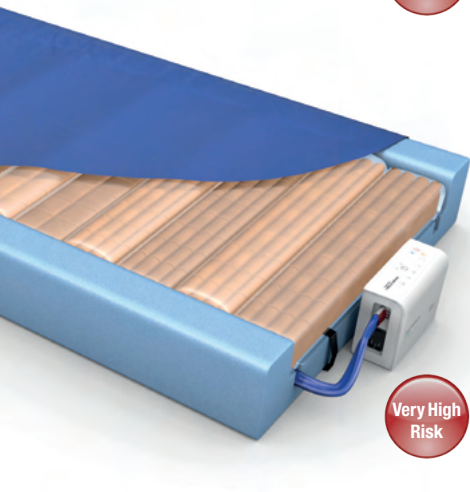


Clinical Application / PU Category

Mercury Advance Smartcare[®] is clinically proven to support the prevention and treatment of pressure ulcers. Representing a step change in care delivery, achieved by reducing the number of steps and time involved in getting patients onto the right support surface, Mercury Advance Smartcare[®] is also a more cost effective solution, promoting best use of resources.

Mercury Advance Smartcare[®] can easily be stepped up from Static to Dynamic mode, and down again when deemed clinically appropriate, with no delays, associated administration or moving and handling requirements for patient transfer.

Dynamic Hybrid Mattress



Very High Risk

Dyna-Form[®] Mercury Advance

Mattress Replacement System
MAT1210001

Weight limit: 40 stone / 254kg capacity

Cycle Time: 10 minutes

Warranty: 2 Years



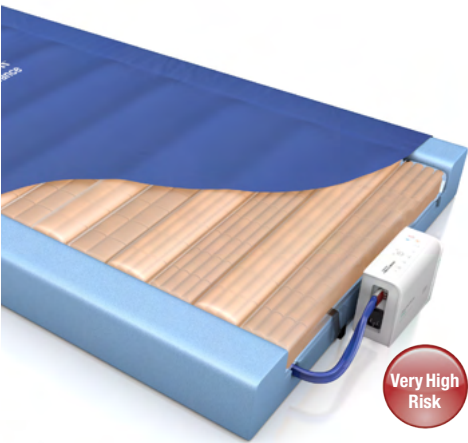
Clinical Application / PU Category

The Dyna-Form[®] Mercury Advance mattress is a dynamic replacement system, combined with the benefits of modern foam technology.

Offering high levels of patient comfort, this unique system has the facility to 'step up' to that of a dynamic mattress when clinically required. Similarly, the mattress function can be 'stepped down' as necessary.

Please note this product is also available with PU covered umbilical.

Dynamic Hybrid Mattress



Dyna-Form[®]
Mercury Advance
Bari

Mattress Replacement System
 MAT1510001

Weight limit: 60 stone / 380kg

Cycle Time: 10 minutes

Warranty: 2 Years

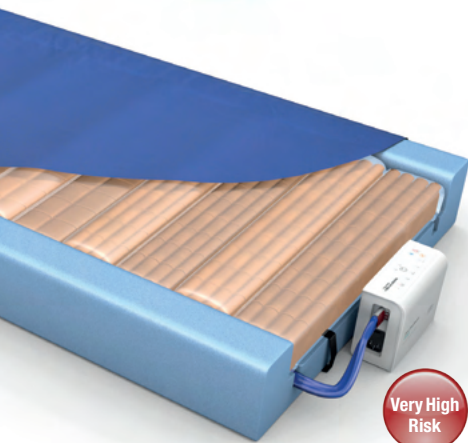


Clinical Application / PU Category

The Dyna-Form[®] Mercury Advance Bari mattress is a 'Very High Risk' dynamic replacement system, combined with the benefits of modern foam technology.

Offering high levels of patient comfort, this unique system has the facility to "step up" to that of a dynamic mattress when clinically required. Similarly, the mattress's function can be downgraded as the patient's condition improves.

Dynamic Hybrid Mattress



Dyna-Form[®]
Mercury Advance
Trolley

Mattress Replacement System
 MAT1260001

Weight limit: 40 stone / 254kg capacity

Cycle Time: 10 minutes

Warranty: 2 Years



Clinical Application / PU Category

The Dyna-Form[®] Mercury Advance Trolley Mattress has been designed especially for users considered to be that of "Very High Risk" of pressure ulcer development in potentially lengthy A&E waiting environments.

This product can be made to measure in order to fit most trolley designs and is ideal for use in busy A&E departments that have an extensive patient turnover. Offering high levels of patient comfort, this system has the facility to "step up" to that of a dynamic mattress when clinically required. Similarly, the mattress function can be downgraded as the patient's condition improves.

Dynamic Hybrid Mattress



Dyna-Form[®]
Static Air HZ

Static Mattress Replacement
 MAT0510001

Weight limit: 40 stone / 254kg

Warranty: 5 Years

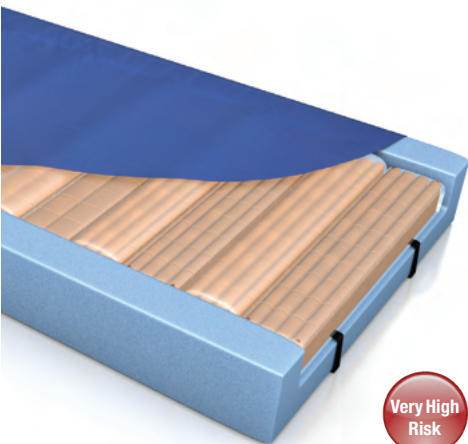


Clinical Application / PU Category

Dyna-Form[®] Static Air HZ – A New Generation of Static Support Surface, developed in conjunction with the Welsh Wound Innovation Centre. Dyna-Form[®] Static Air HZ is a mattress replacement system that combines the benefits of effective air displacement technology with the best of modern foams for a new standard of innovative pressure ulcer prevention and management.

A new and unique 'air only' Intelligent Heel Zone and specially designed U-Core effectively offload pressure on the particularly vulnerable heel area. Dyna-Form[®] Static Air HZ is specifically designed for patients considered to be at "Very High Risk" of pressure ulcer development.

Static Hybrid Mattress



Dyna-Form[®]
Mercury Static Air

Mattress Replacement System
 MAT0810001

Weight limit: 40 stone / 254kg capacity

Warranty: 2 Years



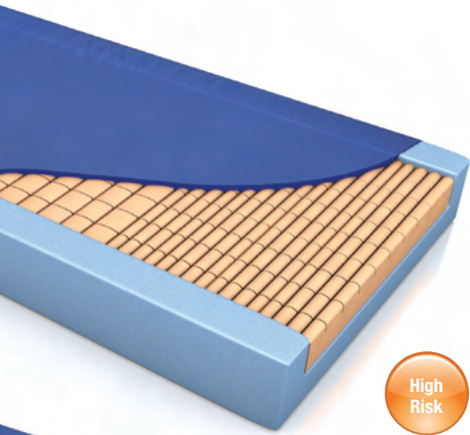
Clinical Application / PU Category

The Dyna-Form[®] Mercury Static Air mattress is specifically designed for users considered to be at "Very High Risk" of pressure ulcer development, combining the benefits of effective air displacement technology with the best of modern foams for excellent pressure reduction.

With patient compliance enhanced through the high levels of comfort offered and requiring no powered pump the system is ideal in community and palliative care settings whilst the clinical benefits and ease of use make it equally suitable in the acute ward environment. Incorporating 14 air and foam filled cells, a patented valve system allows Reactive Airflow System (RAS™) technology to displace and adjust to the patient's body weight and movement.

Static Hybrid Mattress

STATIC MATTRESS RANGE



Dyna-Form® Mercury

Static Mattress Replacement
MAT0110001

Weight limit: 40 stone / 254kg

Warranty: 8 Years Foam /
4 Years Cover

The Dyna-Form® Mercury mattress comprises of a specialist ‘castellated cut’ at the patient interface and a combination of the highest quality Combustion Modified High Resilient foam, providing excellent pressure redistribution properties, great patient comfort and product longevity.

Also available with cold foam.



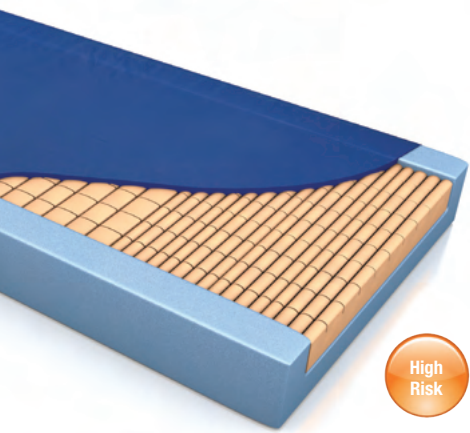
Dyna-Form® Mercury Fire Evac

Static Mattress Replacement
MAT0610001

Weight limit: 40 stone / 254kg

Warranty: 8 Years Foam /
4 Years Cover

The Dyna-Form® Mercury Fire Evacuation mattress has been designed to ensure that in the unfortunate event of a fire occurring within your hospital, then each and every patient has an evacuation system within easy reach. With an ever growing and aging population it is becoming increasingly difficult to know just how many bed bound patients there are within the hospital at any one time, and therefore just as impossible to know that there are enough fire evacuation systems available.



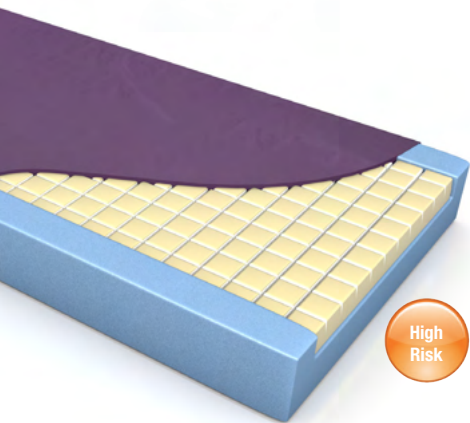
Dyna-Form® Mercury Safety 7

Static Mattress Replacement
MAT0710001

Weight limit: 40 stone / 254kg

Warranty: 8 Years Foam /
4 Years Cover

The Dyna-Form® Mercury Safety 7 mattress is a Crib 7 standard surface which is fully sealed and designed to withstand deliberate or accidental damage, making it suitable for use in environments where challenging behaviour may be an issue (e.g. secure units, bail hostels, psychiatric and mental health units). Dyna-Form® Mercury Safety 7 is designed for users considered to be at “High Risk” of pressure ulcer development, blending the finest quality Combustion Modified Ether foam (CME) to provide not only the best pressure re-distribution properties, but great patient comfort & product longevity.



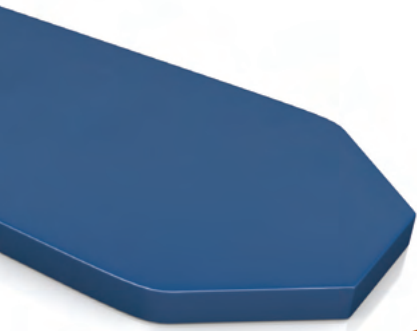
Dyna-Form® Saturn

Static Mattress Replacement
MAT0310001

Weight limit: 40 stone / 254kg

Warranty: 8 Years Foam /
4 Years Cover

The Dyna-Form® Saturn mattress is designed for users considered to be that of “High Risk” of pressure ulcer development and for patients requiring complete comfort, whilst maintaining the highest pressure care support from a static mattress. By using a blend of temperature sensitive, visco elastic foam at patient interface with the finest quality CME foam, the Dyna-Form® Saturn provides excellent pressure re-distribution properties, but with patient comfort foremost considered within its design.



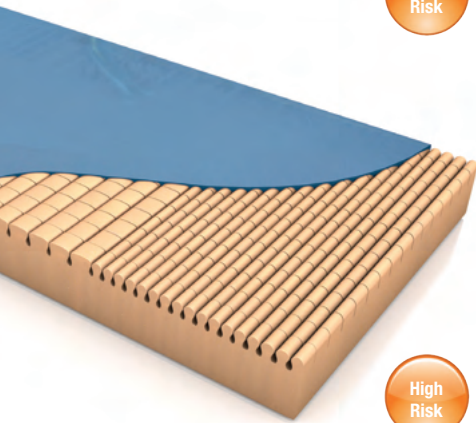
Dyna-Form[®] Trolley Mattress

Static Mattress Replacement
MAT0410080

Weight limit: 26 stone / 165kg

Warranty: 1 Year

The Dyna-Form[®] Trolley Mattress has been designed especially for users considered to be that of “High Risk” of pressure ulcer development in potentially lengthy A&E waiting environments. This product can be made to measure in order to fit most trolley designs. Dyna-Form[®] design quality comprises of a specialist “castellated cut” CME foam surface, complete with a high frequency welded, multi-stretch, vapour permeable cover and non-slip base. This product is ideal for use in busy A&E departments that have an extensive patient turnover.



Dyna-Form[®] Jupiter

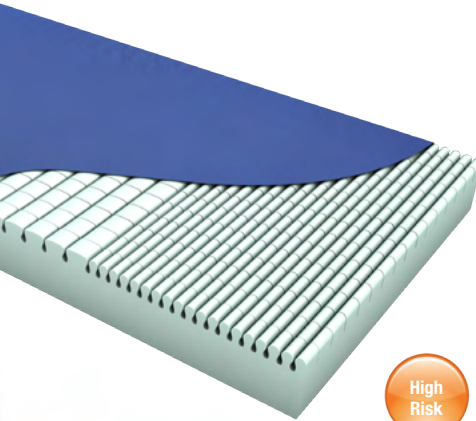
Static Mattress Replacement
MAT0210001

Weight limit: 26 Stone / 165kg

Warranty: 3 Years

The Dyna-Form[®] Jupiter mattress can be used with patients considered to be up to that of “High Risk” of pressure ulcer development. Using modern foam designs, castellated on one side to aid pressure ulcer management, whilst providing excellent patient comfort; this mattress can be used without a turning programme, aiding moving & handling procedures. Jupiter can work comfortably with any electric profiling bed frame. Its durable design uses only the very best CME foam & fabrics to provide a modern mattress complete with infection control enhancing cover.

Also Available in Pro-Formance™ Strikethrough Resistant Cover.



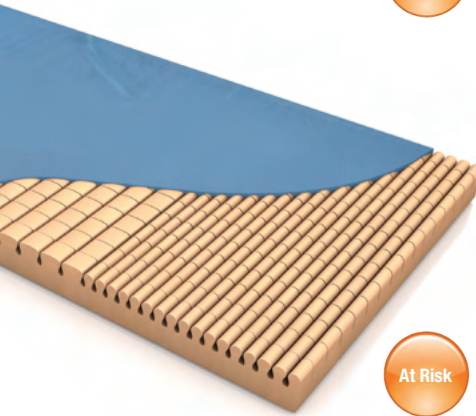
Dyna-Form[®] Community

Static Mattress Replacement
MAT2410001

Weight limit: 26 Stone / 165kg

Warranty: 3 Years

The Dyna-Form[®] Community mattress can be used with patients considered to be up to that of “High Risk” of pressure ulcer development. Using modern foam designs, castellated on one side to aid pressure ulcer management, whilst providing excellent patient comfort; this mattress can be used without a turning programme, aiding moving & handling procedures. The Dyna-Form[®] Community mattress can work comfortably with any electric profiling bed frame. Its durable design uses only the very best CME foam & fabrics to provide a modern mattress complete with infection control enhancing cover.



Dyna-Form[®] Mattress Overlay

Mattress Overlay System
MAT0410001

Weight limit: 26 Stone / 165kg

Warranty: 2 Years

The Dyna-Form[®] Mattress Overlay has been created for users considered to be “At Risk” of pressure ulcer development. To be used in conjunction with any standard mattress, Dyna-Form[®] design quality comprises of a specialist “castellated cut” CME foam surface, complete with a sewn multi-stretch, vapour permeable cover and non-slip base. This product is ideal for use in the homecare environment.

DYNAMIC MATTRESS RANGE



Quattro® Plus

Mattress Replacement System

QPS02C001

Weight limit: 31 stone/ 200kg

Cycle time: 16 minutes

Warranty: 2 years



Clinical Application / PU Category

1-in-4 alternating therapy mattress that supports 75% of the patient's body at all times, on groups of three inflated cells. TISSUEgard™ enables the partial immersion and envelopment of the patient into the support surface, and Ortho-Differential Support provides firmer outer edges of the mattress to facilitate patient transfers.



Quattro® Acute

Mattress Replacement System

QAS02C001

Weight limit: 39 stone/ 250kg

Cycle time: 16 minutes

Warranty: 2 years



Clinical Application / PU Category

1-in-4 therapy with continuous low pressure to provide pressure ulcer prevention and treatment in the most dependent of patients. Deep Cell Therapy™ allows the cells to run at lower internal pressures, minimising the pressure applied to the patient's skin and subcutaneous tissues during the cycle. TISSUEgard™ enables the partial immersion and envelopment of the patient into the support surface, and Ortho-Differential Support provides firmer outer edges of the mattress to facilitate patient transfers.

ANTI-DEFORMATION MATTRESS RANGE



Carital® Optima

Mattress Replacement System

MAT3010001

Weight limit: 47 stone/ 300kg

Warranty: 3 years

Carital® Bario

MAT4010007

Weight limit: 55-62 stone / 350-400kg

Warranty: 3 years

Carital® NeoICU

MAT5010001

Weight limit: 0-6kg

Warranty: 3 years



Clinical Application / PU Category

The Carital® Optima is a dynamic, anti-deformation mattress replacement system. Offering high levels of patient comfort, the mattress utilises continuous low pressure to provide pressure redistribution through high levels of immersion and envelopment. The Carital® Optima's air cell structured minimum pressure mattress maximises the contact area, whilst minimising the contact pressure and tissue deformation. Automatically adjusting to the user, the Carital® Optima is for patient groups that cannot tolerate movement, but are still at Very High Risk of pressure ulcer development.

Also available as Carital® Bario and Carital® Neo



CUSHION RANGE

Dyna-Form[®] Mercury Advance Alternating Cushion

Product Code
CUS1210001

Weight limit: No minimum weight limit.
Product evaluated to 24 stone / 152Kg
capacity

Cycle Time: 10 minutes

Warranty: 2 Years

1 2 3 4
Clinical Application / PU Category

The Dyna-Form[®] Mercury Advance Alternating Cushion is a dynamic replacement seating system, combined with the benefits of modern foam technology. It is specifically designed for patients considered to be at "Very High Risk" of pressure ulcer development.

Offering high levels of patient comfort, this unique system has the facility to "step up" to that of a dynamic cushion when clinically required. Similarly, the cushion function can be 'stepped down' as the patient's condition improves. A higher maximum weight capacity, up to 24 stone / 152kg, allows the product to meet the challenges of heavier patients.



Very High Risk

Dyna-Tek[®] Intelligent Air

Product Code
CUS0810012

Weight limit: 24 stone / 152Kg

Warranty: 2 Years

1 2 3 4
Clinical Application / PU Category

The Dyna-Tek[®] Intelligent Air cushion sets a brand new standard in innovative wheelchair seating, delivering superior 'bespoke' pressure redistribution without the need for any set up or re-pumping air lost over time.

Dyna-Tek[®] Intelligent Air incorporates Reactive Airflow technology, a system of air and foam-filled cells with a patented valve system designed to displace and adjust air in response to user body weight and movement.

Also available as a low profile cushion.



Very High Risk

Dyna-Flex[®] Cushion

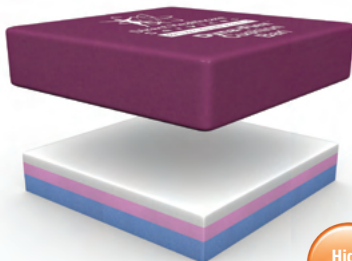
Product Code
CUS0410001

Weight limit: 24 stone / 152kg

Warranty: 2 Years

High Risk

The Dyna-Flex[®] Cushion incorporates the most exclusive combination of visco elastic & foam technology, providing outstanding pressure redistribution and superior patient comfort. The temperature sensitive memory foam softens at patient interface, thus giving even weight distribution, whilst the CMHR underside prevents the foam from bottoming out. Complete with a well designed cover and non-slip base, this product is ideal for use in all hospital, nursing or homecare environments.



Dyna-Tek[®] Superior

Product Code
CUS0210001

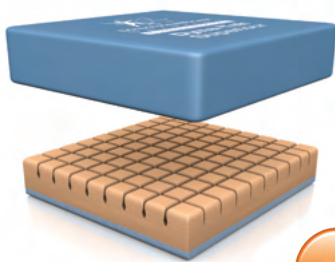
Weight limit: 18 stone / 114kg

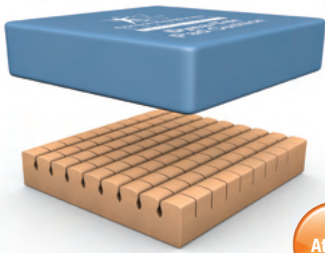
Warranty: 2 Years

At Risk

The Dyna-Tek[®] Superior Cushion design comprises of a specialist 'castellated cut' foam surface, ensuring the reduction of heat & moisture build up, whilst achieving maximum pressure redistribution.

A base layer of high density blue foam prevents patient bottoming whilst enhancing product longevity. Complete with a high frequency welded cover and non slip base, this product is ideal for use in the hospital, nursing or homecare environment.





Dyna-Tek® Pad Cushion

Product Code
CUS0110001
Weight limit: 20 stone / 127kg
Warranty: 2 Years Cover /
4 Years Foam

The Dyna-Tek® Pad Cushion has been created for users considered to be “At Risk” of pressure ulcer development. Dyna-Tek® Pad Cushion’s design quality comprises of a specialist “castellated cut” CME foam surface, ensuring the reduction of heat & moisture build up whilst achieving maximum pressure re-distribution. Complete with a sewn, multi-stretch, vapour permeable cover and non – slip base, this economical product is ideal for use in a wheelchair, hospital or homecare environment.



Transflo

Product Code
Standard: CUS0910000
Leisure: CUS0920000
Heavy Duty: CUS0930000
Weight limit:
Leisure: 22 stone/140 kg
Standard: 28 stone/178 kg
Heavy Duty: 32 stone/ 203kg
Warranty: 2 Years

The Transflo Cushion has been innovatively designed using a combination of high density foam and a unique silicone gel ‘floatation’ system. Incorporating two fluid-filled, vapour-permeable, multi-stretch sacs that are encased within a supportive, heavy-duty foam surround; the fluid is able to move between compartments as the cushion contours to the body’s shape and position, redistributing pressure over the widest surface area possible.

For the full range of sizes available for each cushion please refer to the DHG Cushion Size Chart, available to download from www.dhg-healthcare.com

POSITIONING ACCESSORIES



Dyna-Tek® Positioning Products

Positioning Product System
1. POS0110001 (36 pairs per carton)
2. POS0210001 (12 pairs per carton)

The Dyna-Tek® Heel Boot and Foot Protector are simple-to-use solutions that can help reduce the risk of pressure ulcers developing on the vulnerable heel area. Suitable for patients evaluated to be at “High Risk” of developing pressure damage, the Dyna-Tek Heel Boot and Foot Protector has been designed to offer patients comfortable and effective pressure redistribution.



Dyna-Tek® Wedge

Product Code
POS0310001

The Dyna-Tek® Wedge provides knee support without the aid of an electric profiling bed. The foam wedge prevents the patient from slipping down the bed, whilst reducing shear & friction forces on the ankles and vulnerable heel area, therefore providing improved pressure redistribution.



Lejrelet Tube 125

Product code
5000000

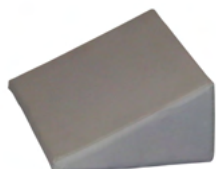
This bolstering cushion is 125 cm long, making it ideal for placing in front of the chest or in the back to create a comfortable and relaxing position. It can also be used to help support clients who cannot hold themselves upright in the side-lying position. This positioning cushion can be used for both children and adults, but if a longer support cushion is needed, is a great alternative with the same unique effects.



Lejrelet Tube 250

Product code
5000000

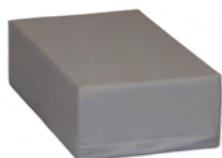
This full-body positioning bolster is ideal for creating comfortable and pressure relieving positions for clients or patients in bed. The cylinder-shaped bolstering cushion is 250 cm long, which means that it can support the body from head to toe all at once. Unlike similar body pillows, Tube 250 is filled with pressure-relieving foam granulate, which is mouldable and provides stability and comfort. This means that the body cushion is suitable for creating comfortable side-lying positions, 30-degree positions and other pressure relieving positions adapted to the client's needs. The foam filling and multi-stretch cover provide superior pressure relieving, making this positioning aid ideal for preventing and treating pressure ulcers.



Lejrelet Wedge

Product code
5000002

The wedge cushion is designed based on the anatomy of the human chest. This makes the support cushion particularly suited for placing in front of the client's chest or at their back. The wedge cushion combines two types of foam, to provide firmness and stability to, while also being pressure relieving.



Lejrelet Pad High

Product code
5000003

This pressure-relieving positioning cushion is 15 cm high ensuring a neutral position of a client's hip and pelvis when one leg is placed on the pillow in the side-lying position. This eliminates any painful twists in the lower back, which are otherwise common in this position. The positioning cushion combines two types of foam to create a firm core that ensures stability, with the pressure-relieving surface. A multi-stretch cover allows the foam optimum working conditions and is vapour permeable and water-resistant, which means that the cushion does not absorb liquids.



Lejrelet Pad Low

Product code
5000004

Pad Low is a lightweight and soft support cushion that can be shaped and moulded to suit many different situations.

The positioning cushion is ideal to combine with larger positioning cushions to give that little bit of extra support. The cushion's structure makes it possible to roll up or fold the cushion to suit the individual situation. For instance, roll it up and place it under the neck or use it as an abduction wedge. It is also possible to use the cushion as is. For instance, place it under the heels or under the elbow to relieve pressure points.

When Pad Low is used for positioning patients or clients in the side-lying position it is useful to place it between the knees as an abduction cushion, or between the feet to prevent touching of any bone protrusions.



Lejrelet Oval

Product code
5000009

LEJRELET Oval is one of the smallest positioning pillows on the market, which makes it ideal for providing that small, extra support that you often need when using larger positioning cushions. For instance, this might be as a lumbar support cushion, a knee abduction cushion or to support a paretic hand. This support pillow is filled with pressure-relieving foam granulate, which makes it possible to mould the cushion, for instance, to create a doughnut shape. This is particularly useful to relieve pressure on the ears, elbows, or hands.

Notes



Moving Health Forward

PRESSURE ULCER PREVENTION

SAFE MOVING & HANDLING

SPECIALIST THERAPIES

BATHROOM SAFETY

SPECIALIST SEATING

RENTAL & SERVICE SOLUTIONS



DHG
Withey Court, Western Industrial Estate
Caerphilly, United Kingdom
CF83 1BF

T: +44 (0) 845 459 9831
F: +44 (0) 845 459 9832
E: info@directhealthcaregroup.com

All products are manufactured to standards:



Australian Government
Department of Health
Therapeutic Goods Administration

LIT-00026 Issue 10
Date: April 2023

DHG-HEALTHCARE.COM